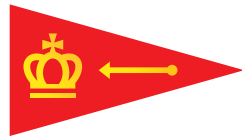



# RDYC



**ROYAL DART YACHT CLUB  
SAILING PROGRAMME 2026**



# From bow to stern, marine services delivered by a team that truly cares.

Engineering · Electrical · Shipwrights · Boatyard · Parts · Berthing

Kingswear: 01803 752 242  
service@darthaven.co.uk

Plymouth: 01752 226 143  
service@darthavenservices.co.uk

**DARTHAVEN**  
**MARINA**



   **DARTHAVEN.CO.UK**

# ROYAL DART YACHT CLUB SAILING PROGRAMME 2026

**Sailing on the River Dart** is thriving contrary to many national trends with a huge range of activities to suit both competitive and the more relaxed sailors.

**Changes to our Racing Programme:** Extensive Corinthian and Pursuit Races occur on almost every Wednesday and Saturday throughout the season, continuing into the late Autumn for the hardy. There are changes to river racing for safety and a Gate on some of our courses.

**Charity Races** are a new introduction to the programme, details to follow.

**Our RYA Accredited Junior Sailing Programme** brings the joys of sailing to a new generation and remains ever popular with children aged 8-16 yrs. The team also run Junior Sailing Week, and Schools Weeks.

**Our Cruising Group** runs a programme sailing to a huge variety of destinations in company.

**Ladies afloat** continues after over 20 years to encourage the development of independent skills with enthusiasm and commitments by members, not to mention tea and cakes!

**Boys in Boats** caters for those with boats to sail them more, and non-owners to sail as well. Our cruise this year will probably be to the further reaches of the SW Coast.

**Friday Evening Dinghy Sailing** is a family fun event in our RS Quest dinghies open to all members. Dates in June and July to be confirmed.

**The Classic Channel Regatta** - a spectacle in early July, starting in Dartmouth.

**Dartmouth Royal Regatta Sailing Week** - the year's highlight event in August.

**All groups use WhatsApp for communication.** For full details and to be added to the contacts see the relevant pages in this programme.

---

RDYC Office 01803 752496

office @royaldart.co.uk

RDYC Bar 01803 752272

Rear Commodore Sailing 07976 687921

Group Coordinators see group pages

## Racing Committee

E-mail for all racing@royaldart.co.uk

Mike Mackie 07740 022602

John Milsom via office

Norman Doidge 07968 375528

David Goulden (IRC Ratings) via office

## SAFETY CONTACTS

Coastguard VHF 16 or 999 Falmouth 01326 317 575 Solent 02 392 552 100

Ambulance 999 NHS Direct for advice 111

Race officer VHF Ch 37 (M1) Class 1 may be on Ch 72 ●

Dart Harbour VHF Ch 11 07968 839846

Darhaven Marina VHF Ch 80 (for emergency lift) 07887 726101

---

## Royal Dart Yacht Club,

Priory St, Kingswear, Dartmouth, TQ6 0AB

01803 752496 www.royaldart.co.uk



---

**Cover picture: Valhalla by Ingrid Abery Photography**, reproduced with permission and our thanks. We are extremely grateful to all our advertisers and sponsors. Please support them with your custom.



# Dolphin Boatyard

DARTSIDE QUAY



- LIFTING, STORAGE YARD & BERTHING AT OUR MARINA
- WIDE RANGE OF ON-SITE MAINTENANCE CONTRACTORS
- COMMERCIAL UNITS & CONTAINERS AVAILABLE
- ACCESSIBLE 365 DAYS A YEAR, INCLUDING OUR SLIPWAY
- CREEKSIDE RESTAURANT, INDEPENDANT SHOPS & CIDER PRESS
- ON-SITE HOLIDAY COTTAGES OVERLOOKING THE CREEK

65T Travelift & 20T Slipway hoist

60 Berth marina & amenities

The Creek on-site restaurant & bar

Holiday cottages for all the family



[ahoy@dolphinboatyard.co.uk](mailto:ahoy@dolphinboatyard.co.uk)

01803 842424

[www.dolphinboatyard.co.uk](http://www.dolphinboatyard.co.uk)

Dolphin Boatyard Limited,  
Dartside Quay, Galmpton, TQ50EH



# WEDNESDAY EVENING RACING

Date	Event	Start	Race Officer	HW DM BST/Ht
<b>Start Up Series</b>				
08 Apr	Start Up Race 1	1815	Jiggy	22:25/4.1
15 Apr	Start Up Race 2	1830	Bandit	17:47/4.4
22 Apr	Start Up Race 3	1830	Stren	22:36/4.4
<b>The 'Dolphin Boatyard' Race Series 1</b>				
29 Apr	1st Series Race 1	1830	Finale	17:52/4.5
06 May	1st Series Race 2	1830	Moondance/Offroad	21:32/4.3
13 May	1st Series Race 3	1830	Exocet	16:09/4.1
20 May	1st Series Race 4	1830	Free spirit (Elan)	21:48/4.7
27 May	1st Series Race 5	1830	Jiggy	16:23/4.1
03 Jun	1st Series Race 6	1830	Just Magic	20:47/4.5
<b>The 'Darthaven Marina' Series 2</b>				
10 Jun	2nd Series Race 1 - Ashton Kettle Race	1830	Stren	14:07/3.9
17 Jun	2nd Series Race 2	1830	Hendrika/Mimosa	20:54/5.0
24 Jun	2nd Series Race 3	1830	Bandit	13:33/3.8
01 Jul	2nd Series Race 4 - RDYST charity	1830	Nikita	20:03/4.6
08 Jul	2nd Series Race 5	1830	Olivia	12:11/4.0
15 Jul	2nd Series Race 6	1830	Jubilant	19:56/5.0
<b>Series 3</b>				
22 Jul	3rd Series Race 1	1830	Leon	12:26/3.9
29 Jul	3rd Series Race 2	1830	Blue Orca/Squiffy	19:08/4.6
05 Aug	3rd Series Race 3	1830	Dreadnought	11:01/4.2
12 Aug	3rd Series Race 4	1830	Yes Mlady/TBC	18:52/4.9
19 Aug	3rd Series Race 5	1830	Ruby Soho	23:00/4.1
26 Aug	No Race – Dartmouth Regatta			
02 Sep	3rd Series Race 6	1830	Ruby Soho	22:15/4.5
<b>The Twilight Mini Series</b>				
09 Sep	Twilight Race 1	18:15	Finale	17:48/4.8
16 Sep	Twilight Race 2	18:00	Exocet	21:54/4.4

## Notes:

**Tide times** Dartmouth, BST

**Warning Signal** 5 minutes before advertised Start Time

**Start Times** Class 3 (Squib OD) +00 mins, Class 2 +05 mins, Class 3 +10 mins.

**Note earlier Start Times** on April 08, September 09 and 16.

# WEEKEND RACING

Date	Day	Event	Organising Club and Race Series	Start	HW BST Dartmouth
19 Apr	Sun	Smugglers Run TADCCS 1	RTYC		08:18/4.9
25 Apr	Sat	RDYC Bay race	Day Race Series R1	11:00	13:59/3.6
10 May	Sun	Gallon of Rum TADCCS R2	Coastal R1, Day R2	11:00	12:30/3.5
23 May	Sat	RDYST Charity Race and Party*		14:15	12:24/3.9
06 Jun	Sat	Dart-Yealm TADCCS R3	Coastal R2	10:00	10:24/3.9
07 Jun	Sun	Yealm -Dart	Coastal R3	10:00	11:08/3.8
12-14 Jul	Falmouth Classics				
13 Jun	RORC Morgan Cup arrives in Dartmouth				
04 Jul	Sat	B'xham-Salcombe	Brixham YC		10:04/4.6
05 Jul	Sun	Salcombe-Dart TADCCS R4	Brixham YC		10:42/4.5
7-16 Jul	Sat	Classic Channel Regatta & YC Classique See CCR Website			
11 Jul	Sat	Salcombe & Back	Coastal R4, Day R3	11:00	15:54/4.1
18 Jul	Sat	Torquay-Salcombe	RTYC		
19 Jul	Sun	Salcombe-Torq'y TADCCS 5	RTYC		10:42/4.5
25-29 Jul	Sat	JOG Week	Racing for JOG hosted by RDYC		
01 Aug	Sat	Brixham and back	Coastal R5, Day R4,	11:00	08:49/4.4
08 Aug	Sat	Mike Moody Memorial R for Parkinsons		14:15	14:11/3.9
22 Aug	Sat	Torbay Royal Regatta & SW IRC Championship			13:21/3.6
26 Aug - 30 Aug	Dartmouth Royal Regatta Sailing Week, OA is JRSC				
4 Sep	Fri	Exe Bell Buoy Race TADCCS 6	Brixham YC		10:23/4.9
5 Sep	Sat	BYC Champagne challenge Exmouth-Brixham "Fun Race"			11:28/3.9
12-Sep	Sat	Hallsands Bay Race	Day R5	11:00	07:50/4.9

## Colour Key

Coastal/Day series	RDYC Special Events	TADCCS Races	External Events	Charity Races - details to follow
--------------------	---------------------	--------------	-----------------	-----------------------------------

**Warning Signal** 5 minutes before advertised Start Time.

**Organising Authority (OA)** is RDYC unless otherwise listed. RTYC and BYC NoR and Sis on their websites.

**Special Events** have separate NoR and Sis. See royaldart.co.uk

**Series:** Torbay and Dart CCS 6 Races, Coastal Series 5 Races, Day Series 5 Races,

# PURSUIT RACING

Pursuit Individual Start Times via WhatsApp.

Dates Shaded Grey no IRC Pursuit Class racing as IRC Day Race on same day.

Date	Saturday Corinthian/IRC	Start	Date	Wednesday Corinthian	Start
All Saturdays Corinthian and IRC			08 Apr	Wed S1 R1	14:15
11 Apr	Summer R1	14:15	15 Apr	Wed S1 R2	14:15
18 Apr	Summer R2	14:15	22 Apr	Wed S1 R3	14:15
25 Apr	Summer R3	14:15	29 Apr	Wed S1 R4	14:15
02 May	Summer R4	14:15	6 May	Wed S1 R5	14:15
09 May	Summer R5	14:15	13 May	Wed S1 R6	17:30
16 May	Summer R6	14:15	20 May	Wed S1 R7	17:30
23 May	RDYST Race R7	14:15	27 May	Wed S1 R8	17:30
30 May	Summer R8	14:15	03 Jun	Wed S2 R1	17:30
07 Jun	Summer R9	14:15	10 Jun	Wed S2 R2	17:30
13 Jun	Summer R10	14:15	17 Jun	Wed S2 R3	17:30
20 Jun	Summer R11	14:15	24 Jun	Wed S2 R4	17:30
27 Jun	Summer R12	14:15	01 Jul	Wed S2 R5	17:30
04 Jul	Summer R13	14:15	08 Jul	Wed S2 R6	17:30
11 Jul	Summer R14	14:15	15 Jul	Wed S2 R7	17:30
18 Jul	Summer R15	14:15	22 Jul	Wed S2 R8	17:30
25 Jul	Summer R16	14:15	29 Jul	Wed S3 R9	17:30
01 Aug	Summer R17	14:15	05 Aug	Wed S2 R10	17:30
08 Aug	Mike Moody Charity Race for PD	14:15	12 Aug	Wed S2 R11	17:30
15 Aug	Summer R18	14:15	19 Aug	Wed S2 R12	17:30
22 Aug	Autumn 1	14:15	26 Aug	Regatta Passage Races	
29 Aug	Dartmouth Royal Regatta		02 Sep	Wed S3 R1	14:15
05 Sep	Autumn R2	14:15	09 Sep	Wed S3 R2	14:15
12 Sep	Autumn R3	14:15	16 Sep	Wed S3 R3	14:15
26 Sep	Autumn R4	14:15	23-Sep	Wed S3 R4	14:15
03 Oct	Autumn R5	14:15	30-Sep	Wed S3 R5	14:15
10 Oct	Autumn R6	14:15	07-Oct	Wed S3 R6	14:15
17 Oct	Autumn R7	14:15	14-Oct	Wed S3 R7	14:15
24 Oct	Autumn R8	14:15	21-Oct	Wed S3 R8	13:15

## Wednesday and Saturday Frostbite Series Pursuit Races.

Every Saturday 31 Oct to 19 Dec

Every Wednesday 28 Oct to 23 Dec.

Individual Start Times via WhatsApp from 13:15.



All Refit, Maintenance & Repairs | Insurance Repairs  
Coatings Above & Below the Waterline  
Keels & Rudders | Bespoke Stainless Steel Work  
Skin Fittings and much more

*Highly experienced in the construction and  
repair of all types of GRP and composite  
structures & mouldings*



Dolphin Boatyard, Galmpton, TQ5 0EH | **Tel:** 01803 867 474 | **Mob:** 07779 022708  
**Email:** dave@dartsideboatworks.co.uk | **Web:** dartsideboatworks.co.uk



**For radio checks,  
and local weather  
info, call us  
on Channel**

**65**

10am - 4pm (winter months)  
9am - 5pm (summer months)

For further information please visit  
[www.nci-frowardpoint.org.uk](http://www.nci-frowardpoint.org.uk)  
Station telephone 01803 262173

If you would like to kindly contribute towards our operating costs please  
scan the QR code, thank you.  
(Charity Number 1159975)



**Dart Sails & Covers**

**WE HAVE MOVED**

Castor Farm Estate,  
Metherell Avenue, Brixham, TQ5 9QB

Please scan the QR code or visit  
[dartsailsandcovers.co.uk/our-move](http://dartsailsandcovers.co.uk/our-move)  
to find out more.



# RACING DOCUMENTS

**Advisory Note:** *The Notice of Race contains information competitors may require before racing and the Sailing Instructions are principally an ‘on the water’ document. In general Rules in the NoR and SI are not duplicated, therefore competitors should read both documents prior to racing. Text in these documents in ‘Italics’ is advisory. Some clauses common to all NoR and SI can be found in the Appendices.*

**Safety information** is on pink pages.

**Pursuit Race** information is on blue pages

## Organising Authority.

The Royal Dart Yacht Club is the Organising Authority (OA) for the races specified in the RDYC 2026 Racing Programme except as noted in **Exclusions** below.

## Exclusions

The following Notice of Race and associated Sailing Instructions do not apply to the Dartmouth Royal Regatta, Classic Regattas, or events organised by other yacht clubs. These events are all subject to separate Notice of Race and Sailing Instructions.

The notation [DP] in a rule in a NOR or SI means that the penalty for a breach of that rule may, at the discretion of the protest committee, be less than disqualification.

The notation [NP] in a rule in a NOR or SI means that a boat may not protest another boat for breaking that rule. This changes RRS 60.1

## NOTICE OF RACE (NoR) 2026 (All races except Pursuit Races)

### 1. RULES

**1.1** All races are governed by the rules as defined in **The Racing Rules of Sailing (RRS)**, including Appendix WP. Competitors are expected to abide by the RYA Racing Charter.

*Advisory note: RDYC Corinthian Class boats race under the RRS and may be in the same area as boats covered by this NoR. Therefore, RRS Part 2 rules apply when boats meet.*

**1.2** The RRS are changed as follows:

**1.2.1** RRS63 (Hearings) is amended to allow RRS Appendix T Arbitration.

**1.2.2** RRS Appendix RV, Reduced Visibility, replaces RRS Part 2 from sunset to sunrise.

**1.2.3** RRS 52 shall not apply. Auto pilots and electric winches are permitted.

**1.2.4 For races started from the club line only for Classes 1 and 2**

World Sailing Development Rule DR21-01 will be used at the start. The Definition of ‘Start’ is therefore changed as follows:

Start: A boat starts when her hull having been entirely on the pre-start side of the starting line, and having complied with rule 30.1 if it applies, any part of her hull crosses the starting line from the pre-start to the course side either:

(a) at or after her starting signal, or

(b) during the last one minute before her starting signal.

When a boat starts in accordance with item (b) she shall not return to the prestart side of the line and will receive a two-minute time penalty added to her elapsed time, without a hearing. This changes RRS 35 and A5.

**1.3 IRC classes:**

**1.3.1** IRC part C shall apply (advertising permitted)

**1.3.2** IRC Rule 22.4 shall not apply – there will be no limitations on crew number or weight.

**1.3.3** IRC rule 15.2(d) shall not apply. Stored power may be used for steering in all races.

**1.3.4** IRC Rule 8.2.1(c) – a boat shall declare use of a secondary certificate in accordance with Rule 8.2 when entering a series.

**1.4 National Squibs** shall comply fully with their class rules.

**1.5[NP]Safety Regulations**

## **NOTICE OF RACE 2026 cont'd**

Please refer to Appendix 2 for Safety Regulations which are common to all RDYC racing

### **2. SAILING INSTRUCTIONS**

The Sailing Instructions can be found immediately after this NoR.

### **3. COMMUNICATION**

**3.1** The online official notice board is located at: <https://royaldart.co.uk/sail/racing-1/racing-noticeboard>

**3.2** Alerts for new postings on the online official notice board and pre race information will be broadcast on the WhatsApp Group 'RDYC Racing'. Membership of the group can be arranged by supplying a mobile number to [racing@royaldart.co.uk](mailto:racing@royaldart.co.uk).

**3.3** VHF radio: All boats shall carry a Marine VHF radio, either permanently installed or a waterproof portable. Boats shall monitor the designated race management channel at all times while intending to, or participating in racing.

**3.4** [DP] While racing, except in an emergency, a boat shall not make voice or data transmissions and shall not receive voice or data communication that is not available to all boats.

### **4. Eligibility, Entry and Fees**

**4.1** Races are open to boats entered by a RDYC full member only, with the following exception: Coastal Series events are open to members of local clubs subject to completion of the RDYC Entry Form no later than 1800 the day before the race.

**4.2** All boats competing in any races in this programme shall complete an online Race Entry Form no later than 1st April 2026. The link to the online form is available from the RDYC website.

**4.3 All boats shall, by entering any race, confirm their acceptance of and compliance with this Notice of Race and understanding of Appendix 2 (Safety requirements) and Appendix 3 (Safety Briefing).**

**4.4** There are no race fees.

### **5. CLASSES, HANDICAPS AND SERIES**

#### **5.1 Class 1 and Class 2**

**5.1.1** The Racing Committee will allocate boats to Class 1 or 2 at its discretion.

Race results will be calculated using IRC ratings. An additional result may be calculated using TCF-Golf.

#### **5.1.2 IRC Non-Spinnaker**

A boat may declare herself 'Non-spinnaker' and race under her non-spinnaker TCC for a series by advising the Sailing Committee before the first race in that series.

**5.1.3** Boats without an IRC Rating will be allocated to Class 1 or 2 at the Racing Committee's discretion. Their results may be calculated using the TCF-Golf, but will not be eligible for series trophies.

#### **5.2 Class 3**

Will comprise Squibs and any similar boats which are below the 5m minimum length for IRC.

Race results for Class 3 will comprise:

- Separate class results for Squibs.
- An overall result based on PY or its local equivalent.
- An additional result may be calculated using TCF-Golf.

#### **5.3 TCF-Golf**

- Yachts will start with the handicap determined by Halsail from races in 2025.
- 2025 Handicaps for Wednesday racing will be revised on completion of each Wednesday series as indicated by Halsail.
- New boats will start with a rating allocated by the Race Committee until enough races have been completed to allow a fairer handicap.

#### **5.4 Combined Results for a Series with Insufficient Entries.**

Class 1, 2 and 3 results may be combined into a single IRC and a single TCF-Golf result where entries in a series are insufficient to warrant separate class results.

#### **6. CREW LIMITATIONS**

- **IRC** – see NoR 1.3.2 (No limitations)
- **National Squib** - see NoR 1.4 (Class Rules)

#### **7. ADVERTISING**

Advertising may be displayed in accordance with the World Sailing Advertising Code.

#### **8. SCHEDULE**

The schedule of Races can be found in the Racing Programme <https://royaldart.co.uk/racing> and in this programme.

#### **9. VENUE**

The racing venue is Start Bay and the River Dart. For the Coastal Series the venue is extended to include coastal waters between Teignmouth and Plymouth.

#### **10. COURSES**

Courses are described in the Sailing Instructions Course Appendix.

#### **11. SCORING**

**11.1** One race is required to be completed to constitute a series.

- **Wednesday Series:** One discard will be allowed if four or five races are completed and two discards if six, seven or eight races are completed.
- **Day Race, Autumn and Frostbite Saturday Series:** 50% of completed races rounded up shall count.
- **Overall series,** where more than one series are combined into a result, 50% of completed races rounded up shall count.

**11.2** RRS A5.3 shall apply to all series.

**11.3** Results will be posted on the RDYC Website: <https://royaldart.co.uk/racing-results>.

**11.4** When an owner acts as Race Officer and, as a consequence, his boat is unable to compete, the boat will be scored her average points (less discards) for that series. (*This is entered as 'RDG Av excluding DNC' on the HAL system.*)

#### **12. PRIZES**

Prizes will be awarded to the winner of each series and may also be awarded to second and third places.

#### **13. RACE OFFICER DUTY**

Competing boats shall be prepared to supply a team to start and manage a race as indicated in the programme. Allocations for duties are in the **Sailing Programme**.

If a boat is unable to fulfil her duty, in the first instance she shall try to arrange a swap with another boat. If a swap is not possible, contact the RDYC office for assistance.

Inexperienced race teams may contact the RDYC office to request help.

#### **14. RDYC WEBSITE**

Copies of this Notice of Race, Sailing Instructions and entry forms are on the RDYC website (<https://royaldart.co.uk/sail/racing-1/racing-information>). In the event of a discrepancy the printed version as amended by any changes to the Sailing Instructions posted on the online official notice board shall be the definitive version.

#### **15. APPENDIX 1**

Please refer to the Appendix 1 for Data Protection, Rights to use Name and Likeness, Risk Assessment and Insurance.

# SAILING INSTRUCTIONS 2026

## (All races except Pursuit races)

(These SI apply as defined in the preceding NoR)

### 1. RULES

See NoR 1.0

### 2. CHANGES TO SAILING INSTRUCTIONS

**2.1** Changes to the sailing instructions will be posted on the online official notice board at least one hour prior to the scheduled start time of the first race to which the change applies, with an alert on the 'RDYC Racing' WhatsApp group. Flag L will not be displayed – this changes RRS Race Signals.

**2.2.** Changes to Sailing Instructions may be made on the water by VHF radio in accordance with RRS 90.2(c).

### 3. COMMUNICATIONS WITH COMPETITORS

**3.1** Information ashore including Abandonment, mandatory wearing of Personal Flotation, and harbour racing will be advised via the "RDYC Racing" WhatsApp group

**3.2** On the water, the race committee intends to monitor and communicate with competitors on

- VHF radio channel a (M1). An alternative VHF channel may be used and will be advised via the 'RDYC Racing' WhatsApp group.

Failure to receive any transmission shall not be grounds for redress. This changes rule 61.1(a).

**3.3** The following communications will be made by VHF radio:

- Course information
- Time checks

• Changes to starting sequences

**3.4** The following communications may be made by VHF radio:

- Mandatory requirement to wear a personal flotation device.
- Changes to Sailing Instructions.
- Starting signals, recalls, postponement, shorten course and abandonment signals.

**3.5** Visual signals may not be used - This changes RRS26, 29 and Race Signals.

### 4. CODE OF CONDUCT

[DP] Competitors and support persons shall comply with reasonable requests from race officials.

### 5. SIGNALS MADE ASHORE

Visual signals will not be displayed ashore – see SI 3.1

### 6. SCHEDULE OF RACES

**6.1** The schedule is in the Racing Programme <https://royaldart.co.uk/racing>.

**6.2** Start times for the first start are in the Racing Programme. The warning signal for subsequent classes will be made at the same time as the start of the preceding class. Class(es) subject to a general recall shall start in sequence after the last scheduled start.

*Note the early start times for Wednesday Evening races at each end of the season).*

**6.3** Wednesday Evening starting sequence (except the Start Up series)

Starting Order	Class	Class Flag	Time after first start
<b>First</b>	Class 3	Naval 9	0
<b>Second</b>	Class 2	NP 2	+5 mins
<b>Third</b>	Class 1	NN 1	+10 mins

**6.4 Wednesday Start Up, Coastal, Autumn and Frostbite Series:** All classes will start together.

## **7. CLASS FLAGS**

**7.1** See table in SI6.3.

**7.2** Boats other than Squibs shall display their class flag on their backstay (or close to the stern if no backstay available).

*Advisory note: For identification purposes, RDYC Corinthian class boats will display Numeral 5 – see NoR1.1.*

## **8. COURSES, MARKS AND RESTRICTED AREAS.**

**8.1** Courses will be selected from those given in the Courses Appendix.

<https://royaldart.co.uk/sail/racing-1/racing-information>

**8.2** Marks are described in the same Appendix.

**8.3** Restrictions in the Racing Area are defined in Section 4 of the Courses Appendix. Other hazards to navigation exist and safe navigation is the sole responsibility of a boat's crew.

## **9. THE START**

**9.1** Races will be started using RRS 26 with the warning signal made 5 minutes before the starting signal.

**9.2** Starting arrangements are given in the Courses Appendix.

**9.3** When a race committee boat is not available, a designated RDYC competitor will act as the starting boat by broadcasting a time check, course and RRS26 times on VHF Ch M1 (a). Visual and sound signals will not be made. This changes RRS26, 29 and Race Signals.

**9.4** For races involving a series of starts only, a boat that does not start within four minutes after her starting signal will be scored Did Not Start without a hearing. This changes RRS A5.1 and A 5.2

*Advisory note: if the majority of boats have not started after 4 minutes, the RO may Abandon and restart the race – see RRS32.1(d)*

## **10. THE FINISH**

**10.1** Finishing arrangements are given in the Courses Appendix.

**10.2** When a race committee boat is not available at the finish, boats shall note their own finish time using GPS time. Where practicable, boats ahead and astern shall be noted. Times shall be advised by WhatsApp Racing Group or by email to [racing@royaldart.co.uk](mailto:racing@royaldart.co.uk) as soon as possible after finishing.

## **11. POST-RACE PENALTIES**

A post race penalty shall be a boat's score made worse by two points, but not worse than Did Not Finish, as permitted by RRS44.3(c)

## **12. TIME LIMITS (CHANGES RRS 35)**

The following time limits shall apply:

<b>Series</b>	<b>Time Limit</b>	<b>Extension</b>
<b>Wednesday</b>	20:15	30 minutes, i.e. to 20:45
<b>Round the Cans day race</b>	3 hours	1 hour, i.e. to 4 hours
<b>Autumn</b>	3 hours	1 hour, i.e. to 4 hours
<b>Frostbite</b>	2 hours	30 minutes, i.e. to 2½ hours
<b>Coastal</b>	Specified in 'Courses for Coastal Series'	

The extension shall apply if at least one boat in that class has finished within the time limit.

The Race Officer may, before the start, impose an earlier time limit with a shorter or no extension

## **SAILING INSTRUCTIONS cont'd**

if conditions require it, e.g. the time limit or it's extension would be after sunset.

If no boat finishes within the time limit, or the Race Officer decides that it is unlikely that any boat will finish within the time limit, the race may be retrospectively shortened by an announcement on VHF and times for completion of the previous lap may be used to determine results.

### **13. HEARING REQUESTS**

**13.1** The protest time limit is two hours after the last boat has finished the race of the day.

**13.2** Hearing request forms are available from the online notice board or on request from the sailing committee.

**13.3** Notices will be posted on the online notice board no later than 30 minutes after the protest time limit to inform competitors of hearings in which they are parties or named as witnesses.

**13.4** When a protest is lodged, a boat may at the same time request Arbitration.

---

## **ADDITIONAL SIs FOR COASTAL SERIES 2026**

### **1. RACE CONTROL, RDYC REPRESENTATIVE AND VHF RADIO COMMUNICATION**

**1.1** There will be a single start for Class 1 and Class 2.

**1.2** A designated RDYC competitor will act as the starting boat by broadcasting a time check and RRS26 times on VHF Ch M1 (●). Visual & sound signals will not be made. This changes RRS 26 and Race Signals. Failure to receive any transmission shall not be grounds for redress. This changes RRS 61.1(a).

### **2. SELF-TIMING, TIME LIMITS, REPORTING TIMES**

**2.1** Boats shall record their finishing time using GPS time. Where practicable, boats ahead and astern shall be noted.

**2.2** Time limits are specified in the Courses Appendix. The time limit will be extended by two hours if one or more boats finish the course within the time limit. This changes RRS 35.

**2.3** Finishing times shall be notified no later than 14:00 on the Monday following the race by one of the following means:

- 'RDYC Racing' WhatsApp group
- email to [racing@royaldart.co.uk](mailto:racing@royaldart.co.uk)
- Direct to the RDYC representative by VHF or Text Message.

### **3. HEARING REQUESTS**

Protests forms must be handed to the RDYC representative or notified to the RDYC office by e mail or telephone by 14:00 on the Monday following the race.

### **4. RESULTS AND PRIZES**

Results will be displayed on the RDYC website <https://royaldart.co.uk/racing-results>. Prizes will be awarded to the winning yacht and subsequent places at the sailing committee's discretion.

# APPENDICES

The following Appendices are common to all RDYC NoR and SI

## APPENDIX 1 - DATA PROTECTION, RIGHTS AND INSURANCE

**1.1 DATA PROTECTION** The personal information you provide to the organizing authority will be used to facilitate your participation in the event. If you have agreed to be bound by the Racing Rules of Sailing and the other rules that govern the event (the rules), the legal basis for processing that personal information is contract. If you are not bound by the rules, the legal basis for processing that personal information is legitimate interest. Your personal information will be stored and used in accordance with the organizing authority's privacy policy. When required by the rules, personal information may be shared with the RYA, your national authority and/or World Sailing. The results of the event and the outcome of any hearing or appeal may be published.

**1.2 RIGHTS TO USE THE NAME AND LIKENESS** By participating in any race in the schedule, competitors automatically grant to the organising authority the right to make use and show, at their discretion, any photograph, audio and video recordings and other reproduction of them made before, during or after such race, without compensation

**1.3 INSURANCE [NP]** Each participating boat shall be insured with valid third-party liability insurance with a minimum cover of £3 million per incident or the equivalent.

## APPENDIX 2 - SAFETY

### 2.1 RYA RISK STATEMENT:

Rule 3 of the Racing Rules of Sailing states: "The responsibility for a boat's decision to participate in a race or to continue racing is hers alone."

Sailing is by its nature an unpredictable sport and therefore inherently involves an -element of risk. By taking part in the event each competitor acknowledges that:

- a. They are aware of the inherent element of risk involved in the sport and accept responsibility for the exposure of themselves, their crew and their boat to such inherent risk while taking part in the event:
- b. They are responsible for the safety of themselves, their crew, their boat and other property when afloat or ashore:
- c. They accept responsibility for any injury, damage or loss to the extent caused by their own actions or omissions:
- d. Their boat is in good order, equipped to sail in the event and they are fit to participate:
- e. The provision of a race management team and other officials and volunteers by the event organiser does not relieve them of their own responsibilities.
- f. Patrol boats and safety boats are not provided.
- g. It is their responsibility to familiarise themselves with any risks specific to this venue or this event drawn to their attention in any rules and information produced for the venue or event and to read the Safety Briefing on page 8.
- h. For offshore races they are responsible for ensuring that their boat is equipped and seaworthy so as to be able to face extremes of weather: that there is crew sufficient in number, experience and fitness to withstand such weather: and that the safety equipment is properly maintained, stowed and in date and is familiar to the crew.

### 2.2 SAFETY EQUIPMENT

#### 2.2.1 Races East of Start Point

Squibs, Devon Yawls, Tofinou 7's and other day boats shall comply with their class rules regarding internal buoyancy and safety.

*contd over*

## **APPENDICES cont'd**

All other boats shall comply with World Sailing Offshore Special Regulations (OSR) Appendix B for inshore Racing.

*OSR Appendix B includes (but is not limited to): Personal flotation to 150N for each crew, bucket, anchor, compass, lifebuoy and heaving line. Boats with electrical systems, cookers or engines must carry fire extinguishers.*

### **2.2.2 Races Passing West of Start Point**

All boats in Coastal Races shall comply with OSR Category 4 equipment. Owners/Skippers shall confirm their boat complies by visiting [www.sailing.org/inside-world-sailing/rules-regulations/offshore-special-regulations/](http://www.sailing.org/inside-world-sailing/rules-regulations/offshore-special-regulations/)

**2.2.3 Boats carrying an EPIRB**, or a PLB attached to at least one crewmember, may choose to carry an Electronic Visual Distress Signal in place of pyrotechnic flares in accordance with current RYA advice.

**2.3 PERSONAL FLOTATION** RRS 40.1 (Personal Flotation to be worn) applies at all times to National Squibs, open decked boats and boats without guard wires.

**2.4 ENGINES** All boats shall have a working engine and fuel sufficient to get them back into the river against a foul tide and in the absence of wind, or alternatively their own support team.

## **APPENDIX 3 SAFETY BRIEFING**

- a) All crew must read and acknowledge understanding of the NoR Risk Assessment.
- b) The person in charge and their deputy shall be identified before participating in racing.
- c) Coastal hazards to navigation exist in the racing area(s). Safe navigation of the boat is the crews' responsibility.
- d) Competitors are reminded that patrol boats are not provided; therefore it is a condition of racing that all RDYC boats shall carry a VHF radio and a means of returning to the river (i.e. an engine or support boat).
- e) The safety equipment for the intended race area shall be indentified. All equipment must function properly, be regularly checked, be suitable for the size and intended use of the boat, and the crew appropriately trained in its use.
- f) In the first instance, a yacht shall try to rectify a minor safety incident itself, without recourse to external help.
- g) If the safety incident cannot be rectified immediately by the boat itself, and always in the event of a man overboard, the yacht shall call for help, e.g. by VHF radio Channel a (M1).
- h) All competitors are bound to render assistance on receipt of such a call – RRS Rule 1.1.1.
- i) Yachts rendering assistance will be entitled to claim redress (RRS 61.1(a)).
- j) If the victim yacht decides that help from another yacht is unlikely to rectify the situation, or help is not forthcoming, then the yacht shall escalate the situation by calling the Coastguard on Channel 16. A MAYDAY should be used if there is imminent danger to life. A Pan-Pan (urgency) call is appropriate to inform the coastguard of the problem and what you are doing about it. It will speed the response if you later issue a MAYDAY.
- k) If a casualty has to be transferred ashore, unless instructed otherwise, the best access to the shore/ambulance is the inner visitors' pontoon at Darthaven. If giving directions to the ambulance service, postcode TQ6 0SG can be used. The Harbour Master has a reserved space here which is kept vacant. DHNA river officers are on duty (until 1900 in April and October and 2300 between May and September) and can be contacted on Channel 11 to help with berthing.
- l) A fuller Safety Briefing with examples of Safety Incidents and their resolution, can be found on the RDYC website <https://royaldart.co.uk/wp-content/uploads/2023/11/Safety-Briefing.pdf>

# NOTICE OF RACE FOR PURSUIT RACES 2026

*The Pursuit race series on Saturdays and Wednesdays are designed as a less formal style of racing in the Corinthian spirit. That is to say that allowances shall be made for shorthanded and less nimble craft, close quarters manoeuvring is avoided, and any disagreements are settled amicably.*

## 1. RULES

**1.1** The races are governed by the rules as defined in **The Racing Rules of Sailing (RRS)**.

**1.2** 'White Sail' configuration is defined as sails complying with the boats 'Upwind Sail Area'.

## 2. COMMUNICATION

**2.1** All boats shall carry a marine VHF radio.

**2.2** Pre-race information may be broadcast on the WhatsApp group '**Corinthian Racing**'. Membership of the group can be arranged via R. Balfry or C. Mackie.

**2.3** On the water, racing information, e.g. the course to be sailed, will be broadcast on VHF radio. The channel will be stated in the SIs.

## 3. ELIGIBILITY, ENTRY AND FEES

**3.1** Races are open to all RDYC full members.

**3.2** All boats competing in any races in this programme shall complete an online Race Entry Form no later than 1800 on the day before their first race. The link to the online form is available from the RDYC website. Early completion before 1st April 2026 would be appreciated.

**3.3 All boats shall, by entering any race, confirm their acceptance of and compliance with this Notice of Race and understanding of Appendix 2 (Safety requirements) and Appendix 3 (Safety Briefing)**

**3.4** Boats without an IRC will be allocated a suitable RDYC club handicap by the organisers.

**3.5** There are no race fees.

## 4. CLASSES AND HANDICAPS

**4.1 The Pursuit Races** will have 2 divisions:

- IRC using IRC ratings to determine start times
- Corinthian using RDYC club handicap to determine start times

**4.2 IRC Class start times will assume 'Spinnaker' configuration. Boats may opt to sail 'White Sail' and start 1 minute before their designated start time.**

**4.3** Corinthian Class boats are restricted to 'White Sails Only'

**4.4** Corinthian Class crew shall remain in the cockpit, except briefly to perform a necessary task (this changes RRS 49.2).

## 5. SCHEDULE OF RACES

The schedule can be found in the **Racing Programme**.

## 6. COURSES

Courses are described in the **Pursuit Race Course Appendix**.

## 7. PENALTY SYSTEM

Rule 44.1 applies. (*Penalty turns*)

## 8. SCORING

**8.1** 50% of completed races rounded up shall count in a series.

**8.2** Results will be posted on the RDYC Website <https://royaldart.co.uk/racing-results>.

## 9. MANUAL POWER

RRS 52 shall not apply (*Auto pilots and electric winches are permitted*).

## **NOR FOR PURSUIT RACES cont'd**

### **10. PRIZES**

Prizes may be awarded.

### **11. APPENDIX 1**

Please refer to the Appendix 1 for Data Protection, Rights to use Name and Likeness, Risk Assessment and Insurance.

---

## **SAILING INSTRUCTIONS FOR PURSUIT RACES 2026**

### **1. CHANGES TO SAILING INSTRUCTIONS**

**1.1** Changes will be advised on the 'Corinthian Racing' WhatsApp group.

**1.2.** Changes may exceptionally be made on the water by communicating verbally or on Channel 72 by the duty boat.

### **2. COMMUNICATIONS WITH COMPETITORS**

**2.1** On the water, the race committee intends to monitor and communicate with competitors on VHF radio channel 72. Alternative channels may be used to avoid interference.

**2.3** The following communications may be made:

- Course information
- Mandatory requirement to wear personal flotation devices.

**2.4** Flag signals will not be used.

### **3. SIGNALS MADE ASHORE**

Pre-race information such as postponement or abandonment will be communicated on the 'Corinthian Racing' WhatsApp group.

### **4. SCHEDULE OF RACES**

**4.1** The schedule can be found in the **Racing Programme**. The start times shown are for the scratch boat.

#### **4.2 Pursuit Race Procedure.**

**4.2.1** Race duration is specified on the Start Times List. *Note that Saturday and Wednesday races may have different durations.*

**4.2.2** Entrants will be allocated a start time based on their IRC or RDYC Club Handicap. *Note that boats will have Wednesday and Saturday start times.*

**4.2.3** Start times will be listed on the RDYC website and broadcast on the 'Corinthian Racing' WhatsApp group.

**4.2.4** The Duty Boat will announce the course at least 10 minutes before the first start.

**4.2.5** The Duty Boat may decide that conditions are unsuitable for racing and cancel or abandon racing.

**4.2.6** Yachts will start at, or after, their start time.

**4.2.7** Yachts will sail the designated course until the finish time is reached.

**4.2.8** When the race is complete, yachts shall note sail numbers of the boat behind and the boat in front and also record their GPS position. This data to be communicated on the 'Corinthian Racing' WhatsApp group.

**4.2.9** If there is doubt over a position, the distance to the next mark shall be used.

## 5. CLASS FLAGS

Competitors shall display NP 5 to identify them as racing. Ensigns shall not be displayed.

## 6. COURSES, MARKS AND RESTRICTED AREAS

6.1 Courses, marks and restricted areas are described in the Courses Appendix

6.2 Coastal hazards to navigation exist in the racing area. Safe navigation of the yacht is the crews' responsibility.

## 7. PENALTY SYSTEM AFTER FINISHING

A post race penalty shall be a boat's score made worse by two points, but not worse than Did Not Finish. This changes RRS44.3(c)

## 8. HEARING REQUESTS

Section 13 of the general Sailing Instructions applies.

### EMERGENCY NUMBERS

#### Coastguard

VHF 16 or 999

Falmouth 01326 317 575

Solent 02 392 552 100

#### National Coastwatch Institute

VHF Ch 65 01803 262173

**Ambulance, Fire, Police** 999

**NHS Direct for advice** 111

**Race officer** VHF Ch 37 (M1)

**Pursuit Races** VHF Ch 72

**Class 1 may use** VHF Ch77

**DHNA** VHF Ch 11

**Yacht Taxi** VHF Ch 69  
07968 839846

**Darthaven Marina** VHF Ch 80  
(for emergency lift) 07887 726101

## RACING FLAGS



**Flag L**  
Changes to  
sailing instructions



**Flag H**  
All Classes start from  
RDYC Line  
*H over Class Flag. Class  
start from RDYC Line*



**Flag N**  
Abandon all races.  
*N over Class Flag. Abandon  
racing for that Class*



**Flag S**  
All Classes sail  
shortened course  
*S over Class Flag. Class(es)  
sail shortened course*



**Flag P**  
Preparatory Flag, 4  
minutes to start.  
*Flag P down. 1 minute to start*



**Flag X**  
Boat(s) on course side  
at start



**Flag Y**  
Lifejackets  
EN150N std must  
be worn

**Class Flags**  
NP1



NP3



NP2



# COURSE APPENDIX 2026

***Courses for Start Bay races are shown first, then by Pursuit Race Courses, followed by courses for the Coastal Series. Words in italics are advisory and do not constitute part of the Course Instructions.***

***Please note Gate on some A and B courses (new 2026)***

## **1. Signalling the course: Listed Courses**

The course will normally be communicated by VHF Ch M1 (37a). An alternative channel may be used. The course may be changed between successive starts.

## **2. Alternative courses**

*An alternative course should only be used if no listed course is satisfactory. Describe the start line, each mark and its rounding direction in sequence and the finish line.*

## **3. Start and Finish Lines**

- Blackstone Point (BP)** Prolongation of the line joining the two white flag staffs at Blackstone Point, with Castle Ledge Buoy as the Outer Distance Mark (ODM). If a committee boat is present, it will be positioned as the inner distance mark and the line will be between the boat and Castle Ledge.
- Committee Boat (CB)** Between the staff displaying an orange flag on the Committee Boat and the course side of the ODM, which is the nearest adjacent mark. *Boats should be aware that others may not be finishing as they round or go through the gate.*
- RDYC Club Line (CL)** The transit of the RDYC Flagpole and outermost downriver pontoon pile.

## **4. Restrictions on Sailing Area**

- 4.1** While racing, boats shall not pass between any of the following and the shore: Western Blackstone Rock, Mew Stone Rocks, Combe Rocks, Dancing Beggars Rocks, Cod Rock (off Berry head) and Blackstone Rock (off Start Point).
- 4.2** West Rock Buoy (R) shall be passed to seaward EXCEPT when it is used as a rounding mark. *When West Rock Buoy (R) is used as a mark of the course, boats should stay close to it when rounding as the West Rock is awash at low tide and lies about 200m NW of the buoy.*
- 4.3 Boats must keep clear of ferries at all times, including the passenger ferries.**
- 4.4** When racing in the river boats not racing entering or leaving the river shall be treated as obstructions and RRS 19 and 20 shall apply (room to pass an obstruction and (Room to tack at an obstruction).
- 4.5** Rule 4.4 always applies when a non-racing boat is passing alongside the club moorings.

## **5. Mark Rounding**

- 5.1 Direction of Rounding - 's'** means leave or round mark to starboard, '**p**' to port.
- 5.2** All marks are rounding marks except H which may be a passing mark on certain courses.
- Gate** Pass between the CB and the specified mark. *(Usually H. Some boats may be rounding, or finishing while others are sailing through the Gate)*

## **6. Shorten Course**

In Course Groups A - F the Shorten Course will finish at the mark shown in red with square brackets. Lap time may be used. See SI 12.  
If required a race may be shortened at any rounding mark in accordance with RRS32.2.

## 7. Marks and approximate positions (WGS84) - see page 22 for Map

<b>ODM</b>	Nearest mark to the CB	(which may be H, L, C, T, Y, Z, 1, 2, 3, 4)
<b>H</b>	Homestone, red can buoy	50d 19.61'N, 3d 33.55'W
<b>M</b>	Mewstone Buoy, south cardinal buoy	50d 19.92'N, 3d 31.89'W
<b>R</b>	West Rock Buoy, south cardinal buoy	50d 19.86'N, 3d 32.47'W
<b>L</b>	Castle Ledge Buoy, green conical buoy	50d 19.99'N, 3d 33.11'W
<b>C</b>	Checkstone, red can buoy	50d 20.45'N, 3d 33.81'W
<b>X</b>	Yellow 6 knot buoy <i>(off Wash Point, N of Newf'nd Cove)</i>	50d 20.30'N, 3d 33.3'W
<b>Y</b>	Yellow 6 Knot buoy <i>(due N of Homestone, close to W. Blackstone)</i>	50d 19.98'N, 3d 33.66'W
<b>1</b>	RDYC 1, yellow conical buoy with number	50d 19.11'N, 3d 34.49'W
<b>2</b>	RDYC 2, yellow conical buoy with number	50d 18.7'N, 3d 33.4'W
<b>3</b>	RDYC 3, yellow conical buoy with number	50d 19.0'N, 3d 32.5'W
<b>4</b>	RDYC 4, yellow conical buoy with number	50d 19.6'N, 3d 32.4'W
<b>T</b>	Temporary orange tetrahedral or lozenge buoy	<i>may also replace X or Y</i>
<b>T1</b>	Temporary orange tetrahedral or lozenge buoy	<i>near Kingswear Castle</i>
<b>T2</b>	Temporary orange tetrahedral or lozenge buoy	<i>laid upriver</i>
<b>S</b>	Skerries, red can buoy	50d 16.3d'N, 3d 33.78'W
<b>Gate H</b>	Pass between the CB and Homestone Buoy	
<b>W</b>	Wave Buoy (3m SW of Home)*	50d 17.50'N, 3d 36.97'W

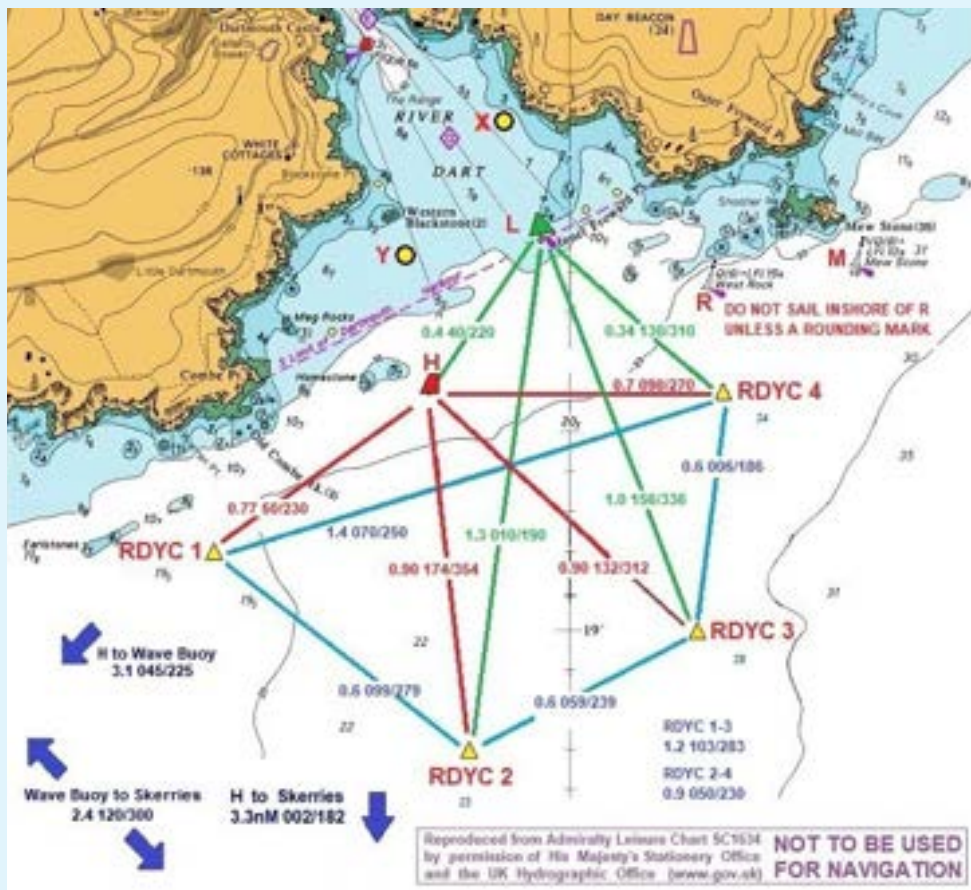
**\*The wave buoy** (pictured) has 2 associated orange floats which may lie 30m from the buoy itself. These floats shall be considered an extension of the Wave Buoy and rounded accordingly.



**WM** (Windward Mark) and **LM** (Leeward Mark) as designated by VHF for A9 Course.

WM and LM may be temporary laid orange marks or fixed marks.

# COURSE MAP (Inshore Buoys)



## Course Group Advice to Race Officers

Series	Class 1	Class 2 & 3	Combined Classes	Light Winds
<i>With CB and Marks in place</i>	Group A	Group B	Group B	Group C
<i>Weds Race with very light wind only in river</i>			Group R for all classes	
<i>Weds Race with CB, and Cruise liner due to leave</i>			Group Z: See RO Manual	
<i>Weds or Sat Races no CB</i>	Gp D (long)	Group B	Group E	Group F
<i>Pursuit Races Weds and Sat</i>	Club Marks in Place: CT		No Club Marks: WT	

# COURSES IN START BAY & RIVER DART

**Course Group advice to Race Officers.**

## **A & B: Normal Inshore Courses with a committee boat.**

A courses are longer courses for Class 1. B courses are shorter ones for Class 2 and Class 3. The Shorten Course will finish at the mark shown in red and square brackets. Shorten course length in brackets. Information in *Italics* is advisory only.

<b>1.</b>	<b>Wind South West</b>	
<b>A1</b>	Start at L 1p 2p [ <b>Lp</b> ] 1p finish at L	5.8 (3.3) NM
<b>B1</b>	Start at L 1p 2p [ <b>Lp</b> ] Hp finish at L	4.3 (3.3) NM
<b>2.</b>	<b>Wind South</b>	
<b>A2</b>	Start at L 2s 1s [ <b>Hs</b> ] Ls 2s finish at H	5.7 (3.0) NM
<b>B2</b>	Start at L 2s 1s [ <b>Hs</b> ] 2s finish at H	4.9 (3.0) NM
<b>3.</b>	<b>Wind South East</b>	
	<i>Start between 'T' and Committee Boat placed NW of Home to create a longer beat</i>	
<b>A3</b>	Start at T 3s 1s Ts [ <b>Gate H</b> ] 3s finish at H	5.8 (3.7) NM
<b>B3</b>	Start at T 3s Ts [ <b>Gate H</b> ] 3s finish at H	4.5 (2.7) NM
<b>4.</b>	<b>Wind East</b>	
	<i>Start between 'T' and Committee Boat placed W of Home to create a longer beat.</i>	
<b>A4</b>	Start at T 4s 3s Ts [ <b>Gate H</b> ] 4s Ts finish at H	5.0 (3.0) NM
	<i>If swell severe consider E4/F4. Start on BP line, CB if present is IDM.</i>	
<b>5.</b>	<b>Wind North East</b>	
<b>A5</b>	Start at H Ls 3s 1s [ <b>Hs</b> ] Ls 1s finish at H	6.2 (3.6) NM
<b>B5</b>	Start at H Ls 3s 1s [ <b>Hs</b> ] 1s finish at H	5.1 (3.6) NM
<b>6.</b>	<b>Wind North</b>	
<b>A6</b>	Start at H Yp 1p 2p [ <b>Gate H</b> ] Yp 2p finish at H	5.5 (3.0) NM
<b>B6</b>	Start at H Yp 1p 2p [ <b>Hp</b> ] 2p finish at H	4.9 (3.0) NM
<b>7.</b>	<b>Wind North West</b>	
	<i>'T' placed NW of Home to give a short first windward leg.</i>	
<b>A7</b>	Start at H Tp 1p 3p [ <b>Gate H</b> ] Tp 3p finish at H	5.7 (3.3) NM
<b>B7</b>	Start at H Tp 2p 3p [ <b>Hp</b> ] 3p finish at H	4.9 (3.0) NM
<b>8.</b>	<b>Wind West</b>	
	<i># 'T' placed W of Home to create a longer beat. May use Course A8X, 1 instead of 'T'.</i>	
<b>A8</b>	Start at 4 Tp 2p 4p [ <b>Gate H</b> ] Tp 4p finish at H	5.8 (3.8) NM
<b>A8X</b>	Start at 4 1p 2p 4p [ <b>Hp</b> ] 4p finish at H	5.5 (3.8) NM
<b>B8</b>	Start at 4 Hp 3p 4p [ <b>Hp</b> ] 4p finish at H	4.5 (3.0) NM
<b>9.</b>	<b>All Directions: Windward - Leeward Course</b>	
	CB start line at Leeward Mark (LM). Windward Mark (WM) advised by VHF.	
<b>A9</b>	Start at LM, repeat lap WMP Lmp until shorten course signal, finish at [ <b>LM</b> ]	

## C: Short Inshore Courses with a Committee Boat, for light winds

Must be used for all classes as may not be compatible with A and B courses.

<b>1.</b>	<b>Wind South West</b>		
<b>C1</b>	Start at H 1p 2p [Hp] 1p finish at H		4.2 (2.6) NM
<b>2.</b>	<b>Wind South</b>		
<b>C2</b>	Start at H 2s 1s [Hs] 2s finish at H		4.4 (2.6) NM
<b>3.</b>	<b>Wind South East</b>		
<b>C3</b>	Start at H 3p 4p [Hp] 3p finish at H		4.0 (2.2) NM
<b>4.</b>	<b>Wind East</b>		
<b>C4</b>	Start at H 4s 3s [Hs] 4s finish at H		3.7 (2.2) NM
<b>5.</b>	<b>Wind North East</b>		
<b>C5</b>	Start at H Ls 3s Hs [Ls] Hs finish at L (can also finish at H)		4.0 (3.0) NM
<b>6.</b>	<b>Wind North</b>		
<b>C6</b>	Start at H Tp 2p [Hp] 2p finish at H		4.3 (2.4) NM
<b>7.</b>	<b>Wind North West</b>		
<b>C7</b>	Start at H Tp 3p [Hp] 3p finish at H		4.2 (2.4) NM
<b>8.</b>	<b>Wind West</b>		
<b>C8</b>	Start at 4 Hp 3p [4p] Hp finish at 4 (can also finish at H)		3.7 (2.2) NM

## D: Longer Courses (with no committee boat)

D Courses may be used for longer pursuit races. These courses only have a single lap. If a longer race is required, then Castle Ledge shall be left to Starboard and the first lap repeated.

<b>1.</b>	<b>Wind South West</b>		
<b>D1</b>	Start at BP Wp Sp finish at BP		9.7 NM
<b>2.</b>	<b>Wind South</b>		
<b>D2</b>	Start at BP Ss Ws finish at BP		9.7 NM
<b>3.</b>	<b>Wind South East</b>		
<b>D3</b>	Start at BP 3s 1p Sp finish at BP		9.2 NM
<b>4.</b>	<b>Wind East</b>		
<b>D4</b>	Start at BP Wp Sp finish at BP		9.7 NM
<b>5.</b>	<b>Wind North East</b>		
<b>D5</b>	Start at BP Ss Ws finish at BP		9.7 NM
<b>6.</b>	<b>Wind North</b>		
<b>D6</b>	Start at BP Wp Sp finish at BP		9.7 NM
<b>7.</b>	<b>Wind North West</b>		
<b>D7</b>	Start at BP Ss Ws 4p finish at BP		9.7 NM
<b>8.</b>	<b>Wind West</b>		
<b>D8</b>	Start at BP Ss Ws finish at BP		9.7 NM

## **E & F: Inshore Courses with no committee boat**

**E** courses are for all Classes in the Wednesday, Day Race and Frostbite series in steady winds.

**F** courses are for all Classes in the Wednesday, Day Race and Frostbite series in light winds.

All races start and finish on BP line. CB if present is ODM.

When a Shorten Course has been broadcast (VHF Ch M1 (37a)), finish on the BP line as the boat approaches the mark in Red and Square Brackets which becomes the ODM and is left to Starboard.

<b>1. Wind South West</b>		
<b>E1</b>	Start at BP 1p 2p [Lp] 1p finish at BP	5.9 (3.4) NM
<b>F1</b>	Start at BP 1p 2p [Lp] Hs finish at BP	4.3 (3.4) NM
<b>2. Wind South</b>		
<b>E2</b>	Start at BP 2s 1s [Ls] 2s finish at BP	6.0 (3.4) NM
<b>F2</b>	Start at BP 3s Hs [Ls] 3s finish at BP	4.7 (2.4) NM
<b>3. Wind South East</b>		
<b>E3</b>	Start at BP 1p 2p [Lp] Hp 3p finish at BP	6.0 (3.8) NM
<b>F3</b>	Start at BP Hp 3p [Lp] Hp 3p finish at BP	4.7 (2.5) NM
<b>4. Wind East</b>		
<b>E4</b>	Start at BP 1p 3p [Lp] Hp 4p finish at BP	5.4 (3.5) NM
<b>F4</b>	Start at BP Hp 4p Hp 4p [Lp] Hp 4p finish at BP	4.9 (3.0) NM
<b>5. Wind North East</b>		
<b>E5</b>	Start at BP 1p Hs 2p 4p [Lp] Hs finish at BP	5.6 (4.6) NM
<b>F5</b>	Start at BP 2p 4p [Lp] Hs finish at BP	4.0 (3.0) NM
<b>6. Wind North</b>		
<b>E6</b>	Start at BP 2p [Ls] 4s 2s finish at BP	5.7 (2.6) NM
<b>F6</b>	Start at BP 2p [Ls] 4s 3s finish at BP	4.9 (2.6) NM
<b>7. Wind North West</b>		
<b>E7</b>	Start at BP 2s 1s 3p [Ls] 4s finish at BP	5.7 (4.5) NM
<b>F7</b>	Start at BP Hp 3p Hs 4p [Ls] 4s finish at BP	4.9 (3.7) NM
<b>8. Wind West</b>		
<b>E8</b>	Start at BP 3s 1s [Ls] 4s Hs finish at BP	5.4 (3.6) NM
<b>F8</b>	Start at BP Hp 4s Hs [Ls] 4s Hs finish at BP	4.2 (2.5) NM

## **Z: Courses using Buoys H, 1, 2, Y and T**

These courses are designed to be used when a cruise ship is scheduled to leave the river during racing.

The course will be communicated on VHF 37 (M1) and may not have a windward start. **All boats must keep clear of the fairway East of Buoys Y and H** (except when rounding close to the buoy) while the ship is exiting the river.

# COURSES IN RIVER DART

## R: River Courses

*For use when there is either no wind, fog or heavy weather in the range.*

River courses may be run from the RDYC Terrace or a Committee Boat.

*In fog races should be abandoned if visibility is less than the width of the river at the Club Line.*

Courses must not be set which involve racing through the ferry tracks.

### Sea Breeze Course and Strong NW Breeze

*In sea breeze conditions, the best wind is found between the club and Dartmouth Castle. Lay T1 approx N of of Dartmouth Castle on the Kingswear side of the river as the wind in the entrance is inconsistent. T2 should be just to seaward of the club line.*

**Spinnakers.** In strong winds (over 10 knots), Class1 are prohibited from using spinnakers in the river. The race officer's decision is final.

### T1 laid near Kingswear Castle, T2 just downstream from CL.

*Marks laid in the river near the Club Line need an extension mooring line.*

**R1** Start on CL T1p Lap (T2p T1p) finish on CL. Wind SE  
Repeat the Lap until the Shorten Course is signalled.

### Breeze further up the river

*Set the CB start line opposite yellow Ship Buoy MS1 and lay T2 well clear downstream of the Higher Ferry. **All boats must keep clear of the ferries at all times.***

**R2** Start at MS1 Lap (T2p MS1p) finish at MS1.  
Repeat the Lap until the Shorten Course is signalled.

*Set the CB start line opposite yellow Ship Buoy MS1 and lay T2 well clear downstream of the Higher Ferry.*

### Other Vessels:

**Boats must keep clear of all ferries at all times, including passenger ferries.**

**When racing in the river** boats entering or leaving the river and not racing shall be treated as obstructions and RRS 19 and 20 shall apply (*room to pass an obstruction and Room to tack at an obstruction*).

Rule 4.4 always applies when a non-racing boat is passing alongside the club moorings.

### Simultaneous use of Blackstone Point Line and Club Line on VHF Ch 77.

In heavy weather at the race officer's sole discretion, a Class 1 boat may be asked to set a separate course for class 1 boats from the BP line using marks close inshore using VHF Ch 77 while a simultaneous course is set in the river for class 2 and 3 using VHF Ch M1 (37). Note Corinthian Class may be using Ch 72.



---

# Goulden & Sons

2 The Old Workshops, St Johns Terrace, Totnes, TQ9 5JH  
01803 867359 | enquiries@gouldenandsons.co.uk

---

[gouldenandsons.co.uk](http://gouldenandsons.co.uk)

# PURSUIT RACE COURSES

*Words in italics are advisory and do not constitute part of the Course Instructions.*

*Yachts should listen on VHF Ch 72 for course instructions, changes to SI and starting instructions.*

## **1. Signalling The Course: Listed Courses**

The course will normally be communicated by VHF Ch 72.

## **2. Alternative Courses**

An alternative course may be set by describing the start line, each mark and its rounding direction in sequence.

## **3. Start Line**

Blackstone Point Line (BP) as described in the general Course Appendix section 3.

## **4. Finish**

Boats finish at the time specified in the Pursuit Race Start Times List. Note the name and/or Sail Number of the boat in front and boat behind, and note the GPS position. Send by WhatsApp to RDYC Corinthian Class.

## **5. Mark Rounding**

5.1 Direction of Rounding: 's' means leave or round mark to starboard, 'p' to port.

5.2 All marks are rounding marks

## **6. Restrictions On Sailing Area**

As described in the general Course Appendix section 4.

## **7. Marks And Approximate Positions (Wgs84).**

As described in the general Course Appendix section 7.

## **8. COURSE MAP**

As shown in the general Course Appendix.

## **9. BEWARE DANGERS**

At low water Springs, and when beating towards Homestone Buoy, beware Homestone Rock which lies 300m to the West of the Buoy. Least depth is charted at 1.5m.

Note also dangers 50m to the West of Checkstone Buoy charted at 1.6m.

For further information see "Avoiding Rocks", [royaldart.co.uk/wp-content/uploads/2023/11/Avoiding\\_Rocks.pdf](http://royaldart.co.uk/wp-content/uploads/2023/11/Avoiding_Rocks.pdf)

## CT: Inshore Courses for Pursuit Races

All races start on BP line. Repeat marks in brackets until time expires.

<b>1. Wind South West</b>	
<b>CT1</b> Start at BP Hs 1p (2p 3p 4p)	Lap 1: 3.3/Lap 2: 2.3 NM
<b>2. Wind South</b>	
<b>CT2</b> Start at BP 2p (Mp 4p 3p)	5.1 (3.1) NM
<b>3. Wind South East</b>	
<b>CT3</b> Start at BP (4p Lp Yp)	1.8 (1.9) NM
<b>4. Wind East</b>	
<b>CT4</b> Start at BP (Ms Hs Ys)	2.9 (3.2) NM
<b>5. Wind North East</b>	
<b>CT5</b> Start at BP 2p (Ms 3s 2s)	5.1 (3.7) NM
<b>6. Wind North</b>	
<b>CT6</b> Start at BP (Ms 3s Ls)	3.4 (3.4) NM
<b>7. Wind North West</b>	
<b>CT7</b> Start at BP (2p 3p Yp)	3.3 (3.2) NM
<b>8. Wind West</b>	
<b>CT8</b> Start at BP (3p Mp Yp)	3.9 (3.9) NM

D courses may be used for longer pursuit races.

## WT: Winter Courses for Pursuit Races

For use when no Club Marks are laid

All races start on BP line. Repeat marks in brackets until time expires.

<b>1. Wind South West</b>	
<b>WT1</b> Start at BP (Hp Mp Lp)	Lap 1: 2.4/Lap 2: 2.4 NM
<b>2. Wind South</b>	
<b>WT2</b> Start at BP Hp (Cp Hp Lp)	2.8 (2.1) NM
Or, if rough at Checkstone:	
<b>WT1</b> Start at BP (Hp Mp Lp)	2.4 (2.4) NM
<b>3. Wind South East</b>	
<b>WT3</b> Start at BP (Hs Cs Ls)	2.1 (2.1) NM
Or, if rough at Checkstone:	
<b>WT5</b> Start at BP (Ms Hs Ls)	2.4 (2.4) NM
<b>4. Wind East</b>	
<b>WT4</b> Start at BP (Hp Mp Lp)	2.4 (2.4) NM
<b>5. Wind North East</b>	
<b>WT5</b> Start at BP (Ms Hs Ls)	2.4 (2.4) NM
<b>6. Wind North</b>	
<b>WT6</b> Start at BP (Hs Cs Ls)	2.1 (2.1) NM
Or <b>WT5</b> Start at BP (Ms Hs Ls)	2.4 (2.4) NM
<b>7. Wind North West</b>	
<b>WT4</b> Start at BP (Hp Mp Lp)	2.4 (2.4) NM
<b>8. Wind West</b>	
<b>WT5</b> Start at BP (Ms Hs Ls)	2.4 (2.4) NM

# COURSES FOR COASTAL SERIES

**RDYC races** in this series are open to RDYC members and members of local yacht clubs provided an RDYC entry form is completed.

**RDYC members** entering RTYC or BYC races in the series shall complete an entry form for the organising club of the relevant race.

**Restrictions on Sailing Area.** Paragraph 4 of the Course Instructions applies to all races.

**Results.** Elapsed finish times should be reported on Racing WhatsApp or by email to racing@royaldart.co.uk.

## Bay Race

**Date** Saturday 25 April 2026  
**Start Time** 10:30. Warning Signal 10:25. Time Limit 4 hours.  
**Course** Start at Blackstone Point.  
Marks as advised by RDYC Representative on VHF Channel 77 and on Racing WhatsApp.  
Finish Blackstone Point self timed.  
**Shorten Course** In the event of calm weather, a shorter course may be specified.

## Goulden's Gallon of Rum Race

**Date** Sunday 10 May 2026  
**Start Time** 11:00. Warning Signal 10:55. Time Limit 6 hours).  
**Course** **A:** Start at BP Homestone (p) Orestone (p) Finish  
**B:** Start at BP Homestone (p) Finish  
**C:** as communicated by the Committee Boat.  
**Finish Line** Between the Race Box on Battery Point and Brixham YC Red Finish Mark (Buoy with red flag 50 d 24'42N 03 d 31'33W) crossed from East to West.

## Dart to Yealm Race

**Date** Saturday 6 June 2026  
**Start Time** 10:00. Warning Signal 0955. Time Limit 8 hours.  
**Course** Start at BP, sail direct to Finish Line at Yealm, passing to seaward of Blackstone Rock (off Start Point).  
**Finish Line** Prolongation of the line formed by two white poles adjacent to the hut on south side of river Yealm entrance at Mouthstone Point.  
**Shorten Course** Boats should time their transit by GPS of Longitude 3d 46.0' West. (on the East side of the entrance to Salcombe). In the event of no finishers this time may be used to determine the results.

## Yealm to Dart Race

**Date** Sunday 7 June 2026  
**Start Time** 0930. Warning Signal 0925. Time Limit 8 hours  
**Course** Start at R Yealm sail direct to BP Finish Line at Dartmouth, passing to seaward of Blackstone Rock (off Start Point).  
**Start Line** As Yealm Finish Line.  
**Finish** BP Line crossed South to North.  
**Shorten Course** Boats should time their transit by GPS of Longitude 3d 46.0' West. (on the East side of the entrance to Salcombe). In the event of no finishers this time may be used to determine the results.

## **Brixham to Salcombe and Salcombe to Dart**

**Date** Saturday 4 July and Sunday 5 July 2026  
**Start Time** TBC  
See Brixham YC website for Entries, NoR, Sailing Instructions and Courses ([www.brixhamyachtclub.com](http://www.brixhamyachtclub.com))

## **Salcombe and Back Race**

**Date** Saturday 11 July 2026  
**Start Time** 10:30. Warning Signal 10:25. Time Limit 6 hours.  
**Course** Start at BP, SHA Speed Buoy (s), Finish at BP.  
**Shorten Course** In the event of calm weather, a shorter course may be specified.  
**SHA Speed Buoy** Approx: 50d 13.098°N, 03d 46.494W. There are three Speed Buoys running NE just offshore of the Bar. This is the central one.

## **Brixham and Back Race**

**Date** Saturday 1 August 2026  
**Start Time** 10:30. Warning Signal 10:25. Time Limit 6 hours.  
**Course** Start at BP, H(p), Brixham Mark F(p), Finish at BP.  
**Shorten Course** In the event of calm weather, a shorter course may be broadcast on VHF Ch 37. ●

*Brixham Mark F is a yellow buoy with a white flag, at 50d 24.60° N, 003d 30.40'. It lies on a bearing 045de, 0.3NM from the end of the breakwater in Brixham Harbour.*



# LR RIGGING

DARTMOUTH • DEVON

**Honest Advice and Accurate Pricing**

**A FULL RANGE OF RIGGING SERVICES FOR  
CRUISING, RACING AND CLASSIC YACHTS**

### **SERVICES:**

- Spars
- Deck hardware
- Wire, rope & carbon fibre
- Modern & traditional
- Steel & aluminium fabrication
- Leatherwork
- Winch servicing
- Splicing
- Furling gear
- Guardwires

**01803 840160 • [lee@leerogersrigging.co.uk](mailto:lee@leerogersrigging.co.uk)  
[www.leerogersrigging.co.uk](http://www.leerogersrigging.co.uk)**



# DARTMOUTH ROYAL REGATTA SAILING WEEK

Thursday 27<sup>th</sup> – Sunday 30<sup>th</sup> August 2026



[www.ingridabery.com](http://www.ingridabery.com)

**COME AND TAKE PART IN FOUR DAYS OF CLOSE RACING IN  
DEVON'S SPECTACULAR START BAY.**

- IRC, RYA YTC, Classics and DayBoat racing over four days incorporating the IRC Nationals and J109 Nationals
- Passage Race from Brixham to Dartmouth on Wednesday 26<sup>th</sup> August.
  - 2 day White Sail and Gaffer events on the Saturday and Sunday.
  - Onshore events in Dartmouth include live music, jetpack man and fireworks on Saturday evening.
- A warm welcome from the Royal Dart and Dartmouth Yacht Clubs.



Entries are open on  
[dartmouthsailingweek.com](http://dartmouthsailingweek.com)



# LADIES AFLOAT

This very popular section of the Club thrives due to the enthusiasm and commitment of the members. We meet at the Club on Thursdays from early spring to October. Experience varies from novice to blue-water sailor, all with a common enthusiasm for being afloat. This is a wonderful opportunity to 'get out on the water' and make new friends. Our skippers have built confidence by bringing their own boats to LA events.

We do not provide formal training courses but there is the opportunity to learn from the wide diversity and depth of skills of our members. Our regular activities include yachting and dinghy sailing with support boats

Events coordinated on WhatsApp Group: send us an email ([ladiesafloat@royaldart.co.uk](mailto:ladiesafloat@royaldart.co.uk)) or RDTc office. New members receive a very warm welcome. If you need help, please ask!

**All dates (Thursdays unless specified otherwise) are subject to weather and availability of boats. All timings and locations to be confirmed via 'WhatsApp' group before each event.**

Date	Event	Date	Event
12 Mar	Getting ready for the 2026	02 Jul	Yachting day
19 Mar	Welcome day	09 Jul	Guest boats to watch Classics
26 Mar	Getting ready to go afloat	16 Jul	Ladies Afloat 'Awayday'
2 Apr	Club & owners motorboats	23 Jul	Upriver: dinghies/Sailability
9 Apr	Intro to all Club boats	30 Jul	AM; Guest dayboats
16-Apr	Practical skills, meet yachts	30 Jul	PM Co-skipper familiarisation
23 Apr	Upriver trip for all 'fitted out'	6 Aug	Yachting day
30 Apr	Club & owners motorboats	13 Aug	Dinghies/dayboats/support boats & Motorboats
7 May	Ladies & guest boats Brixham	20 Aug	
14-May	AM: Dinghies/support boats PM: Co-skipper familiarisation	03 Sep	
		10 Sep	Salcombe overnight
21 May	Salcombe cruise (overnight)	17 Sep	Dinghies/support boats & M/boats
28 May	AM: Dinghies/support boats PM: Co-skipper familiarisation	24 Sep	Brixham overnight
		1 Oct	Yachting day
4 Jun	Yachting day	08 Oct	Guest yachts, tea on terrace
11 Jun	Upriver 'jolly'	15 Oct	Yachting finale/pontoon party
18 Jun	Yachting day	5 Nov	Review and plan 2027
25 Jun	Upriver Party at Waddeton	10 Dec	Christmas lunch

# BOYS IN BOATS

**Boys in Boats** welcomes all club members for a morning's relaxed sailing usually out in Start Bay on member's boats, encouraging more use of our boats and for everyone, boat owner or not, many chances to sail more.

**We meet** on the terrace at 10:00 on Tuesdays, choose a boat or three from those attending, and get back to the club around 1315 for a bring your own lunch.

**Some weeks** we get up to one of our more adventurous jaunts: Brixham for Fish and Chips; a day on Lulotte, a Swan 55 yawl or Lunch by Launch somewhere up river.

**Cruising:** In June we go further on a week-long cruise to various watering holes around the coast. This year it is about the turn of Cornwall.

**Boys in Boats** is a walk in December thinly disguising our Christmas Lunch at RDYC.

**Do feel free just to turn up**, but to get details of our events see below, and cancellations contact Norman Doidge with your mobile number to be added to the **WhatsApp Group**: norman.doidge@hotmail.com, 07968 375528.

**All dates (Tuesdays unless specified otherwise) are provisional and weather dependent.**

Date	Time BST	Activity (Tuesdays). All dates provisional.
Late Mar-Apr TBC	½ day	Working Parties: pontoon & dinghy prep
21 Apr	½ day	First day sailing of the year
28 Apr, 5, 12 May	½ day	Day sailing
19 May	Whole day	Brixham Fish and Chips! HW Dover 13:30 BST
26 May	Whole day	Backup for Brixham HW Dover 16:28 BST
2 Jun	½ day	Day sailing
5-9 Jun	Thu-Tue	Week cruise probably Falmouth TBC
16 Jun	½ day	Day sailing
23 Jun	¾ day	Lunch by Launch (venue tbc) HW D/M 1337 BST
30 Jun, 7, 14 Jul	½ day	Day sailing
21 Jul	Whole day	PLYMOUTH sailing Chris Smith's Halberg Rassy
28 Jul	½ day	Day sailing
4, 11, 19, 5 Aug	½ day	Day sailing
25 Aug -	Regatta Week, No BiB	
Sept-Oct	½ day	Will sail depending on weather
Sept-Oct	Tuesdays	End of season working parties as needed
Wednesday 2 Dec	¾ day	Christmas walk and lunch

# CRUISING & MOTORBOAT GROUP



Our group regularly cruises the beautiful Devon and Cornwall coastline and longer trips to the Channel Islands and Isles of Scilly, while others sail further afield to Brittany, Ireland, Scotland even Spain.

The group is very sociable, supportive and friendly, welcoming RDYC members with power boats, yachts both large and small, and non-boat owners who want to cruise. We provide the opportunity to enjoy our local area in reassuring company.

Therefore, if you enjoy making friends, sociable sailing, pooling knowledge and experience with other cruisers, then this is the group for you.

If you would like to receive timely postings from other Cruising members, with the occasional chat, do join the RDYC Cruising WhatsApp Group.

**To join the Group WhatsApp, e-mail Pam and Dick Morgan: [cruising@royaldart.co.uk](mailto:cruising@royaldart.co.uk) New members receive a very warm welcome. If you need help please let us know!**

**Corinthian Racing:** The successful Corinthian Class has been established to provide a focus for cruising boats to participate in “round the cans” pursuit competition with individual start times for each boat on Wednesdays and Saturdays.

Date	Event
7-8 Mar	Cruising weekend forum RDYC
18 Apr	Fitting out supper for all RDYC members
1-3 May	Salcombe ‘shakedown cruise’
23 May	RDYST Charity Day (racing and social)
29 May	Yealm / Cawsands cruise
12-27 Jun	Isles of Scilly cruise
12-15 Jun	Falmouth Classics
5-11 Jul	Salcombe Merlin Week
7-11 Jul	Yacht Club Classique in Dartmouth
11-12 Jul	Tunes on the (Blackpool) Sands
15-26 Jul	Channel Isles cruise in company
8 Aug	Mike Moody Charity Day (Parkinson’s Disease) race & sSocial
11-12 Aug	Plymouth Firework Championship
12-13 Sep	Closing Salcombe cruise
10 Oct	Laying up supper

# JUNIOR SAILING

**Bringing the joys of sailing** the RDYC Junior Sailing Programme remains ever popular with children aged 8-16 yrs. Held every year under the accreditation of the RYA, the formal training takes children through the RYA stage 1 -4 syllabus.

Numbers are limited by the availability of suitable dinghies and qualified instructors and priority is given to club members. Junior sailing provides a showcase and vibrant focus for the club each Saturday morning for 12 weeks starting in early May with typically 40 children out on the water. Inevitably, this requires a large pool of volunteers.

There are plenty of opportunities for helpers with or without experience to get involved.

**Contact:** Suzanne at [admin@royaldart.co.uk](mailto:admin@royaldart.co.uk)

## **Ready the Boats**

**on Saturday 11 & 18 April, 0930 - 1300**

Parents and volunteers are asked to help get the boats ready for the sailing season.

## **Taster morning Saturday 25 April**

For new sailors who have a place on the course, designed primarily to whet appetites for sailing and allow our RYA approved Instructors to assess abilities and ensure that new sailors are placed in the right training group.

## **Saturday morning course**

**Saturdays 2 May to July 19**

The full programme runs for 12 weeks on Saturday mornings. Sailors progress through the RYA stages 1-4, with a certificate at the end of each stage. We also provide Assistant Instructors (and any keen parents!) with the opportunity to crew on racing boats on a Saturday afternoons or Wednesday evenings (helming, mainsheet, jib and spinnaker trimming, foredeck work, tactics and navigation).

## **Mini Racing Points Series/Dartmouth Regatta**

A Tuesday and Thursday evenings Mini Racing Points Series starting mid to end of July provides junior sailors with a chance to put into practice

some of their new-found skills and compete with their peers. Encouragement is given to take part in the Dartmouth Junior Regatta on 22-24th August to compete for some silverware.

## **RDYC Junior Sailing Week 27 - 31 July**

The RDYC Junior Sailing Week, a fun and action-packed time for all ability levels, runs from 27 July for 5 days.

**Please visit <https://royaldart.co.uk/junior-sailing/junior-sailing-week> for full details.**

## **Falling Leaves Mini Regatta - Early Sept**

The season finishes in style with the Falling Leaves mini regatta in early September with invitations sent to the other sailing clubs on the Dart.

---

## **FAMILY DINGHY EVENINGS**

These evenings are run in the summer months (June, July and early August) for members to have an informal evening of fun on the water in RS Quest dinghies with support boat cover.

Skill level is varied and parents are welcome to bring their junior sailors along. These evenings are very dependent on weather and having support boat cover and are usually organised via a WhatsApp group.

If you would like to take part, please contact [rearcommodoresailing@royaldart.co.uk](mailto:rearcommodoresailing@royaldart.co.uk) to be sent the joining form and be included in the WhatsApp group. Dates to be confirmed.



## JUNIOR SAILING & RDYST SCHOOLS PROGRAMME

Date	Time BST	Event
Sat 14 & 18 April	9:30-13:00	Preparing boats for season
Sat 25 April	10:00-13:00	Taster morning/instructor training
Sat 2 May - Sun 19 Jul*	<b>Every Saturday</b> 09:30-12:30 *Sat 27th June and Sat 18th July sessions moved to Sunday	<b>Juniors RYA Training Programme (12 weeks)</b>
Dates to be confirmed	Friday 17:30	Family dinghy evenings
7, 9, 14, 16, 21, 23, Jul & Sat 25 Jul	Tues & Thurs 17:00-20:00	Junior Points Race series Racing (RDYC Members)
27 Jul to 31 Jul	Mon-Fri 09:30-15:00	RDYC Junior Sailing Week
5 September	Sat 09:30-13:30	Falling Leaves end of season 1-day Regatta

## ROYAL DART YOUTH SAILING TRUST SCHOOL SESSIONS

2, 9, 16, 23, 30 Jun	Tuesdays 17:00 – 19:30	Dartmouth Youth Group
w/c 29 June, 6, 13 Jul	Mon-Fri 09:30-14:30	Local primary schools Year 6 Taster Days

## RYA TRAINING

The club is keen that members both increase their skills and keep them up to date, so runs a series of training courses each year, discounted for members.



Application forms, details and times are on the website. Check the website <https://royaldart.co.uk/train> for current information.

**To drive a club safety boat**, members must hold the RYA Powerboat 2 certificate (or an equivalent qualification) and undertake a boat-specific test with Colin Bower or Paul Jewell, our Power Boat Instructors. Safety Boat Drivers for Junior Sailing events need to do the RYA Safety Boat course. Full details can be found at on members' Smartclubcloud App. Contact [admin@royaldart.co.uk](mailto:admin@royaldart.co.uk) for more information and dates of courses.

# Royal Dart Youth Sailing Trust

The RDYST was formed in 2016 as part of the 150th anniversary celebrations of The Royal Dart Sailing Club.

**The Dart is a busy, vibrant and integral part of life in South Devon**, but it is inaccessible to many local people who should be enjoying its many attractions, especially children from disadvantaged backgrounds who simply cannot afford to get on the water.



**The RDYST was founded to enable local youth from less privileged backgrounds** to enjoy sailing on the waters of the Dart, under the care and guidance of RYA registered organisations and instructors. We want them to have an opportunity that many of us take for granted.

**Sailing in small boats is exciting.** It gives children the chance to take responsibility for their craft, learn the mechanics of sailing and enjoy healthy competition. It builds confidence, teamwork and leadership skills in a fun and safe environment. Our programme includes water based activities for youngsters in the age range 10-16 years.

**Environmental awareness** was incorporated into all our activities in 2026. All our sessions include briefings on the local environment and the flora and fauna along the River Dart, as well as beach cleans and wildlife spotting.

In 2025, as in earlier years, over 200 children from 8 local primary schools enjoyed their first taste of sailing during **Schools Weeks in July**, along with older pupils taking part in weekly dinghy sailing. We'll be running this Programme again in 2026.

**Introduced in 2023** and entering its 4th year, the Trust continues Career Opportunities Through Sailing (COTS), a sponsored scheme to train and develop youngsters from 11 years old to gain their qualification as Dinghy Instructors over a period of 4 years. In 2025, as in previous years, we added a further 2 youngsters into the 1st year and they will progress to their 2nd year this season and we will add in 2 more to Year 1 in 2026.

**Also in 2026, we will be sponsoring** fifteen teenagers aboard 'Prolific', owned by the Ocean Youth Trust. Previous voyages have been very successful in building skills and relationships among those who took part. Our aim for these trips is to engage the participants in all aspects of sailing a large vessel and encourage interest in working in the marine industry and enhance their life skills in the process.

**Paddleboarding and kayaking sessions** for over 100 Year 7 and 8 pupils from Dartmouth Academy have become part of our standard programme. Run in September, it's a team building exercise to bring together the pupils who have joined the Academy from local junior schools

**Partnering with Dartmouth Youth Group** Following a successful trial in 2025, in 2026 we are hosting dinghy sessions for 16 DYG attendees on Tuesdays during June.

**All the above activities** rely heavily upon the support of RDYC Volunteers, Junior Assistant Instructors, Safety Boat drivers and of course generous supporters and donors who help to fund them.

**We do need your support. please.** Visit our web site for more information on how you can help this worthwhile cause or ask at the Club Office or contact one of our Trustees (admin@royaldart.co.uk).

**spare@s**  
**MARINE**

Search • Source • Supply



**PREMIER**

MARINAS ~ NOSS ON DART

Marine Spares Specialists ~ Safety Beacon & Lifejacket Servicing



01803 607299

sales@sparesmarine.co.uk

**www.sparesmarine.co.uk**

Spares Marine, Unit 5F, Noss On Dart Marina, Bridge Road,  
Kingswear, Dartmouth TQ6 0EA, UK



# BALTIC WHARF

## Your Complete Boatyard



- Lift out & relaunch
- Monthly storage ashore open & undercover
- On site chandlery
- Adjacent to town/good road access
- Level concrete yard
- All boats held in quality cradles
- Electric/water access
- Winter & summer deals
- Friendly and flexible staff

**Baltic Wharf Boatyard**  
St Peter's Quay,  
Totnes, Devon TQ9 5EW

[enquiries@balticwharf.co.uk](mailto:enquiries@balticwharf.co.uk)  
[www.balticwharf.co.uk](http://www.balticwharf.co.uk)  
Tel: 01803 867922