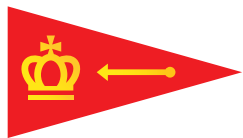
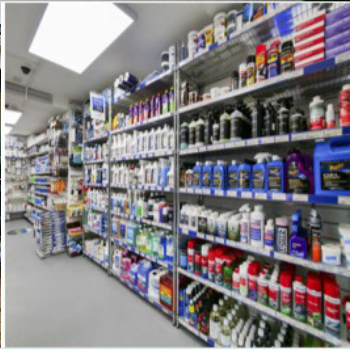


RDYC



ROYAL DART YACHT CLUB
SAILING PROGRAMME 2025



CHANDLERY · MARINE SERVICES · BOAT YARD · MARINA

DARTHAVEN
MARINA



Darthaven Marina · Brixham Road · Kingswear · Devon · TQ6 0SG
T +44 (0)1803 752 242 · E chandlery@darthaven.co.uk

DARTHAVEN.CO.UK

ROYAL DART YACHT CLUB SAILING PROGRAMME 2025

Welcome to the 2025 programme with a lot that's new planned for the year

New Racing Rules for 2025, a full Corinthian Pursuit Racing Programme and IRC racing almost every weekend plus Parties on the terrace with Street Food after Saturday racing. And old favourites back again.

A few tweaks to Wednesday Evening Racing with safer courses in the River and spinnakers back for all classes in light weather. Coastal Races with competition from our neighbouring clubs off to the usual favourite destinations.

The Corinthian Class is perfect for those wanting to try racing for the first time with staggered Pursuit starts avoiding the usual melee, as well as ideal racing with family or short-handed.

Our Junior Sailing Programme after more than 65 years is still giving children and young people the chance to enjoy being on the water while acquiring the technical skills of sailing, teamwork and sportsmanship in the Saturday morning courses, Junior Sailing Week, and our schools' weeks. See the Training Pages for what is also on offer for adults.

Ladies afloat continues to encourage the development of independent skills with enthusiasm and commitments by members, not to mention tea and cakes!

Boys in Boats caters for those with boats to sail them more, and non-owners to sail more as well. Our cruise this year is to the Jurassic Coast and beyond for a change.

Friday Evening Dinghy Sailing in our RS Quest dinghies is a family fun event open to all members.

The Dartmouth Classics is a spectacle at the end of June.

Dartmouth Royal Regatta Sailing Week at the end of August is the year's highlight followed by the Week of Sail cruise with a bit of racing thrown in.

For full details and contacts see the relevant pages in this programme.

RDYC Office	01803 752496	Racing Committee	
RDYC Bar	01803 752272	Mike Mackie	07740 022602
Rear Commodore Sailing	07976 687921	John Milsom	07767 601563
Group Coordinators	see group pages	Norman Doidge	07968 375528
IRC Ratings	dsgoulden@yahoo.co.uk		

SAFETY CONTACTS

Coastguard	VHF 16 or 999	Falmouth 01326 317 575	Solent 02 392 552 100
Ambulance	999	NHS Direct for advice 111	
Race officer	VHF Ch 37 (M1)	Class 1 may be on Ch 72	
Dart Harbour	VHF Ch 11	07968 839846	
Darhaven Marina	VHF Ch 80	(for emergency lift) 07887 726101	

Royal Dart Yacht Club,

Priory St, Kingswear, Dartmouth, TQ6 0AB
01803 752496 www.royaldart.co.uk



Cover picture by Ingrid Abery Photography, reproduced with permission and thanks. Thanks to all our advertisers and sponsors. Please support them.

Dolphin Boatyard



Dolphin Boatyard welcomes you

WE CAN OFFER :

- STORAGE ASHORE FOR 400 BOATS INCLUDING UNDERCOVER STORAGE
- 65 TONNE TRAVEL HOIST WITH A NEW WAITING PONTOON
- 20 TONNE SLIPWAY HOIST AND ON-SITE MOBILE CRANES
- TRAILER SAILOR AND SELF-LAUNCH OPTIONS
- FULL RANGE OF MARINE SERVICES
- NEW 70 BERTH MARINA
- RANGE OF WORKSHOPS AND STORAGE UNITS FOR RENT
- ON SITE RESTAURANT AND HOLIDAY ACCOMMODATION
- BEAUTIFUL WALKS, MAGNIFICENT GARDENS, AND PLACES TO VISIT



PLEASE CALL IN OR PHONE OR EMAIL US TO RESERVE YOUR SPACE



**Dolphin
Boatyard**
DARTSIDE QUAY

Dolphin Boatyard, Galmpton Creek,
Brixham, Devon, TQ5 0AH
Tel: 01803 842424
Email: ahoy@dolphinboatyard.co.uk



WEDNESDAY EVENING RACING

Date	Event	Start	Race Officer	HW DM BST/Ht
Start Up Series				
9 April	Start Up Race 1	1815	Jiggy	1715/4.1
16 April	Start Up Race 2	1830	Bandit	0850/4.5
23 April	Start Up Race 3	1830	Stren	1511/3.8
The 'Dolphin Boatyard' Race Series 1				
30 Apr	1st Series Race1	1830	Finale	0847/4.9
07 May	1st Series Race2	1830	Olivia	1539/3.8
14 May	1st Series Race3	1830	Exocet	0758/4.5
21 May	1st Series Race4	1830	Free Spirit	1309/3.7
28 May	1st Series Race5	1830	Jiggy	0746/4.8
04 Jun	1st Series Race6	1830	Just Magic	1343/3.7
The 'Darthaven Marina' Series 2				
11 Jun	Ashton Kettle Race	1830	Stren/Off Road	0648/4.3
18 Jun	2nd Series Race2	1830	Hendrika/Mimosa	1144/4.0
25 Jun	2nd Series Race3	1830	Bandit	0639/4.5
02 Jul	2nd Series Race4	1830	Nikita/Eider Duck	1148/3.9
09 Jul	2nd Series Race5	1830	Moondance/Jack	0548/4.1
16 Jul	2nd Series Race6	1830	Yes M'lady	1041/4.3
The 'Baltic Wharf' Series 3				
23 Jul	3rd Series Race1	1830	Sarabande	0532/4.2
30 Jul	3rd Series Race2	1830	Blue Orca/Squiffy	1030/4.3
06 Aug	3rd Series Race3	1830	Leon	1656/4.1
13 Aug	Mike Moody memorial Race	1830	Jubilant	0945/4.6
20 Aug	3rd Series Race5	1830	Ruby Soho	0924/4.6
27 Aug	Dartmouth Royal Regatta: No Evening Racing			
Night Owl Series				
03 Sep	Night Owl Race 1	1830	Finale	1514/3.7
10 Sep	Night Owl Race 2	1815	Just Magic	0845/4.8
17 Sep	Night Owl Race 3	1800	Exocet	1530/3.9

Notes:

All Wednesdays, Tides Dartmouth BST.

Start Times: Class 1 at +00 min: Class 2 at +05 min: Class 3 (Squibs) at +10 min.

Please note earlier start times on 9 April; 3, 10 and 17 September.

Warning Signal: 5 minutes before the Start Time.

COASTAL & JOINT RACES WITH TADCCS

Date	Day	Event	Start	Club	HW BST*	
4 May	Sun	Brixham and Back	Day Race 1	1100	RDYC	1205/3.7
17 May	Sat	BYC Skerries Race BYC		tbc	BYC	
18 May	Sun	Gallon of Rum	Day Race 2	1100	RDYC	1011/4.0
07 June	Sat	RDYC Dartmouth Classics racing in Start Bay				
08 June	Sun					
21 June	Sat	Dart to Yealm	1000	RDYC	1455/4.1	
23 June	Sun	Yealm to Dart	1000	RDYC	1603/4.2	
27 June - 6 July		Torbay Offshore Week			RTYC	
05 July	Sat	Salcombe and Back	Day Race 3	1100	RDYC	1420/3.7
12 July	Sat	BYC 2 stones Race		tbc	BYC	
19 July	Sat	Torquay to Salcombe		tbc	RTYC	
20 July	Sun	Salcombe to Torquay		tbc	RTYC	
28 July - 1 August		Junior Sailing Week		RDYC Junior Sailing Team		
02 August	Sat	Brixham to Salcombe		tbc	BYC	1213/3.8
03 August	Sun	Salcombe to Dartmouth		tbc	BYC	1309/3.7
23 - 25 August		Torbay Royal Regatta			RTYC	
26 August	Wed	Brixham D'tmouth Passage Race		1400	JRSC	0857/4.6
27 - 30 August		Dartmouth Royal Regatta (JRSC)				
7 - 11 September		RDYC Week of Sail (cruise & racing)				
12 September	Fri	Exe Buoy Race			BYC	
13 September	Sat	Bay Race	Day Race 4	1415	RDYC	

* All tide times and heights BST Dartmouth

Colour Key

Race Counts in TADCCS Series	Counts as RDYC Day Race Series	RDYC Special Event	Dartmouth Royal Regatta
------------------------------	--------------------------------	--------------------	-------------------------

Sailing Instructions and Start Times for events organised by other clubs are on the organising club website. TADCCS (Torbay and Dart Combined Clubs Series) count together into one series.

Saturday Races will include Corinthian and IRC Classes (See Pursuit Race NoR Paragraph 4).

CORINTHIAN AND PURSUIT RACES

Party on the Terrace with street food from Mark's Alfresco Kitchen after sailing on the dates marked "Party".

Date	Day	Event	Start	HW BST*
12 April	Sat	Pursuit Race Spring 1	1415	1907/4.6
19 April	Sat	Pursuit Race Spring 2	1415	1019/3.9
26 April	Sat	Pursuit Race Spring 3	1415	1806/4.7
03 May	Sat	Pursuit Race Spring 4 & Party	1415	1101/4.0
07 May	Wed	Corinthian Pursuit Race	1730	1539/3.8
10 May	Sat	RNLI fundraising Race 5	1415	1753/4.4
14 May	Wed	Corinthian Pursuit Race	1730	0758/4.5
17 May	Sat	Pursuit Race Spring 6 & Party	1415	0933/4.1
21 May	Wed	Corinthian Pursuit Race	1730	1309/3.7
24 May	Sat	Pursuit Race Summer 1	1415	1637/4.4
28 May	Wed	Corinthian Pursuit Race	1730	0746/4.8
31 May	Sat	Pursuit Race Summer 2 & Party	1415	1008/4.3
04 June	Wed	Corinthian Pursuit Race	1415	1342/3.7
07 June	Sat	Pursuit Race Summer 3	1415	1623/4.0
11 June	Wed	Corinthian Pursuit Race	1730	0648/4.3
14 June	Sat	Pursuit Race Summer 4 & Party	1415	0852/4.3
18 June	Wed	Corinthian Pursuit Race	1730	1144/4.0
21 June	Sat	Pursuit Race Summer 5	1415	1455/4.1
25 June	Wed	Corinthian Pursuit Race	1730	0639/4.5
28 June	Sat	Pursuit Race Summer 6 & Party	1415	0912/4.5
02 July	Wed	Corinthian Pursuit Race	1730	1148/3.9
05 July	Sat	Pursuit Race Summer 7	1415	1420/3.7
09 July	Wed	Corinthian Pursuit Race	1730	0548/4.1
12 July	Sat	Pursuit Race late Summer 1	1415	0805/4.4
16 July	Wed	Corinthian Pursuit Race	1730	1041/4.3
19 July	Sat	Pursuit late Summer 2	1415	1309/4.0
23 July	Wed	Corinthian Pursuit Race	1730	0532/4.2
26 July	Sat	Pursuit Late Summer 3 & Party	1415	0812/4.6
30 July	Wed	Corinthian Pursuit Race	1730	1030/4.3
02 August	Sat	Pursuit Race Late Summer 4	1415	1213/3.8
06 August	Wed	Corinthian Pursuit Race	1730	1656/4.1
09 August	Sat	Pursuit Late Summer 5 & Party	1415	0706/4.4
13 August	Wed	Corinthian Pursuit Race	1730	0945/4.6
16 August	Sat	Pursuit Race Late Summer 6	1415	1141/4.2
20 August	Wed	Corinthian Pursuit Race	1730	1650/4.2
23 August	Sat	Pursuit Late Summer 7 & Party	1415	0712/4.5

* All tide times and heights BST Dartmouth

CORINTHIAN AND PURSUIT RACES contd

Pursuit Races continue in October and November subject to weather.

“Boxing Day Race” on 27 December subject to demand

Date	Day	Event	Start	HW BST*
03 September	Wed	Corinthian Pursuit Race	1415	1514/3.7
06 September	Sat	Pursuit Race Autumn 1	1415	1810/4.7
07 - 11 September	Royal Dart Week of Sail			
13 September	Sat	Pursuit Race Autumn 2 & Party	1415	1034/4.5
17 September	Wed	Corinthian Pursuit Race	1415	1530/3.9
20 September	Sat	Pursuit Race Autumn 3	1415	1817/4.8
24 September	Wed	Corinthian Pursuit Race	1415	0821/4.8
27 September	Sat	Pursuit Race Autumn 1 & Party6	1415	0940/4.4
01 October	Wed	Corinthian Pursuit Race Autumn 5	1415	1247/3.6
October - December	Pursuit Races continue Wednesdays & Saturdays both at 1415			
27 December	Sat	Day after Boxing Day Pursuit Race	1415	1026/4.3

* All tide times and heights BST Dartmouth

Other Events

Date	Event	Club
30 May-1 June	Torbay Air Show	
07 08 June	Dartmouth Classics	RDYC
14-15 June	BYC Regatta	Brixham YC
27 Jun-6 July	Torbay Offshore Week	Royal Torbay YC
10-13 July	Plymouth Race Week	RWYC
12 July (Sat)	BYC 2 Stones Race	BYC
15 - 19 July Tue	Yacht Club Classique	YCC RDYC YCLB
28 July - 2 August	Junior Sailing Week	JS RDYC
9 August (Sat)	Interclub Dinghy Racing	Dittisham YC
10-15 August	Falmouth Sailing Week	POFSA
23-25 August	Torbay Royal Regatta	RTYC
26-30 August	Dartmouth Royal Regatta	JRSC
07 -11 September	Royal Dart Week of Sail	RDYC
12 September (Fri)	Exe Bouy Race	BYC

RACING DOCUMENTS

Advisory Note: *The Notice of Race contains information competitors may require before racing and the Sailing Instructions are principally an 'on the water' document. In general Rules in the NoR and SI are not duplicated, therefore competitors should read both documents prior to racing. Text in these documents in 'Italics' is advisory.*

Organising Authority.

The Royal Dart Yacht Club is the Organising Authority (OA) for the races specified in the RDYC 2025 Racing Programme except as noted in **Exclusions** below.

Exclusions

The following Notice of Race and associated Sailing Instructions do not apply to Dartmouth Royal Regatta and events organised by other yacht clubs. These events are all subject to separate Notice of Race and Sailing Instructions. The NoR and Sis for Pursuit Races follow.

NOTICE OF RACE (NoR) 2025 (All races except Pursuit Races)

The notation [DP] in a rule in the NOR or SI means that the penalty for a breach of that rule may, at the discretion of the protest committee, be less than disqualification.

The notation [NP] in a rule in the NOR or SI means that a boat may not protest another boat for breaking that rule. This changes RRS 60.1

1. RULES

1.1 All races are governed by the rules as defined in **The Racing Rules of Sailing (RRS)**, including Appendix WP (*Permits the use of a Waypoint instead of a Mark*). Competitors are expected to abide by the RYA Racing Charter.

Advisory note: RDYC Corinthian Class boats race under the RRS and may be in the same area as boats covered by this NoR. Therefore RRS Part 2 rules apply when boats meet.

1.2 The RRS are changed as follows:

1.2.1 RRS63 (Hearings) is amended to allow Arbitration.

1.2.2 RRS Appendix RV, Reduced Visibility, replaces RRS Part 2 from sunset to sunrise.

1.2.3 RRS 52 (Manual Power) shall not apply.

1.2.4 For races started from the club line only: World Sailing Development Rule DR25-01 will be used at the start. The Definition of Start is therefore changed as follows:

Start: A boat starts when her hull having been entirely on the pre-start side of the starting line, and having complied with rule 30.1 if it applies,

any part of her hull crosses the starting line from the pre-start to the course side either:

- (a) at or after her starting signal, or
- (b) during the last one minute before her starting signal.

A boat starting under condition (b) will receive a 2 minute time penalty added to her elapsed time, without a hearing. This changes RRS 63, 35 and A5.

When a boat starts in accordance with item (b) of the definition Start she shall not return to the pre-start side of the line.

1.3 IRC classes:

1.3.1 IRC part C shall apply (advertising permitted)

1.3.2 IRC Rule 22.4 shall not apply; there will be no limitations on crew number or weight.

1.3.3 IRC rule 15.2(d) shall not apply. Stored power may be used for steering in all races.

1.3.4 IRC Rule 8.2.1(c) – a boat shall declare use of a secondary certificate in accordance with IRC.8.2 when entering a series.

1.4 National Squibs shall comply fully with their class rules.

1.5 [NP]Safety Regulations

1.5.1 Safety equipment

(a) Races East of Start Point Squibs, Devon Yawls, Tofinou 7's and other day boats shall comply with their class rules regarding internal buoyancy and safety.

NOTICE OF RACE 2025 cont'd

All other boats shall comply with World Sailing Offshore Special Regulations (OSR) Appendix B for inshore Racing.

OSR Appendix B includes (but is not limited to): Personal flotation to 150N for each crew, bucket, anchor, compass, lifebuoy and heaving line. Boats with electrical systems, cookers or engines must carry fire extinguishers.

Full requirements at <http://www.sailing.org/specialregs>

(b) Races Passing West of Start Point

All boats in Coastal Races shall comply with OSR Category 4 equipment.

Yachts carrying an EPIRB, or a PLB attached to at least one crewmember, may choose to carry an Electronic Visual Distress Signal in place of pyrotechnic flares in accordance with current RYA advice.

OSR Category 4 includes (but is not limited to): Navigation Lights, anchor, VHF Radio, lifelines, 2 fire extinguishers, inflatable personal flotation devices to EN150, Bilge Pump, 2 buckets, flares, foghorn and first aid kit.

1.5.2 Personal Flotation Devices

• RRS 40.1 (*Personal Flotation to be worn*) applies at all times to National Squibs, open decked boats and boats without guardwires.

1.5.3 Engines

All boats shall have a working engine and fuel sufficient to get them back into the river against a foul tide and in the absence of wind, or alternatively their own support team.

2. SAILING INSTRUCTIONS

The Sailing Instructions follow.

3. COMMUNICATION

3.1 The online official notice board is located at: <https://royaldart.co.uk/sail/racing-1/racing-noticeboard>

3.2 Alerts for new postings on the online official notice board and pre-race information will be broadcast on the WhatsApp Group 'RDYC Racing'. Membership of the group can be arranged via racing@royaldart.co.uk.

3.3 VHF radio: All boats shall carry a Marine VHF radio, either permanently installed or a waterproof portable. Boats shall monitor the designated race management channel at all times while intending to, or participating in racing.

3.4 [DP] While racing, except in an emergency, a boat shall not make voice or data transmissions and shall not receive voice or data communication that is not available to all boats.

4. ELIGIBILITY, ENTRY AND FEES

4.1 Races are open to boats entered by a **RDYC full member only**, with the following exception: Coastal Series events are open to members of local clubs subject to completion of the RDYC Online Entry Form no later than 1800 the day before the race.

4.2 All boats competing in any races in this programme shall complete an online Race Entry Form no later than 1st April 2025. The link to the online form is available from the RDYC website.

4.3 All boats shall, by entering any race, confirm their acceptance of and compliance with the Notice of Race and understanding of the Safety Briefing Appendix (which follows).

4.4 There are no race fees.

5. CLASSES, HANDICAPS AND SERIES

5.1.1 The Racing Committee will allocate boats to Class 1 or 2 at its discretion. Race results will be calculated using IRC ratings. An additional result may be calculated using TCF-Golf.

5.1.2 IRC Non-Spinnaker

A boat may declare herself 'Non-spinnaker' and race under her non-spinnaker TCC for a series by advising the Sailing Committee before the first race in that series.

A boat may declare herself 'Non-spinnaker' for a race, and obtain a time allowance, provided she declares 'Non-spinnaker' on the 'RDYC Racing' WhatsApp group before the warning signal. The Non-spinnaker time allowance shall be 1 minute for races in Start Bay and 3 minutes for Coastal races.

5.1.3 Class 1 Double-handed Division

A boat can qualify for the double-handed division for a series by notifying the Race Committee that it intends to race double-handed for that entire series.

Double-handed boats will also qualify for the fully crewed series.

5.1.4 Boats without an IRC Rating will be allocated to Class 1 or 2 at the Racing

Committee's discretion. Their results may be calculated using the TCF-Golf, but will not be eligible for series trophies.

5.2 Class 3

Will comprise Squibs and any similar boats which are below the 5m minimum length for IRC.

Race results for Class 3 will comprise:

- Separate class results for Squibs.
- An overall result based on PY or its local equivalent.
- An additional result may be calculated using TCF-Golf.

5.3 TCF-Golf

- Yachts will start with the handicap determined by Halsail from races in 2022.
- Handicaps for Wednesday racing will be revised on completion of each Wednesday series as indicated by Halsail.
- New boats will start with their IRC rating until enough races have been completed to allow a fairer handicap.
- Boats with no rating will start with an estimated rating until enough races have been completed to allow a fairer handicap.

5.4 Combined Results for a Series with Insufficient Entries.

Class 1, 2 and 3 results may be combined into a single IRC and a single TCF-Golf result where entries in a series are insufficient to warrant separate class results.

6. CREW LIMITATIONS

- IRC: see NoR 1.3.2
- National Squib: see NoR 1.4
- Class 1 Double-handed Division – One helmsman plus one crew permitted.

7. ADVERTISING

Advertising may be displayed in accordance with the World Sailing Advertising Code.

8. SCHEDULE

The schedule of Races can be found in the **Racing Programme** on the RDYC website <https://royaldart.co.uk/racing>.

9. VENUE

The racing venue is Start Bay and the River Dart. For the Coastal Series the venue is extended to include coastal waters between Teignmouth and Plymouth.

10. COURSES

Courses are described in the Sailing Instructions Course Appendix.

11. SCORING

11.1

- One race is required to be completed to constitute a series.
- Wednesday Series: One discard will be allowed if four or five races are completed and two discards if six, seven or eight races are completed.
- Day Race, Autumn and Frostbite Saturday Series: 50% of completed races rounded up shall count.
- Overall series, where more than one series are combined into a result, 50% of completed races rounded up shall count.

11.2 RRS Appendix A5.3 shall apply to all series.

11.3 Results will be posted on the RDYC website <https://royaldart.co.uk/racing-results>.

11.4 When an owner acts as Race Officer and, as a consequence, his boat is unable to compete, the boat will be scored her average points (less discards) for that series. (*This is entered as 'RDG Av excluding DNC' on the HAL system.*)

12. DATA PROTECTION

The personal information you provide to the organising authority will be used to facilitate your participation in the event. If you have agreed to be bound by the Racing Rules of Sailing and the other rules that govern the event (the rules), the legal basis for processing that personal information is contract. If you are not bound by the rules, the legal basis for processing that personal information is legitimate interest. Your personal information will be stored and used in accordance with the organising authority's privacy policy. When required by the rules, personal information may be shared with the RYA, your national authority and/or World Sailing. The results of the event and the outcome of any hearing or appeal may be published.

13. RIGHTS TO USE THE NAME AND LIKENESS

By participating in any race in the schedule, competitors automatically grant to the organising authority the right to make use and show, at their discretion, any photograph, audio and video recordings and other reproduction of them made before, during or after such race, without compensation.

NOTICE OF RACE 2025 cont'd

14. RISK STATEMENT: ALL CREW SHALL READ THIS STATEMENT

Rule 3 of the Racing Rules of Sailing states:

“The responsibility for a boat’s decision to participate in a race or to continue racing is hers alone.”

Sailing is by its nature an unpredictable sport and therefore inherently involves an -element of risk. By taking part in the event each competitor acknowledges that:

- a. They are aware of the inherent element of risk involved in the sport and accept responsibility for the exposure of themselves, their crew and their boat to such inherent risk while taking part in the event:
- b. They are responsible for the safety of themselves, their crew, their boat and other property when afloat or ashore:
- c. They accept responsibility for any injury, damage or loss to the extent caused by their own actions or omissions:
- d. Their boat is in good order, equipped to sail in the event and they are fit to participate:
- e. The provision of a race management team and other officials and volunteers by the event organiser does not relieve them of their own responsibilities.
- f. Patrol boats and safety boats are not provided.
- g. It is their responsibility to familiarise themselves with any risks specific to this venue or this event drawn to their attention in any rules and information produced for the venue or event and to read the Safety Briefing on which follows.
- h. For offshore races they are responsible for ensuring that their boat is equipped and seaworthy so as to be able to face extremes of weather: that there is crew sufficient in number, experience and fitness to withstand such weather: and that the safety equipment is properly maintained, stowed and in date and is familiar to the crew.

15. INSURANCE

Each participating boat shall be insured with valid third-party liability insurance with a minimum cover of £3 million per incident or the equivalent.

16. PRIZES

Prizes will be awarded to the winner of each series and may also be awarded to second and third places.

17. RACE OFFICER DUTY

Competing boats shall be prepared to supply a team to start and manage a race. Allocations for duties are in the **Sailing Programme**.

If a boat is unable to fulfil her duty, in the first instance she shall try to arrange a swap with another boat. If a swap is not possible, contact the RDYC office for assistance.

Inexperienced race teams may contact the RDYC office to request help.

18. RDYC WEBSITE

Copies of this Notice of Race, Sailing Instructions and entry forms are on the RDYC website (<https://royaldart.co.uk/sail/racing-1/racing-information>). In the event of a discrepancy the printed version as amended by any changes to the Sailing Instructions posted on the online official notice board shall be the definitive version.

(Regatta documents are on Dartmouth Royal Regatta Sailing Week website <http://www.dartmouthsailingweek.com/>)



*Many decades of experience
in the fabrication, repair and construction
of GRP & composite structures*

**All Repairs & Maintenance | Insurance Repairs
Coatings Above & Below the Waterline
Keels & Rudders | Bespoke Stainless Steel Work
Skin Fittings and much more**



**Dolphin Boatyard, Galmpton, TQ5 0EH | Tel: 01803 867 474 | Mob: 07779 022708
Email: dave@dartsideboatworks.co.uk | Web: dartsideboatworks.co.uk**

01803 839196

Dart Sails and Covers

www.dartsailsandcovers.co.uk

Friendly, professional advice with excellent service

Specialists in all things sails and covers

We create, maintain, refurbish and repair
with service packages to suit all

Please contact us for details

SAILING INSTRUCTIONS

(These SI apply as defined in the preceding NoR)

1. RULES

All races are governed by the rules as defined in **The Racing Rules of Sailing** (RRS).

2. CHANGES TO SAILING INSTRUCTIONS

2.1 Changes to the sailing instructions will be posted on the online official notice board at least one hour prior to the scheduled start time of the first race to which the change applies, with an alert on the 'RDYC Racing' WhatsApp group. Flag L will not be displayed – this changes RRS Race Signals.

2.2 Changes to Sailing Instructions may be made on the water by communicating verbally or on VHF radio by the race committee in accordance with RRS 90.2(c).

3. COMMUNICATIONS WITH COMPETITORS

3.1 On the water, the race committee intends to monitor and communicate with competitors on VHF radio channel 37a (M1).

If the race committee boat displays flag L, this informs competitors that an alternative VHF channel will be used. This adds to the meaning of flag L in Race Signals.

Failure to receive any transmission shall not be grounds for redress. This changes rule 61.1(a).

3.2 The following communications will be made by VHF radio:

- Course information
- Time checks
- Changes to starting sequences

3.3 The following communications may be made by VHF radio:

- Mandatory requirement to wear a personal flotation device.
- Changes to Sailing Instructions.
- Starting signals, recalls, postponement, shorten course and abandonment signals.

3.4 Visual signals may not be used - This changes RRS26, RRS29 and Race Signals.

4. CODE OF CONDUCT

[DP] Competitors and support persons shall comply with reasonable requests from race officials.

5. SIGNALS MADE ASHORE

The following pre race flag signals may be displayed on the RDYC signal mast:

Flag H (with individual class flag(s) where appropriate) - All or designated classes will start from the RDYC club line.

Flag Y – personal flotation devices to be worn – see also NoR 1.5.2

Flag N over A (and class flags where appropriate) – Races for all or designated classes are abandoned.

6. SCHEDULE OF RACES

6.1 The schedule can be found in the Racing Programme <https://royaldart.co.uk/racing>.

6.2 Start times for the first start are in the Racing Programme. (*Note the early start times for Wednesday Evening races at each end of the season*).

6.3 Wednesday Evening starting sequence (except the Start Up series)

Start Order	Class	Class Flag	Time after first start
First	Class 3/Squibs	NP 3/NN 9	0
Second	Class 2	NP 2	+5 mins
Third	Class 1	NN 1	+10 mins

A general recall, or postponement, may cause the starting interval to be extended. Class(es) subject to a general recall shall start in sequence after the last scheduled start.

6.4 Wednesday Start Up and CoastalSeries: All classes will start together.

7. CLASS FLAGS

7.1 See table in SI 6.3.

7.2 Boats other than Squibs shall display their class flag on their backstay (or close to the stern if no backstay available).

Advisory note:

For identification purposes, RDYC Corinthian class boats will display Numeral 5 – see NoR1.1.

8. COURSES, MARKS AND RESTRICTED AREAS

8.1 Courses will be selected from those given in the Courses Appendix.

<https://royaldart.co.uk/sail/racing-1/racing-information>

8.2 Marks are described in the Courses Appendix.

8.3 Restrictions in the Racing Area are defined in Section 4 of the Courses Appendix. Other hazards to navigation exist and safe navigation is the sole responsibility of a boat's crew.

9. THE START

9.1 Races will be started using RRS 26 with the warning signal made 5 minutes before the starting signal.

9.2 Starting arrangements are given in the Courses Appendix.

9.3 When a race committee boat is not available, a designated RDYC competitor will act as the starting boat by broadcasting a time check, course and RRS26 times on VHF Ch M1 (37a). Visual and sound signals will not be made. This changes RRS26, RRS29 and Race Signals.

9.4 For races involving a series of starts only, a boat that does not start within four minutes after her starting signal will be scored Did Not Start without a hearing. This changes RRS A5.1 and A 5.2

Advisory note: if the majority of boats have not started after 4 minutes, the RO may Abandon and restart the race – see RRS32.1(d)

10. THE FINISH

10.1 Finishing arrangements are given in the Courses Appendix.

10.2 When a race committee boat is not available at the finish, boats shall note their own finish time using GPS time. Where practicable, boats ahead and astern shall be noted. Times shall be advised by email to racing@royaldart.co.uk or WhatsApp as soon as possible after finishing.

11. POST-RACE PENALTIES

A post race penalty shall be a boat's score made worse by three points, but not worse than Did Not Finish. This changes RRS44.3(c)

12. TIME LIMIT (Changes rule 35)

The following time limits shall apply:

Series	Time Limit	Extension
Wednesday	20:15	30 minutes, i.e. to 20:45
Round the Cans Day Race	3 hours	1 hour, i.e. to 4 hours
Autumn	3 hours	1 hour, i.e. to 4 hours
Frostbite	2 hours	30 minutes, i.e. to 2½ hours
Coastal	Specified in 'Courses for Coastal Series'	

SAILING INSTRUCTIONS cont'd

The extension shall apply if at least one boat in that class has finished within the time limit. The Race Officer may, before the start, impose an earlier time limit with a shorter or no extension if conditions require it, (e.g. *the time limit or it's extension would be after sunset*). If no boat finishes within the time limit, or the Race Officer decides that it is unlikely that any boat will finish within the time limit, the race may be retrospectively shortened by an announcement on VHF and times for completion of the previous lap may be used to determine results.

13. HEARING REQUESTS

13.1 The protest time limit is two hours after the last boat has finished the race of the day.

13.2 Hearing request forms are available from the online notice board or on request from the sailing committee.

13.3 Notices will be posted on the online notice board no later than 30 minutes after the protest time limit to inform competitors of hearings in which they are parties or named as witnesses.

13.4 When a protest is lodged, a boat may at the same time request RYA Arbitration.

SAFETY BRIEFING APPENDIX to Notice of Race and Sailing Instructions

a) All crew must read and acknowledge understanding of the NoR Risk Statement.

b) The person in charge of the boat and their deputy shall be identified to the crew before participating in racing.

c) Coastal hazards to navigation exist in the racing area(s). Safe navigation of the boat is the crews' responsibility.

d) Competitors are reminded that patrol boats are not provided; therefore it is a condition of racing that all RDYC boats shall carry a VHF radio and a means of returning to the river (i.e. an engine or support boat).

e) The safety equipment for the intended race area shall be identified. All equipment must function properly, be regularly checked, be suitable for the size and intended use of the boat, and the crew appropriately trained in its use.

f) In the first instance, a yacht shall try to rectify a minor safety incident itself, without recourse to external help.

g) If the safety incident cannot be rectified immediately by the boat itself, and always in the event of a man overboard, the yacht shall call for help, e.g. by VHF radio Channel 37a (M1).

h) All competitors are bound to render assistance on receipt of such a call in

compliance with RRS Rule 1.1.

(Yachts rendering assistance will be entitled to claim redress (RRS Rule 62.1(c)).

i) If the victim yacht decides that help from another yacht is unlikely to rectify the situation, or help is not forthcoming, then the yacht shall escalate the situation by calling the Coastguard on Channel 16. A MAYDAY should be used if there is imminent danger to life. A Pan-Pan (urgency) call is appropriate to inform the coastguard of the problem and what you are doing about it and will speed the response if you later issue a MAYDAY.

j) If a casualty has to be transferred ashore, unless instructed otherwise, the best access to the shore/ambulance is the inner visitors' pontoon at Darthaven. If giving directions to the ambulance service, postcode **TQ6 OSG** can be used. The Harbour Master has a reserved space here which is kept vacant. DHNA river officers are on duty (until 1900 in April and October and 2300 between May and September) and can be contacted on Channel 11 to help with berthing.

k) A fuller Safety Briefing with examples of Safety Incidents and their resolution, can be found on the RDYC website: <https://royaldart.co.uk/media/files/site/Safety-Briefing.pdf>.

ADDITIONAL SIs FOR COASTAL SERIES

1. RACE CONTROL, RDYC REPRESENTATIVE AND VHF RADIO COMMUNICATION

1.1 There will be a single start for Class 1 and Class 2.

1.2 A designated RDYC competitor will act as the starting boat by broadcasting a time check and RRS26 times on VHF Ch M1 (37a). Visual & sound signals will not be made - This changes RRS 26 and Race Signals. Failure to receive any transmission shall not be grounds for redress. This changes RRS 61.1(a).

2. SELF-TIMING, TIME LIMITS, REPORTING TIMES

2.1 Boats shall record their finishing time using GPS time. Where practicable, boats ahead and astern shall be noted.

2.2 Time limits are specified in the Courses Appendix. The time limit will be extended by two hours if one or more boats finish the course within the time limit - This changes RRS 35.

2.3 Finishing times shall be notified no later than 14:00 on the Monday following the race by one of the following means:

- email to racing@royaldart.co.uk
- 'RDYC Racing' WhatsApp group
- Telephone RDYC office (01803 752496)
- Direct to the RDYC representative by VHF or Text Message.

3. HEARING REQUESTS

Protests forms must be handed to the RDYC representative, or notified to the RDYC office by e mail or telephone by 14:00 on the Monday following the race.

4. RESULTS AND PRIZES

Results will be displayed on the RDYC website <https://royaldart.co.uk/racing-results>. Prizes will be awarded to the winning yacht and subsequent places at the sailing committee's discretion.

NOTICE OF RACE (NOR) PURSUIT RACES 2025

The Pursuit race series on Saturdays and Wednesdays are designed as a less formal style of racing in the Corinthian spirit. That is to say that allowances shall be made for shorthanded and less nimble craft, close quarters manoeuvring is avoided, and any disagreements are settled amicably.

1. RULES

1.1 The event is governed by the rules as defined in The Racing Rules of Sailing.

1.2 'White Sail' configuration is defined as sails complying with the boats 'Upwind Sail Area'.

2. COMMUNICATION

2.1 All boats shall carry a marine VHF radio.

2.2 Pre-race information may be broadcast on the WhatsApp group 'Corinthian Racing'. Membership of the group can be arranged via R. Balfry or C. Mackie.

2.3 On the water, racing information, e.g. the course to be sailed, will be broadcast on VHF radio. The channel will be stated in the SIs.

3. ELIGIBILITY, ENTRY AND FEES

3.1 Races are open to all RDYC full members.

3.2 All boats competing in any races in this programme shall complete an online Race Entry Form no later than 1800 on the day before their first race. The link to the online form is available from the RDYC website. Early completion before 1st April 2025 would be appreciated.

3.3 All boats shall, by entering any race, confirm their acceptance of and compliance with the Safety

NOR FOR PURSUIT RACES cont'd

Requirements in section 1.5 of the general Notice of Race and understanding of the Safety Briefing (which follows).

3.4 Boats without an IRC will be allocated a suitable RDYC club handicap by the organisers.

3.5 There are no race fees.

4. CLASSES AND HANDICAPS

4.1 The Pursuit Races will have 2 divisions:

- IRC using IRC ratings to determine start times
- Corinthian using RDYC club handicap to determine start times

4.2 IRC Class start times will assume 'Spinnaker' configuration. Boats may opt to sail 'White Sail' and start 1 minute before their designated start time.

4.3 Corinthian Class boats are restricted to 'White Sails Only'

4.4 Corinthian Class crew shall remain in the cockpit, except briefly to perform a necessary task (this changes rule 49.2).

5. SCHEDULE OF RACES

The schedule can be found in the Racing Programme.

6 COURSES

Courses are described in the Pursuit Race Course Appendix.

7. PENALTY SYSTEM

Rule 44.1 applies. (One turn and two turn penalties may be taken).

8. SCORING

8.1 50% of completed races rounded up shall count in a series.

8.2 Results will be posted on the RDYC Website <https://royaldart.co.uk/racing-results>.

9. MANUAL POWER

9.1 RRS 52 shall not apply (Auto pilots and electric winches are permitted).

10. Data Protection

Section 13 of the above Notice of Race applies.

11. Rights to Use Name and Likeness

Section 14 of the general Notice of Race applies.

12. Risk Statement:

All crew shall read the statement in section 15 of the Notice of Race.

13. INSURANCE

Each participating boat shall be insured with valid third-party liability insurance with a minimum cover of £3 million per incident or the equivalent.

14. PRIZES

Prizes may be awarded.

SAILING INSTRUCTIONS FOR PURSUIT RACES

1 CHANGES TO SAILING INSTRUCTIONS

1.1 Changes will be advised on the 'Corinthian Racing' WhatsApp group.

1.2. Changes may exceptionally be made on the water by communicating verbally or on Channel 72 by the duty boat.

2 COMMUNICATIONS WITH COMPETITORS

2.1 On the water, the race committee intends to monitor and communicate with competitors on VHF radio channel 72. Alternative channels may be used to avoid interference.

2.3 The following communications may be made:

- Course information
- Mandatory requirement to wear personal flotation devices.

2.4 Flag signals will not be used.

3 SIGNALS MADE ASHORE

3.1 Pre-race information such as postponement or abandonment will be communicated on the 'Corinthian Racing' WhatsApp group.

4. SCHEDULE OF RACES

4.1 The schedule can be found in the **Racing Programme**. The start times shown are for the scratch boat.

4.2 Pursuit Race Procedure.

4.2.1 Race duration is specified on the Start Times List. *Note that Saturday and Wednesday races may have different durations.*

4.2.2 Entrants will be allocated a start time based on their IRC or RDYC Club Handicap. *Note that boats will have Wednesday and Saturday start times.*

4.2.3 Start times will be listed on the RDYC website and broadcast on the 'Corinthian Racing' WhatsApp group.

4.2.4 The Duty Boat will announce the course at least 10 minutes before the first start.

4.2.5 The Duty Boat may decide that conditions are unsuitable for racing and cancel or abandon racing.

4.2.6 Yachts will start at, or after, their start time.

4.2.7 Yachts will sail the designated course until the finish time is reached.

4.2.8 When the race is complete, yachts shall note sail numbers of the boat behind and the boat in front and also record their GPS position. This data to be communicated on the 'Corinthian Racing' WhatsApp group.

4.2.9 If there is doubt over a position, the distance to the next mark shall be used.

5 CLASS FLAGS

5.1 Corinthian competitors shall fly NP 5 to identify them as racing. Ensigns shall not be worn.

6 COURSES, MARKS AND RESTRICTED AREAS

6.1 Courses, marks and restricted areas are described in the Courses Appendix

6.2 Coastal hazards to navigation exist in the racing area. Safe navigation of the yacht is the crews' responsibility.

7 PENALTY SYSTEM AFTER FINISHING

RRS Appendix T1 applies.

8. HEARING REQUESTS

Section 13 of the general Sailing Instructions applies.

COURSE APPENDIX 2025

Courses for Start Bay races are shown first, then by Pursuit Race Courses, followed by courses for the Coastal Series. Words in italics are advisory and do not constitute part of the Course Instructions.

Yachts should listen on VHF Ch M1 (37a) for course instructions, changes to SI and starting instructions. Exceptionally VHF Ch 72 may be used.

1. Signalling the course: Listed Courses

The course will normally be communicated by VHF Ch M1 (37a). An alternative, usually Ch 72, may be used. The course may be changed between successive starts. Exceptionally the course may be displayed by boards showing the Class(es), followed by course letter and number.

2. Alternative courses

An alternative course should only be used if no listed course is satisfactory. Describe the start line, each mark and its rounding direction in sequence and the finish line.

Exceptionally, boards indicating the individual marks to round in order may be used.

A red board indicates leave to port: a green board indicates leave to starboard.

3. Start and Finish Lines

Blackstone Point (BP) Prolongation of the line joining the two white flag staffs at Blackstone Point, with Castle Ledge Buoy as the Outer Distance Mark (ODM).
If a committee boat is present, it will be positioned as the inner distance mark and the line will be between the boat and Castle Ledge.

Committee Boat (CB) Between the main mast of the Committee Boat and the ODM, which is the nearest adjacent mark. When a mark forms part of the Start or Finish Line it is omitted as a rounding mark on that leg.

RDYC Club Line (CL) The transit of the RDYC Flagpole and outermost downriver pontoon pile. An orange tetrahedral or spherical ODM may be laid.

4. Restrictions on Sailing Area

While racing, boats shall not pass between any of the following and the shore: Western Blackstone Rock, Mew Stone Rocks, Combe Rocks, Dancing Beggars Rocks, Cod Rock (off Berry head) and Blackstone Rock (off Start Point).

West Rock Buoy (R) shall be passed to seaward EXCEPT when it is used as a rounding mark.

When West Rock Buoy (R) is used as a mark of the course, boats should stay close to it when rounding as the West Rock is awash at low tide and lies about 200m NW of the buoy.

Boats must keep clear of all ferries at all times.

5. Mark Rounding

5.1 Direction of Rounding - 's' means leave or round mark to starboard, 'p' to port.

5.2 All marks are rounding marks except H which may be a passing mark on certain courses.

6. Shorten Course

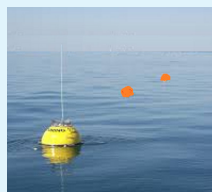
In Course Groups A - F the Shorten Course will finish at the mark shown in red with square brackets.

However, if conditions require it a Committee Boat may take up station at any mark of the course and announcing Shorten Course on VHF by flying the Shorten Course signal to finish.

7. Marks and approximate positions (WGS84) - see page 22 for Map

ODM	Nearest mark to the CB	(which may be H, L, C, T, Y, Z, 1, 2, 3, 4)
H	Homestone, red can buoy	50d 19.61'N, 3d 33.55'W
M	Mewstone Buoy, south cardinal buoy	50d 19.92'N, 3d 31.89'W
R	West Rock Buoy, south cardinal buoy	50d 19.86'N, 3d 32.47'W
L	Castle Ledge Buoy, green conical buoy	50d 19.99'N, 3d 33.11'W
C	Checkstone, red can buoy	50d 20.45'N, 3d 33.81'W
X	Yellow 6 knot buoy	50d 20.30'N, 3d 33.3'W
	<i>(off Wash Point, N of Newf'nd Cove)</i>	
Y	Yellow 6 Knot buoy	50d 19.98'N, 3d 33.66'W
	<i>(due N of Homestone, close to W. Blackstone)</i>	
1	RDYC 1, yellow conical buoy with number	50d 19.11'N, 3d 34.49'W
2	RDYC 2, yellow conical buoy with number	50d 18.7'N, 3d 33.4'W
3	RDYC 3, yellow conical buoy with number	50d 19.0'N, 3d 32.5'W
4	RDYC 4, yellow conical buoy with number	50d 19.6'N, 3d 32.4'W
T	Temporary orange tetrahedral or lozenge buoy	<i>may also replace X or Y</i>
T1	Temporary orange tetrahedral or lozenge buoy	<i>near Kingswear Castle</i>
T2	Temporary orange tetrahedral or lozenge buoy	<i>laid upriver</i>
S	Skerries, red can buoy	50d 16.3d'N, 3d 33.78'W
W	Wave Buoy (3m SW of Home)*	50d 17.50'N, 3d 36.97'W

***The wave buoy** (pictured) has 2 associated orange floats which may lie 30m from the buoy itself. These floats shall be considered an extension of the Wave Buoy and rounded accordingly.

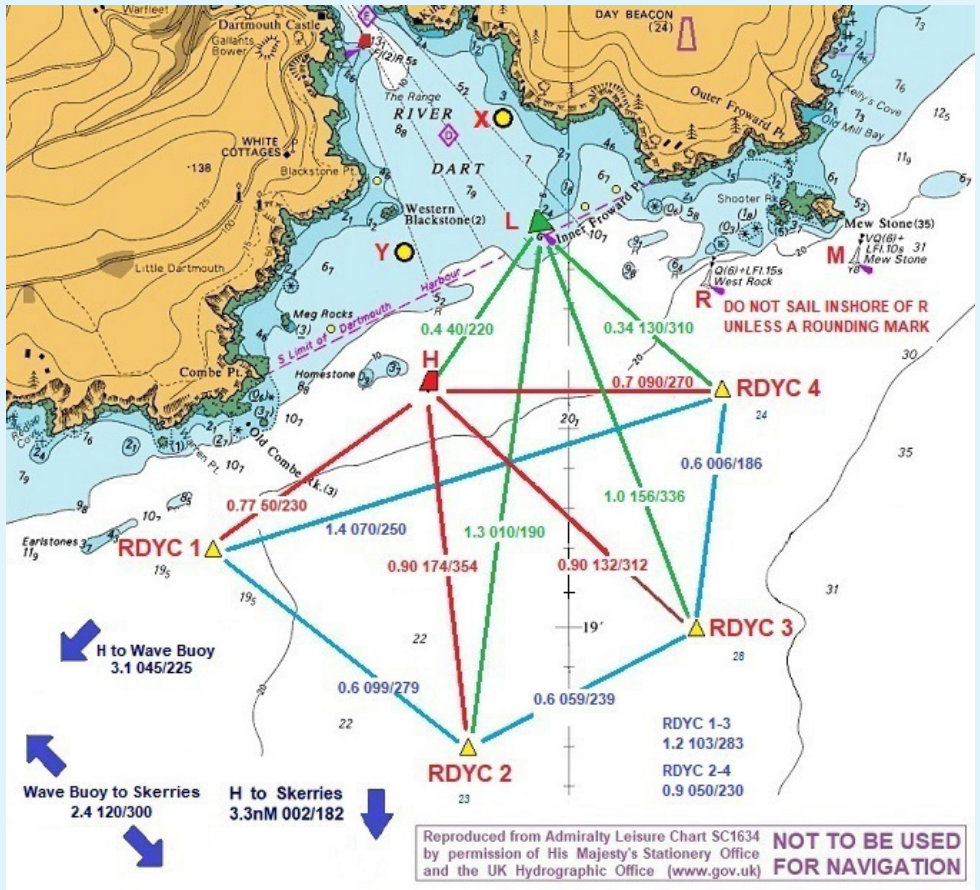


WM (Windward Mark) and **LM** (Leeward Mark) as designated by VHF for A9 Course.

WM and LM may be temporary laid orange marks or fixed marks.

Marks laid in the river near the Club Line need an extension mooring line.

COURSE MAP (Inshore Buoys)



Course Groups for different classes and conditions

Series	Class 1	Class 2 & 3	Combined Classes	Light Winds
Wednesday Races With CB and Marks in place	Group A	Group B	Group B	Group C
Wed Race with Very light wind only in river				Group R
Wed Race with CB and Cruise liner due to leave				Group Z: See RO Manual
Wed or Sat Races no CB	Gp D (long)	Group B	Group E	Group F
Pursuit Races Wednesday and Saturday (All classes)	Club Marks in Place: CT		No Club Marks: WT	

COURSES IN START BAY & RIVER DART

Course Group advice to Race Officers.

A & B: Normal Inshore Courses with a committee boat.

A courses are longer courses for Class 1. **B** courses are shorter ones for Class 2 and Class 3. The Shorten Course will finish at the mark shown in red and square brackets. Shorten course length in brackets. Information in *Italics* is advisory only.

1.	Wind South West	
A1	Start at L 1p 2p [Lp] 1p finish at L	5.8 (3.3) NM
B1	Start at L 1p 2p [Lp] Hp finish at L	4.3 (3.3) NM
2.	Wind South	
A2	Start at L 2s 1s [Hs] Ls 2s finish at H	5.7 (3.0) NM
B2	Start at L 2s 1s [Hs] 2s finish at H	4.9 (3.0) NM
3.	Wind South East	
	<i># Start between 'T' and Committee Boat placed NW of Home to create a longer beat</i>	
A3	Start at T 3s 1s Ts [Hs] 3s finish at H	5.8 (3.7) NM
B3	Start at T 3s Ts [Hs] 3s finish at H	4.5 (2.7) NM
4.	Wind East	
	<i># Start between 'T' and Committee Boat placed W of Home to create a longer beat.</i>	
A4	Start at T 4s 3s Ts [Hs] 4s Ts finish at H	5.0 (3.0) NM
	<i>If swell severe consider E4/F4. Start on BP line, CB if present is ODM.</i>	
5.	Wind North East	
A5	Start at H Ls 3s 1s [Hs] Ls 1s finish at H	6.2 (3.6) NM
B5	Start at H Ls 3s 1s [Hs] 1s finish at H	5.1 (3.6) NM
6.	Wind North	
A6	Start at H Yp 1p 2p [Hp] Yp 2p finish at H	5.5 (3.0) NM
B6	Start at H Yp 1p 2p [Hp] 2p finish at H	4.9 (3.0) NM
7.	Wind North West	
	<i># 'T' placed NW of Home to give a short first windward leg.</i>	
A7	Start at H Tp 1p 3p [Hp] Tp 3p finish at H	5.7 (3.3) NM
B7	Start at H Tp 2p 3p [Hp] 3p finish at H	4.9 (3.0) NM
8.	Wind West	
	<i># 'T' placed W of Home to create a longer beat. May use Course A8X, 1 instead of 'T'.</i>	
A8	Start at 4 Tp 2p 4p [Hp] Tp 4p finish at H	5.8 (3.8) NM
A8X	Start at 4 1p 2p 4p [Hp] 4p finish at H	5.5 (3.8) NM
B8	Start at 4 Hp 3p 4p [Hp] 4p finish at H	4.5 (3.0) NM
9.	All Directions: Windward - Leeward Course	
	CB start line at Leeward Mark (LM). Windward Mark (WM) advised by VHF.	
A9	Start at LM, repeat lap WMP Lmp until shorten course signal, finish at [LM]	

C: Short Inshore Courses with a Committee Boat, for light winds

C courses must be used for all classes as start and finish lines may not be compatible with A and B courses.

1.	Wind South West		
C1	Start at H 1p 2p [Hp] 1p finish at H		4.2 (2.6) NM
2.	Wind South		
C2	Start at H 2s 1s [Hs] 2s finish at H		4.4 (2.6) NM
3.	Wind South East		
C3	Start at H 3p 4p [Hp] 3p finish at H		4.0 (2.2) NM
4.	Wind East		
C4	Start at H 4s 3s [Hs] 4s finish at H		3.7 (2.2) NM
5.	Wind North East		
C5	Start at H Ls 3s Hs [Ls] Hs finish at L (can also finish at H)		4.0 (3.0) NM
6.	Wind North		
	# T placed N of Homestone		
C6	Start at H Tp 2p [Hp] 2p finish at H		4.3 (2.4) NM
7.	Wind North West		
	# T placed NW of Homestone		
C7	Start at H Tp 3p [Hp] 3p finish at H		4.2 (2.4) NM
8.	Wind West		
C8	Start at 4 Hp 3p [4p] Hp finish at 4 (can also finish at H)		3.7 (2.2) NM

D: Longer Courses (with no committee boat)

D Courses may be used for longer pursuit races. These courses only have a single lap. If a longer race is required, then Castle Ledge shall be left to Starboard and the first lap repeated.

1.	Wind South West		
D1	Start at BP Wp Sp finish at BP		9.7 NM
2.	Wind South		
D2	Start at BP Ss Ws finish at BP		9.7 NM
3.	Wind South East		
D3	Start at BP 3s 1p Sp finish at BP		9.2 NM
4.	Wind East		
D4	Start at BP Wp Sp finish at BP		9.7 NM
5.	Wind North East		
D5	Start at BP Ss Ws finish at BP		9.7 NM
6.	Wind North		
D6	Start at BP Wp Sp finish at BP		9.7 NM
7.	Wind North West		
D7	Start at BP Ss Ws 4p finish at BP		9.7 NM
8.	Wind West		
D8	Start at BP Ss Ws finish at BP		9.7 NM

E & F: Inshore Courses with no committee boat

E courses are for all Classes in the Wednesday, Day Race and Frostbite series in steady winds.

F courses are for all Classes in the Wednesday, Day Race and Frostbite series in light winds.

All races start and finish on BP line. CB if present is ODM.

When a Shorten Course has been broadcast (VHF Ch M1 (37a)), finish on the BP line as the boat approaches the mark in Red and Square Brackets which becomes the ODM and is left to Starboard.

1. Wind South West		
E1	Start at BP 1p 2p [Lp] 1p finish at BP	5.9 (3.4) NM
F1	Start at BP 1p 2p [Lp] Hs finish at BP	4.3 (3.4) NM
2. Wind South		
E2	Start at BP 2s 1s [Ls] 2s finish at BP	6.0 (3.4) NM
F2	Start at BP 3s Hs [Ls] 3s finish at BP	4.7 (2.4) NM
3. Wind South East		
E3	Start at BP 1p 2p [Lp] Hp 3p finish at BP	6.0 (3.8) NM
F3	Start at BP Hp 3p [Lp] Hp 3p finish at BP	4.7 (2.5) NM
4. Wind East		
E4	Start at BP 1p 3p [Lp] Hp 4p finish at BP	5.4 (3.5) NM
F4	Start at BP Hp 4p Hp 4p [Lp] Hp 4p finish at BP	4.9 (3.0) NM
5. Wind North East		
E5	Start at BP 1p Hs 2p 4p [Lp] Hs finish at BP	5.6 (4.6) NM
F5	Start at BP 2p 4p [Lp] Hs finish at BP	4.0 (3.0) NM
6. Wind North		
E6	Start at BP 2p [Ls] 4s 2s finish at BP	5.7 (2.6) NM
F6	Start at BP 2p [Ls] 4s 3s finish at BP	4.9 (2.6) NM
7. Wind North West		
E7	Start at BP 2s 1s 3p [Ls] 4s finish at BP	5.7 (4.5) NM
F7	Start at BP Hp 3p Hs 4p [Ls] 4s finish at BP	4.9 (3.7) NM
8. Wind West		
E8	Start at BP 3s 1s [Ls] 4s Hs finish at BP	5.4 (3.6) NM
F8	Start at BP Hp 4s Hs [Ls] 4s Hs finish at BP	4.2 (2.5) NM

Z: Courses using Buoys H, 1, 2, Y and T

These courses are designed to be used when a cruise ship is scheduled to leave the river during racing.

The course will be communicated on VHF 37 (M1) and may not have a windward start. All boats **must** keep clear of the fairway, east of Buoys Y and H while the ship is exiting the river.

R: River Courses

For use when there is either no wind, fog or heavy weather in the range.

River courses may be run from the RDYC Terrace or a Committee Boat.

Courses must not be set which involve racing through the ferry tracks.

In fog, races should be abandoned if visibility is less than the width of the river at the Club Line.

Sea Breeze Course and Strong NW Breeze

In sea breeze conditions, the best wind is found between the club and Dartmouth Castle. Lay T1 on the inland side of Dartmouth Castle as the wind in the entrance is inconsistent.

In strong winds, Class1 are prohibited from using spinnakers in the river. The race officers decision will be final.

T1 laid near Kingswear Castle, T2 just downstream from CL.

R1 Start on CL T1p Lap (T2p T1p) finish on CL. Wind SE

Repeat the Lap until the Shorten Course is signalled.

Breeze further up the river

Set the CB start line opposite yellow Ship Buoy MS1 and lay T2 well clear downstream of the Higher Ferry. **All boats must keep clear of the ferries at all times.**

R2 Start at MS1 Lap (T2p MS1p) finish at MS1.

Repeat the Lap until the Shorten Course is signalled.

Simultaneous use of Blackstone Point Line and Club Line on VHF Ch 77.

In heavy weather at the race officer's sole discretion, a Class 1 boat may be asked to set a separate course for class 1 boats from the BP line using marks close inshore using VHF Ch 77 while a simultaneous course is set in the river for class 2 and 3 using VHF Ch M1 (37). Note Corinthian Class may be using Ch 72.

EMERGENCY NUMBERS

Coastguard

VHF 16 or 999

Falmouth 01326 317 575

Solent 02 392 552 100

National Coastwatch Institute

VHF Ch 65 01803 262173

Ambulance, Fire, Police 999

NHS Direct for advice 111

Race officer VHF Ch 37 (M1)

Pursuit Races VHF Ch 72

Class 1 may use VHF Ch77

DHNA VHF Ch 11

Yacht Taxi VHF Ch 69
07968 839846

Darthaven Marina VHF Ch 80
(for emergency lift) 07887 726101

Pursuit Race Courses

Words in italics are advisory and do not constitute part of the Course Instructions.

Yachts should listen on VHF Ch 72 for course instructions, changes to SI and starting instructions.

1. Signalling The Course: Listed Courses

The course will normally be communicated by VHF Ch 72.

2. Alternative Courses

An alternative course may be set by describing the start line, each mark and its rounding direction in sequence.

3. Start Line

Blackstone Point Line (BP) as described in the general Course Appendix section 3.

4. Finish

Boats finish at the time specified in the Pursuit Race Start Times List. Note the name and/or Sail Number of the boat in front and boat behind, and note the GPS position. Send by WhatsApp to RDYC Corinthian Class.

5. Mark Rounding

5.1 Direction of Rounding: 's' means leave or round mark to starboard, 'p' to port.

5.2 All marks are rounding marks

6. Restrictions On Sailing Area

As described in the general Course Appendix section 4.

7. Marks And Approximate Positions (Wgs84).

As described in the general Course Appendix section 7.

8. COURSE MAP

As shown in the general Course Appendix.

9. BEWARE DANGERS

At low water Springs, and when beating towards Homestone Buoy, beware Homestone Rock which lies 300m to the West of the Buoy. Least depth is charted at 1.5m.

Note also dangers 50m to the West of Checkstone Buoy charted at 1.6m.

For further information see "Avoiding Rocks",

royaldart.co.uk/wp-content/uploads/2023/11/Avoiding_Rocks.pdf

Pursuit Race courses continues overleaf

CT: Inshore Courses for Pursuit Races

All races start on BP line. Repeat marks in brackets until time expires.

1. Wind South West	
CT1 Start at BP Hs 1p (2p 3p 4p)	Lap 1: 3.3/Lap 2: 2.3 NM
2. Wind South	
CT2 Start at BP 2p (Mp 4p 3p)	5.1 (3.1) NM
3. Wind South East	
CT3 Start at BP (4p Lp Yp)	1.8 (1.9) NM
4. Wind East	
CT4 Start at BP (Ms Hs Ys)	2.9 (3.2) NM
5. Wind North East	
CT5 Start at BP 2p (Ms 3s 2s)	5.1 (3.7) NM
6. Wind North	
CT6 Start at BP (Ms 3s Ls)	3.4 (3.4) NM
7. Wind North West	
CT7 Start at BP (2p 3p Yp)	3.3 (3.2) NM
8. Wind West	
CT8 Start at BP (3p Mp Yp)	3.9 (3.9) NM

D courses may be used for longer pursuit races.

WT: Winter Courses for Pursuit Races

For use when no Club Marks are laid

All races start on BP line. Repeat marks in brackets until time expires.

1. Wind South West	
WT1 Start at BP (Hp Mp Lp)	Lap 1: 2.4/Lap 2: 2.4 NM
2. Wind South	
WT2 Start at BP Hp (Cp Hp Lp)	2.8 (2.1) NM
Or, if rough at Checkstone:	
WT1 Start at BP (Hp Mp Lp)	2.4 (2.4) NM
3. Wind South East	
WT3 Start at BP (Hs Cs Ls)	2.1 (2.1) NM
Or, if rough at Checkstone:	
WT5 Start at BP (Ms Hs Ls)	2.4 (2.4) NM
4. Wind East	
WT4 Start at BP (Hp Mp Lp)	2.4 (2.4) NM
5. Wind North East	
WT5 Start at BP (Ms Hs Ls)	2.4 (2.4) NM
6. Wind North	
WT6 Start at BP (Hs Cs Ls)	2.1 (2.1) NM
Or WT5 Start at BP (Ms Hs Ls)	2.4 (2.4) NM
7. Wind North West	
WT4 Start at BP (Hp Mp Lp)	2.4 (2.4) NM
8. Wind West	
WT5 Start at BP (Ms Hs Ls)	2.4 (2.4) NM



Goulden & Sons

2 The Old Workshops, St Johns Terrace, Totnes, TQ9 5JH
01803 867359 | enquiries@gouldenandsons.co.uk

gouldenandsons.co.uk

COURSES FOR COASTAL SERIES

RDYC races in this series are open to RDYC members and members of local yacht clubs provided an RDYC entry form is completed.

RDYC members entering RTYC or BYC races in the series shall complete an entry form for the organising club of the relevant race.

Paragraph 4 (Restrictions on Sailing Area) of the Course Instructions (page 6) applies to all races.

Brixham and Back Race

Date Sunday 4 May 2025

Start Time 10:30. Warning Signal 10:25. Time Limit 6 hours.

Course Start at BP, H(p), Brixham Mark F(p), Finish at BP.

Shorten Course In the event of calm weather, a shorter course may be specified.

Brixham Mark F is a yellow buoy with a white flag, at 50d 24.60' N, 003d 30.40'

It lies on a bearing 045de, 0.3NM from the end of the breakwater in Brixham Harbour. White / Yellow

Goulden's Gallon of Rum Race

Date Sunday 18 May 2025

Start Time 11:00. Warning Signal 10:55. Time Limit 6 hours).

Course **A:** Start at BP Homestone (p) Orestone (p) Finish

B: Start at BP Homestone (p) Finish

C: as communicated by the Committee Boat.

Finish Line Between the Race Box on Battery Point and Brixham YC Red Finish Mark (Buoy with red flag 50 d 24'.42N 03 d 31'.33W) crossed from East to West.

Dart to Yealm Race

Date Saturday 21 June 2025

Start Time 10:00. Warning Signal 0955. Time Limit 8 hours.

Course Start at BP, sail direct to Finish Line at Yealm, passing to seaward of Blackstone Rock (off Start Point).

Finish Line Prolongation of the line formed by two white poles adjacent to the hut on south side of river Yealm entrance at Mouthstone Point.

Shorten Course Boats should time their transit by GPS of Longitude 3d 46.0' West. (on the East side of the entrance to Salcombe). In the event of no finishers this time may be used to determine the results.

Yealm to Dart Race

Date Sunday 22 June 2025

Start Time 0930. Warning Signal 0925. Time Limit 8 hours

Course Start at R Yealm sail direct to BP Finish Line at Dartmouth, passing to seaward of Blackstone Rock (off Start Point).

Start Line As Yealm Finish Line.

Finish BP Line crossed South to North.

Shorten Course Boats should time their transit by GPS of Longitude 3d 46.0' West. (on the East side of the entrance to Salcombe). In the event of no finishers this time may be used to determine the results.

Salcombe and Back Race

Date Saturday 5 July 2025
Start Time 10:30. Warning Signal 10:25. Time Limit 6 hours.
Course Start at BP, SHA Speed Buoy (s), Finish at BP.
Shorten Course In the event of calm weather, a shorter course may be specified.
SHA Speed Buoy Approx: 50d 13.098°N, 03d 46.494W. There are three Speed Buoys running NE just offshore of the Bar. This is the central one.

Brixham to Salcombe and Salcombe to Dart

Date Saturday 2 August and Sunday 3 August 2025
See Brixham YC website for Entries, NoR, Sailing Instructions and Courses (www.brixhamyachtclub.com)

RACING FLAGS



Flag L
Changes to
sailing instructions



Flag S
All Classes sail
shortened course
*S over Class Flag. Class(es)
sail shortened course*



Flag Y
Lifejackets EN150N std
must be worn



Flag H
All Classes start from
RDYC Line
*H over Class Flag. Class
start from RDYC Line*



Flag P
Preparatory Flag, 4
minutes to start.
Flag P down. 1 minute to start

Class Flags
NP1



NP2



Flag N
Abandon all races.
*N over Class Flag. Abandon
racing for that Class*



Flag X
Boat(s) on course side
at start

NP3



LR RIGGING

DARTMOUTH • DEVON

Honest Advice and Accurate Pricing

**A FULL RANGE OF RIGGING SERVICES FOR
CRUISING, RACING AND CLASSIC YACHTS**

SERVICES:

- Spars
- Deck hardware
- Wire, rope & carbon fibre
- Modern & traditional
- Steel & aluminium fabrication
- Leatherwork
- Winch servicing
- Splicing
- Furling gear
- Guardwires

**01803 840160 • lee@leerogersrigging.co.uk
www.leerogersrigging.co.uk**



Waterfront House

Stylish bed & breakfast with uninterrupted views of the harbour and river. Perfect for a relaxing break with a touch of luxury.

Book direct through our website and receive a 10% discount on all bookings.

www.waterfronthousedartmouth.co.uk



01803 835654

stay@waterfronthousedartmouth.co.uk

LADIES AFLOAT

Ladies Afloat is a very popular section of the Club, which thrives due to the enthusiasm and commitment of its members. We meet at the Club on Thursdays from early spring to October. With experience varying from complete novice to blue-water sailor, we all share a common enthusiasm for being afloat.

Our remit has remained the same over the years: to encourage female members of the RDYC to build skills and confidence, enabling active participation in all Club events. Whether you are new to sailing or have loads of experience, this is a wonderful opportunity to 'get out on the water' and make new friends. Many of our skippers

have built confidence through bringing their own boats.

We do not provide formal training courses but there is the opportunity to learn from the wide diversity and depth of skills of our members. Our regular activities include yachting and dinghy sailing with support boats

We co-ordinate our events via a WhatsApp Group and online. **To be included in these circulations please contact the RDYC Office or send us an email (ladiesafloat@royaldart.co.uk).** If you need help please let us know!

Do join us and you will receive a very warm welcome.

All dates (Thursdays unless specified otherwise) are subject to weather and availability of boats. All timings and locations to be confirmed via 'WhatsApp' group before each event.

Date	Event	Date	Event
27 March	Welcome Day	17 July	Yachting Day
03 April	Club Boats	24 July	Dinghies and Motorboats
10 April	Club and Owners' Motor-boats	31 July	Yachting Day
17 April	Meeting The Yachts	07 August	Yachting Day
24 April	Lets All Go Sailing	14 August	Dinghies and Motorboats
01 May	Dinghies and Motorboats	21 August	Fun Event and Upriver Overnight
08 May	Go East: Over night Mini Cruise		
15 May	Dinghies and Motorboats	4 September	Dinghies and Motorboats
22 May	Waddeton	11 September	Yachting Day
29 May	Yachting Day	18 September	Dinghies and Motorboats
05 June	Guest Yachts	25 September	Salcombe Overnight
12 June	Salcombe Overnight	2 October	Yachting Day
19 June	Up-River Day Event	9 October	Guest Yachts
26 June	Dinghies and Motorboats	16 October	Yachting Day
03 July	Yachting Day	30 October	Review and Plan 2026
10 July	Go West: Jubilee Cruise	11 December	Christmas Lunch

BOYS IN BOATS

Boys in Boats welcomes all club members for a morning's relaxed sailing usually out in Start Bay on member's boats, encouraging more use of our boats and for everyone, boat owner or not, many chances to sail more.

We meet on the terrace at 10:00 on Tuesdays, choose a boat or three from those attending, and get back to the club around 1315 for a bring your own lunch.

Some weeks we get up to one of our more adventurous jaunts: Brixham for Fish and Chips; a day on Lutlotte, a Swan 55 yawl, Lunch by Launch somewhere up river.

Cruising: In May we go further on a week-long cruise to various watering holes around the coast. This year our aim is the Jurassic Coast, Poole, perhaps the Solent.

Boys in Boats is a walk in December thinly disguising our Christs Lunch at RDYC.

Do feel free just to turn up, but to get details of our events see below.

Organiser: Norman Doidge (email to go on email list or WhatsApp Group with mobile number): norman.doidge@hotmail.com, 07968 375528.

All dates (Tuesdays unless specified otherwise) are provisional and weather dependent.

Date 2025	Time BST	Activity (Tuesdays). All dates provisional.
Fri 21, Mon 24 Mar	08:00	Working Party installing Pontoons
Late Mar-Apr	½ day	Working Parties assisting dingy prep as needed
22 April	½ day	First Day Sailing of the year
29 Apr, 6 May	½ day	Day Sailing
11-17 May	Thu-Tue	Week Cruise to Channel Islands
20, 27 May	½ day	Day Sailing
3 June	Whole Day	Brixham Fish and Chips! HW Dover 1741 BST
10, 17, 24 June	½ day	Day Sailing
Gaffer And Multihull Days (To Be Arranged When Possible).		
1, 8 July	½ day	Day Sailing
15 July	Whole day	Backup for Brixham HW Dover 1539 BST
22, 29 July	½ day	Day Sailing
5 Aug	¾ day	Lunch by Launch venue TBC HW Dm 1451/3.8
12 Aug	½ day	Day Sailing
19 Aug PLYMOUTH	Whole day	Day Sailing Chris Smith's Beneteau
26 Aug	Regatta Passage Race, No BiB	
Sept-Oct	½ day	Will sail depending on weather
16 or 23 Sep tbc	Whole day	Day Sailing Lutlotte
Sept-Oct	Tuesdays	End of season working parties as needed
Wednesday 4 Dec	¾ day	Christmas Walk and Lunch

CRUISING & MOTORBOAT GROUP



Our members enjoy regular cruising along the stunning Devon and Cornwall coast, with occasional hops across the channel. Others venture for longer periods to the Channel Islands and Northern France, Southern Brittany, Ireland, the West Coast of Scotland, or even the Baltic.

Corinthian Class:

Launched in 2024, this new class for comfortably ballasted cruising boats to race in a friendly separate competition, has been a great success. Away from hurly burly start lines and without the need for large numbers of experienced

crew, this class enables cruising boat owners to have a blast around the cans, just as a couple or with family or friends. It's a racing class for cruisers, but not racing as we have known it. With a separate start away from the jostle of the IRC fleet, white sails only pursuit races and longer legs, this class suits all those interested in getting out on the water for some friendly competition on Wednesday evenings and Saturdays (with socials afterwards in the clubhouse). Some coastal races are also included in the calendar.

Whether we sail as families, friends, couples or single-handed, a busy sailing and social programme is organised throughout the year, so members can get the most from their boats and their RDYC membership.

If you would like to receive timely postings to Cruising members, with the odd bit of cruising chat, do join the RDYC Cruising WhatsApp Group, by emailing cruising@royaldart.co.uk.

Richard Balfry - Cruising Group Co-Ordinator

2025 Sailing Calendar - Cruising & Motorboat Group

- | | |
|--|---|
| 8 th - 9 th March | - Cruising Weekend Forum, RDYC |
| 26 th - 27 th April | - Shakedown Cruise to Salcombe |
| 10 th May | - RNLI Charity Day |
| 24 th - 26 th May | - Cruise to Newton Ferrers & Cawsands |
| 31 st May - 1 st June | - English Riviera Air Show, Torbay |
| 7 th - 8 th June | - Classics Regatta |
| 14 th June | - Eddystone Charity Sailing Pursuit, Plymouth |
| 14 th - 27 th June ^{WW} | - Cruise to Isles of Scilly |
| 29 th Jun - 4 th July | - Merlin Rocket Week, Salcombe |
| 4 th - 10 th July ^{WW} | - Cruise to the Channel Islands |
| 11 th - 12 th July | - Tunes on the Sands, Blackpool Sands |
| 13 th - 14 th August | - British Fireworks Championships, Plymouth |
| 27 th - 30 th August | - Dartmouth Royal Regatta |
| 6 th - 11 th September | - Dolphin Boatyard 'Week of Sail' |
| 20 th - 21 st September | - Closing Cruise to Salcombe |

NB. ^{WW} = Weather Window (to suit Skipper & Crew)

.... together with local sailing in company, to suit weather and tides.

JUNIOR SAILING

Bringing the joys of sailing to a new generation, the RDYC Junior Sailing Programme remains ever popular with children aged 9-16 yrs. Held every year under the auspices of the RYA, the formal training still allows plenty of time for fun and games. Numbers are limited and priority is given to club members. Junior sailing provides a showcase and vibrant focus for the club each Saturday morning with typically 40 children out on the water. Inevitably, this requires a large pool of volunteers. There are plenty of opportunities for helpers with or without experience to get involved.

Contact: Suzanne at admin@royaldart.co.uk

Ready the Boats

on Saturday 5th & 12th April, 0930 - 1300

Parents and volunteers are asked to help get the boats ready for the sailing season.

Taster morning Saturday 26th April

For new sailors who have a place on the course, designed primarily to whet appetites for sailing and allow our RYA approved Instructors to assess abilities and ensure that new sailors are placed in the right training group.

Saturday morning course

Saturdays 3rd May to July 19th

The full programme runs for 12 weeks on Saturday mornings. Sailors are able to progress through the RYA stages 1-4, with a certificate at the end of each stage. We also provide Assistant Instructors (and any keen parents!) with the opportunity to crew on racing boats on a Saturday afternoons or Wednesday evenings (helming, mainsheet, jib and spinnaker trimming, foredeck work, tactics and navigation).

Mini Racing Points Series

A Tuesday and Thursday evenings Mini Racing Points Series starting mid to end of July provides junior sailors with a chance to put into practice some of their new-found skills and compete with their peers. Encouragement is given to take part in the Dartmouth Junior Regatta on 23rd - 25th August to compete for some silverware.

RDYC Junior Sailing Week

The RDYC Junior Sailing Week, a fun and action-packed time for all ability levels, runs from 28th July for 5 days. Please visit <https://royaldart.co.uk/junior-sailing/junior-sailing-week> for full details.

The season finishes in style with the Falling Leaves mini regatta in early September with invitations sent to the other sailing clubs on the Dart.

FAMILY DINGHY EVENINGS

These evenings are run in the summer months (June, July and early August) for members to have an informal evening of fun on the water in RS Quest dinghies with support boat cover. Skill level is varied and parents are welcome to bring their junior sailors along. These evenings are very dependent on weather and having support boat cover and are usually organised via a WhatsApp group.

If you would like to take part, please contact rearcommoforesailing@royaldart.co.uk to be sent the joining form and be included in the WhatsApp group. Dates to be confirmed.



JUNIOR SAILING & RDYST SCHOOLS PROGRAMME

Date 2025	Time BST	Event
Sat 5 & 12 April	9:30 -13:00	Preparing boats for season
Sat 26 April	10:00 -13:00	Taster morning/instructor training
Sat 3 May - Sat 19 July	Every Saturday 09:30 -12:30	Juniors RYA Training Programme (12 weeks)
Dates to be confirmed	Friday 17:30	Family Dinghy Evenings
8, 10, 15, 17, 22, 24, Jul (& Sat 26 July)	Tues & Thurs 17:00-20:00	Junior Points Race series Racing (RDYC Members)
28 July to 1 August	Mon-Fri 09:30 -15:00	RDYC Junior Sailing Week

ROYAL DART YOUTH SAILING TRUST SCHOOL SESSIONS

3, 10, 17, 24 June	Tuesdays 09:30 - 14:30	Dartmouth Academy
w/c 30 June,7, 14 July	Mon-Fri 09:30 - 14:30	Local primary schools Year 6 Taster Days

RYA TRAINING

The club is keen that members both increase their skills and keep them up to date, so runs a series of training courses each year, discounted for members.



Application forms, details and times are on the website. Check the website <https://royaldart.co.uk/train> for current information.

To drive a club safety boat, members must hold the RYA Powerboat 2 certificate (or an equivalent qualification) and undertake a boat-specific test with Colin Bower or Paul Jewell, our Power Boat Instructors.

Safety Boat Drivers for Junior Sailing events, need to do the RYA Safety Boat course.

Full details can be found at <https://royaldart.co.uk/rdyc-approved-drivers>

Royal Dart Youth Sailing Trust

The RDYST was formed in 2016 as part of the 150th anniversary celebrations of The Royal Dart Sailing Club.

The Dart is a busy, vibrant and integral part of life in South Devon, but it is inaccessible to many local people who should be enjoying its many attractions, especially children from disadvantaged backgrounds who simply cannot afford to get on the water.



The RDYST was founded to enable local youth from less privileged backgrounds

to enjoy sailing on the waters of the Dart, under the care and guidance of RYA registered organisations and instructors. We want them to have an opportunity that many of us take for granted.

Sailing in small boats is exciting. It gives children the chance to take responsibility for their craft, learn the mechanics of sailing and enjoy healthy competition. It builds confidence, teamwork and leadership skills in a fun and safe environment. Our programme includes water based activities for youngsters in the age range 10-16 years.

In 2024, as in earlier years, 180 children from 8 local primary schools enjoyed their first taste of sailing during Schools Weeks in July, along with older pupils taking part in weekly dinghy sailing. We'll be running this programme again in 2025.

Introduced in 2023 and entering its 3rd year, the Trust continues *Career Opportunities Through Sailing (COTS)*, a sponsored scheme to train and develop youngsters from 11 years old to gain their qualification as Dinghy Instructors over a period of 4 years. Our original 2 candidates have now completed their first 2 years within the 12 weeks of Junior Sailing at RDYC. In 2024 we added a further 2 youngsters into the 1st year and they will progress to their 2nd year this season and we will add in 2 more to Year 1.

Also in 2025, we will be sponsoring fifteen teenagers aboard 'Prolific', owned by the Ocean Youth Trust. The 2024 voyage was very successful in building skills and relationships among those who took part. Our aim for these trips is to engage the participants in all aspects of sailing a large vessel and encourage interest in working in the marine industry and enhance their life skills in the process.

Paddleboarding and kayaking sessions for over 100 Year 7 and 8 pupils from Dartmouth Academy has become part of our standard programme. Run in September, it's a team building exercise to bring together the pupils who have joined the Academy from local junior schools

All the above activities rely heavily upon the support of RDYC Volunteers, Junior Assistant Instructors, Safety Boat drivers and of course generous supporters and donors who help to fund them.

We do need your support please. Visit our web site for more information on how you can help this worthwhile cause or ask at the Club Office or contact one of our Trustees (admin@royaldart.co.uk).

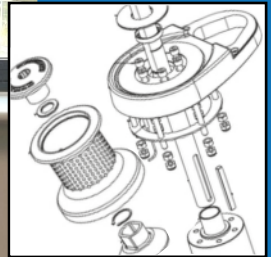
spare@ MARINE

Search • Source • Supply



PREMIER
MARINAS ~ NOSS ON DART

Marine Spares Specialists ~ Safety Beacon & Lifejacket Servicing



01803 607299

sales@sparesmarine.co.uk

www.sparesmarine.co.uk

Spares Marine, Unit 5F, Noss On Dart Marina, Bridge Road,
Kingswear, Dartmouth TQ6 0EA, UK

YOUR COMPLETE BOATYARD

- Lift out & relaunch
- Storage ashore open & undercover
- On site chandlery
- Adjacent to town/
good road access
- Level concrete yard
- All boats held in
quality cradles
- Electric/water
access



BALTIC WHARF BOATYARD

St Peter's Quay

Totnes, Devon TQ9 5EW

01803 867922

enquiries@balticwharf.co.uk

www.balticwharf.co.uk