

## COURSE APPENDIX 2025

*Courses for Start Bay races are shown first, then by Pursuit Race Courses, followed by courses for the Coastal Series.. Words in italics are advisory and do not constitute part of the Course Instructions.*

*Yachts should listen on VHF Ch M1 (37a) for course instructions, changes to SI and starting instructions. Exceptionally VHF Ch 72 may be used.*

### 1. Signalling The Course: Listed Courses

The course will normally be communicated by VHF Ch M1 (37a). An alternative, usually Ch 72, may be used. The course may be changed between successive starts. Exceptionally the course may be displayed by boards showing the Class(es), followed by course letter and number.

### 2. Alternative Courses

*An alternative course should only be used if no listed course is satisfactory. Describe the start line, each mark and its rounding direction in sequence and the finish line.*

Exceptionally, boards indicating the individual marks to round in order may be used.

A red board indicates leave to port: a green board indicates leave to starboard.

### 3. Start And Finish Lines

#### BP Blackstone Point

Prolongation of the line joining the two white flag staffs at Blackstone Point, with Castle Ledge Buoy as the Outer Distance Mark (ODM).

If a committee boat is present, it will be positioned as the inner distance mark and the line will be between the boat and Castle Ledge.

#### CB Committee Boat

Between the main mast of the Committee Boat and the ODM, which is the nearest adjacent mark. When a mark forms part of the Start or Finish Line it is omitted as a rounding mark on that leg.

#### CL RDYC Club Line

The transit of the RDYC Flagpole and outermost downriver pontoon pile.

### 4. Restrictions On Sailing Area

While racing, boats shall not pass between any of the following and the shore: Western Blackstone Rock, Mew Stone Rocks, Combe Rocks, Dancing Beggars Rocks, Cod Rock (off Berry head) and Blackstone Rock (off Start Point).

**West Rock Buoy (R) shall be passed to seaward EXCEPT when it is used as a rounding mark.**

*When West Rock Buoy (R) is used as a mark of the course, boats should stay close to it when rounding as the West Rock is awash at low tide and lies about 200m NW of the buoy.*

**Boats must keep clear of all ferries at all times.**

## 5. Mark Rounding

**5.1** Direction of Rounding 's' means leave or round mark to starboard, 'p' to port.

**5.2** All marks are rounding marks except H which may be a passing mark on certain courses.

## 6. Shorten Course

In Course Groups A-F the Shorten Course will finish at the mark shown in red with square brackets.

However, if conditions require it a Committee Boat may take up station at any mark of the course and announcing Shorten Course on VHF and by flying the Shorten Course signal to finish.

## 7. MARKS AND APPROXIMATE POSITIONS (WGS84)

<b>ODM</b>	Nearest mark to the CB	<i>(which may be H, L, C, T, Y, Z, 1, 2, 3, 4)</i>
<b>H</b>	Homestone, red can buoy,	50d 19.61'N, 3d 33.55'W
<b>M</b>	Mewstone Buoy, south cardinal buoy	50d 19.92'N, 3d 31.89W
<b>R</b>	West Rock Buoy, south cardinal buoy	50d 19.86'N, 3d 32.47'W
<b>L</b>	Castle Ledge Buoy, green conical buoy	50d 19.99'N, 3d 33.11'W
<b>C</b>	Checkstone, red can buoy	50d 20.45'N, 3d 33.81'W
<b>X</b>	Yellow 6 knot buoy <i>(off Wash Point, N of Newf'nd Cove)</i>	50d 20.30N, 3d33.3W
<b>Y</b>	Yellow 6 knot buoy <i>(due N Homestone, close to W. Blackstone)</i>	50d 19.98'N, 3d 33.66'W
<b>1</b>	RDYC 1, yellow conical buoy with number	50d 19.11'N 3d 34.49'W
<b>2</b>	RDYC 2, yellow conical buoy with number	50d 18.7'N 3d 33.4'W
<b>3</b>	RDYC 3, yellow conical buoy with number	50d 19.0'N 3d 32.5'W
<b>4</b>	RDYC 4, yellow conical buoy with number	50d 19.6'N 3d 32.4'W
<b>T</b>	Temporary orange tetrahedral or lozenge buoy	<i>may also replace X or Y.</i>
<b>T1</b>	Temporary orange tetrahedral or lozenge buoy	<i>near Kingswear Castle</i>
<b>T2</b>	Temporary orange tetrahedral or lozenge buoy	<i>laid upriver</i>
<b>S</b>	Skerries, red can buoy	50d 16.3d'N, 3d 33.78'W
<b>W</b>	Wave Buoy (3m SW of H)	50d 17.50'N, 3d 36.97'W

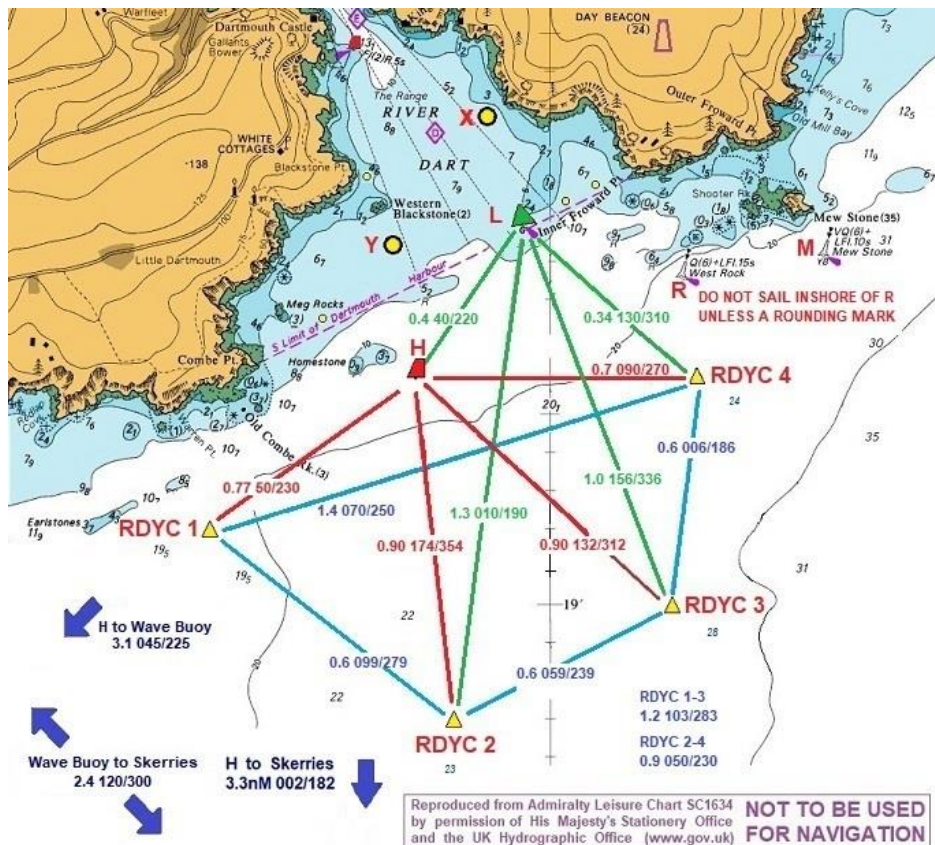
The Wave Buoy has two associated orange floats which lie 30m from the buoy itself. These floats shall be considered an extension of the Wave Buoy and rounded accordingly.

**WM** (Windward Mark) and **LM** (Leeward Mark) as designated by VHF for A9 Course.

WM and LM may be temporary laid orange marks or fixed marks.

*Marks laid in the river near the Club Line need an extension mooring line.*

## Course Map 2025



Series	Class 1	Class 2 & 3	Combined Classes	Light wind
Wednesday Races With CB and Marks in place	Gp A	Gp B	Group B	Group C
Wed Race with Very light wind only in river				Group R
Wed Race with CB and Cruise liner due to leave				Gp Z: See RO Manual
Wed or Sat Races no CB	Gp D (long)	Gp B	Gp E	Gp F
Pursuit Races Wednesday and Saturday (All classes)	Club Marks in Place: CT		No Club Marks: WT	

## Courses in Start Bay 2025

### A & B: Normal Inshore Courses with a committee boat.

*A courses are longer courses for Class 1.*

*B courses are shorter ones for Class 2 and Class 3.*

*The Shorten Course will finish at the mark shown in red and square brackets.*

*Shorten course length in brackets. Information in Italics is advisory only.*

#### 1. Wind South West

A1 Start at L 1p 2p [Lp] 1p finish at L 5.8 (3.3) NM

B1 Start at L 1p 2p [Lp] Hp finish at L 4.3 (3.3) NM

#### 2. Wind South

A2 Start at L 2s 1s [Hs] Ls 2s finish at H 5.7 (3.0) NM

B2 Start at L 2s 1s [Hs] 2s finish at H 4.9 (3.0) NM

#### 3. Wind South East

*Start between 'T' and Committee Boat placed NW of Home to create a longer beat*

A3 Start at T 3s 1s Ts [Hs] 3s finish at H 5.8 (3.7) NM

B3 Start at T 3s Ts [Hs] 3s finish at H 4.5 (2.7) NM

#### 4. Wind East

*Start between 'T' and Committee Boat placed W of Home to create a longer beat.*

A4 Start at T 4s 3s Ts [Hs] 4s Ts finish at H (all classes) 5.0 (3.0) NM

*If swell severe consider E4/F4. Start on BP line, CB if present is ODM.*

#### 5. Wind North East

A5 Start at H Ls 3s 1s [Hs] Ls 1s finish at H 6.2 (3.6) NM

B5 Start at H Ls 3s 1s [Hs] 1s finish at H 5.1 (3.6) NM

#### 6. Wind North

A6 Start at H Yp 1p 2p [Hp] Tp 2p finish at H 5.5 (3.0) NM

B6 Start at H Yp 1p 2p [Hp] 2p finish at H 4.9 (3.0) NM

#### 7. Wind North West

*'T' placed NW of Home to give a short first windward leg.*

A7 Start at H Tp 1p 3p [Hp] Tp 3p finish at H 5.7 (3.3) NM

B7 Start at H Tp 2p 3p [Hp] 3p finish at H 4.9 (3.0) NM

#### 8. Wind West

*'T' placed W of Home to create a longer beat. May use Course A8X, 1 instead of 'T'.*

A8 Start at 4 Tp 2p 4p [Hp] Tp 4p finish at H 5.8 (3.8) NM

A8X Start at 4 1p 2p 4p [Hp] 4p finish at H 5.5 (3.8) NM

B8 Start at 4 Hp 3p 4p [Hp] 4p finish at H 4.5 (3.0) NM

## 9. All Directions: Windward - Leeward Course

CB start line at Leeward Mark (LM). Windward Mark (WM) advised by VHF.

A9 Start at LM, repeat lap WMp LMp until shorten course signal, finish at **[LM]**

## C: Short Inshore Courses with a Committee Boat, for light winds

*C courses must be used for all classes as start and finish lines may not be compatible with A and B courses.*

### 1. Wind South West

C1 Start at H 1p 2p **[Hp]** 1p Finish at H 4.2 (2.6) NM

### 2. Wind South

C2 Start at H 2s 1s [Hs] 2s Finish at H 4.4 (2.6) NM

### 3. Wind South East

C3 Start at H 3p 4p **[Hp]** 3p Finish at H 4.0 (2.2) NM

### 4. Wind East

C4 Start at H 4s 3s **[Hs]** 4s Finish at H 3.7 (2.2) NM

### 5. Wind North East

C5 Start at H Ls 3s Hs **[Ls]** Hs Finish at L (can also Finish at [H] ) 4.0 (3.0) NM

### 6. Wind North

C6 Start at H Tp 2p [Hp] 2p Finish at H 4.3 (2.4) NM

### 7. Wind North West

C7 Start at H Tp 3p [Hp] 3p Finish at H 4.2 (2.4) NM

### 8. Wind West

C8 Start at 4 Hp 3p [4p] Hp Finish at 4 (can also Finish at H) 3.7 (2.2) NM

## D: Longer Courses with no committee boat

*D Courses may be used for longer pursuit races. These courses only have a single lap. If a longer race is required, then Castle Ledge shall be left to Starboard and the first lap repeated.*

### 1. Wind South West

D1 Start at BP Wp Sp Finish at BP 9.7 NM

### 2. Wind South

D2 Start at BP Ss Ws Finish at BP 9.7 NM

### 3. Wind South East

D3 Start at BP 3s 1p Sp Finish at BP 9.2 NM

### 4. Wind East

D4 Start at BP Wp Sp Finish at BP 9.7 NM

### 5. Wind North East

D5 Start at BP Ss Ws Finish at BP 9.7 NM

## **6. Wind North**

D6 Start at BP Sp Finish at BP 9.7 NM

## **7. Wind North West**

D7 Start at BP Ss Ws 4p Finish at BP 9.7 NM

## **8. Wind West**

D8 Start at BP Ss Ws Finish at BP 9.7 NM

## **E & F: Inshore Courses with no committee boat**

*E courses are for all Classes in the Wednesday, Day Race and Frostbite series in steady `winds.*

*F courses are for all Classes in the Wednesday, Day Race and Frostbite series in light winds.*

*All races start and finish on BP line. CB if present is ODM.*

*When a Shorten Course has been broadcast (VHF Ch M1 (37a)), finish on the BP line as the boat approaches the mark in Red and Square Brackets which becomes the ODM and is left to Starboard.*

## **1. Wind South West**

E1 Start at BP 1p 2p [Lp] 1p Finish at BP 5.9 (3.4) NM

F1 Start at BP 1p 2p [Lp] Hs Finish at BP 4.3 (3.4) NM

## **2. Wind South**

E2 Start at BP 2s 1s [Ls] 2s Finish at BP 6.0 (3.4) NM

F2 Start at BP 3s Hs [Ls] 3s Finish at BP 4.7 (2.4) NM

## **3. Wind South East**

E3 Start at BP 1p 2p [Lp] Hp 3p Finish at BP 6.0 (3.8) NM

F3 Start at BP Hp 3p [Lp] Hp 3p Finish at BP 4.7 (2.5) NM

## **4. Wind East**

E4 Start at BP 1p 3p [Lp] Hp 4p Finish at BP 5.4 (3.5) NM

F4 Start at BP Hp 4p Hp 4p [Lp] Hp 4p Finish at BP 4.9 (3.0) NM

## **5. Wind North East**

E5 Start at BP 1p Hs 2p 4p [Lp] Hs Finish at BP 5.6 (4.6) NM

F5 Start at BP 2p 4p [Lp] Hs Finish at BP 4.0 (3.0) NM

## **6. Wind North**

E6 Start at BP 2p [Ls] 4s 2s Finish at BP 5.7 (2.6) NM

F6 Start at BP 2p [Ls] 4s 3s Finish at BP 4.9 (2.6) NM

## **7. Wind North West**

E7 Start at BP 2s 1s 3p [Ls] 4s Finish at BP 5.7 (4.5) NM

F7 Start at BP Hp 3p Hs 4p [Ls] 4s Finish at BP 4.9 (3.7) NM

## 8. Wind West

E8	Start at BP 3s 1s [Ls] 4s Hs Finish at BP	5.4 (3.6) NM
F8	Start at BP Hp 4s Hs [Ls] 4s Hs Finish at BP	4.2 (2.5) NM

### Z: Courses using Buoys H, 1, 2, Y and T

*These courses are designed to be used when a cruise ship is scheduled to leave the river during racing.*

The course will be communicated on VHF 37 (M1) and may not have a windward start. All boats must keep clear of the fairway East of Buoys Y and H while the ship is exiting the river.

## Courses in River Dart 2025

### R: River Courses

*For use when there is either no wind, fog or heavy weather in the range.*

River courses may be run from the RDYC Terrace or a Committee Boat.

Courses must not be set which involve racing through the ferry tracks-

In fog races should be abandoned if visibility is less than the width of the river at the Club Line.

#### Sea Breeze Course or Strong NW Breeze

*In sea breeze conditions, the best wind is found between the club and Dartmouth Castle. Lay T1 on the inland side of Dartmouth Castle as the wind in the entrance is inconsistent.*

In strong winds (over 10 knots), Class1 are prohibited from using spinnakers in the river. The race officers decision will be final.

**T1 laid near Kingswear Castle, T2 just downstream from CL .**

**R1** Start on CL T1p Lap (T2p T1p) Finish on CL.

*Wind SE*

Repeat the Lap until the Shorten Course is signalled.

#### ***Breeze further up the river***

*Set the CB start line opposite yellow Ship Buoy MS1 and lay T2 well clear downstream of the Higher Ferry. **All boats must keep clear of the ferries at all times.***

**R2** Start at MS1 Lap (T2p MS1p) Finish at MS1.

Repeat the Lap until the Shorten Course is signalled.

#### **Simultaneous use of Blackstone Point Line and Club Line on VHF Ch 77.**

In heavy Weather at the race officer's sole discretion, a Class 1 boat may be asked to set a separate course for class 1 boats from the BP line using marks close inshore using VHF Ch 77 while a simultaneous course is set in the river for class 2 and 3 using VHF Ch M1 (37). Note Corinthian Class may be using Ch 72.

# Pursuit Race Courses 2025

*Words in italics are advisory and do not constitute part of the Course Instructions. Yachts should listen on VHF Ch 72 for course instructions, changes to SI and starting instructions.*

## **1. Signalling The Course: Listed Courses**

The course will normally be communicated by VHF Ch 72.

## **2. Alternative Courses**

An alternative course may be set by describing the start line, each mark and its rounding direction in sequence.

## **3. Start Line**

Blackstone Point Line (BP) as described in the general Course Appendix section 3.

## **4. Finish**

Boats finish **at the time specified in the Pursuit Race Start Times List**. Note the name and/or Sail Number of the boat in front and boat behind, and note the GPS position. Send by WhatsApp to RDYC Corinthian Class.

## **5. Mark Rounding**

**5.1** Direction of Rounding: 's' means leave or round mark to starboard, 'p' to port.

**5.2** All marks are rounding marks

## **6. Restrictions On Sailing Area**

As described in the general Course Appendix section 4.

## **7. Marks And Approximate Positions (Wgs84).**

As described in the general Course Appendix section 7.

## **8. COURSE MAP**

As shown in the general Course Appendix.

## **9. BEWARE DANGERS**

At low water Springs, and when beating towards Homestone Buoy, beware Homestone Rock which lies 300m to the West of the Buoy. Least depth is charted at 1.5m.

Note also dangers 50m to the West of Checkstone Buoy charted at 1.6m.

For further information see "Avoiding Rocks",

[royaldart.co.uk/wp-content/uploads/2023/11/Avoiding\\_Rocks.pdf](http://royaldart.co.uk/wp-content/uploads/2023/11/Avoiding_Rocks.pdf)



## CT: Inshore Courses for Pursuit Races

*All races start on BP line. Repeat marks in brackets until time expires.*

### 1. Wind South West

CT1 Start at BP Hs 1p (2p 3p 4p)

Lap 1: 3.3nm / Lap 2: 2.3

### 2. Wind South

CT2 Start at BP 2p (Mp 4p 3p)

5.1nm / 3.1nm

### 3. Wind South East

CT3 Start at BP (4p Lp Yp)

1.8nm / 1.9nm

### 4. Wind East

CT4 Start at BP (Ms Hs Ys)

2.9n / 3.2nm

### 5. Wind North East

CT5 Start at BP 2p (Ms 3s 2s)

5.1nm / 3.7nm

### 6. Wind North

CT6 Start at BP (Ms 3s Ls)

3.4nm / 3.4nm

### 7. Wind North West

CT7 Start at BP (2p 3p Yp)

3.3nm / 3.2nm

### 8. Wind West

CT8 Start at BP (3p Mp Yp)

3.9nm / 3.9nm

D courses may be used for longer pursuit races.

## WT: Winter Courses for Pursuit Races *For use when no Club Marks are laid*

*All races start on BP line. Repeat marks in brackets until time expires.*

### 1. Wind South West

WT1 Start at BP (Hp Mp Lp)

Lap 1: 2.4nm / Lap 2: 2.4 nm

### 2. Wind South

WT2 Start at BP Hp (Cp Hp Lp)

2.8 / 2.1

Or, if rough at Checkstone:

WT1 Start at BP (Hp Mp Lp)

2.4 / 2.4

### 3. Wind South East

WT3 Start at BP (Hs Cs Ls)

2.1 / 2.1

Or, if rough at Checkstone:

WT5 Start at BP (Ms Hs Ls)

2.4 / 2.4

### 4. Wind East

WT4 Start at BP (Hp Mp Lp)

2.4 / 2.4

### 5. Wind North East

WT5 Start at BP (Hp Mp Lp)

2.4 / 2.4

### 6. Wind North

WT6 Start at BP (Hs Cs Ls)

2.1 / 2.1

Or WT5 Start at BP (Ms Hs Ls)

2.4 / 2.4

### 7. Wind North West

WT4 Start at BP (Hp Mp Lp)

2.4 / 2.4

### 8. Wind West

WT5 Start at BP (Ms Hs Ls)

2.4 / 2.4

## Courses for Coastal Series Races 2025

RDYC races in this series are open to RDYC members and members of local yacht clubs provided an RDYC entry form is completed.

RDYC members entering RTYC or BYC races in the series shall complete an entry form for the organising club of the relevant race.

Paragraph 4 (Restrictions on Sailing Area) of the Course Instructions applies to all races.

### Brixham and Back Race

**Date** Sunday 4 May 2025

**Start Time** 10:30. Warning Signal 10:25. Time Limit 6 hours.

**Course** Start at BP, H(p), Brixham Mark F(p), Finish at BP.

**Shorten Course** In the event of calm weather, a shorter course may be specified.

*Brixham Mark F is a yellow buoy with a white flag, at 50d 24.60' N, 003d 30.40'.*

*It lies on a bearing 045de, 0.3NM from the end of the breakwater in Brixham Harbour.  
White / Yellow*

### Goulden's Gallon of Rum Race of Rum Race 2025

**Date** Sunday 18 May 2025

**Start Time** 11:00. Warning Signal 10:55. Time Limit 6 hours).

**Course** **A:** Start at BP Homestone (p) Orestone (p) Finish

**B:** Start at BP Homestone (p) Finish

**C:** as communicated by the Committee Boat.

**Finish Line** Between the Race Box on Battery Point and Brixham YC Red Finish  
Mark (Buoy with red flag  
50 d 24'.42N 03 d 31'.33W) crossed from East to West.

### Dart to Yealm Race

**Date** Sat 21 June 2025

**Start Time** 10:00. Warning Signal 0955. Time Limit 8 hours.

**Course** Start at BP, sail direct to Finish Line at Yealm, passing to seaward of Blackstone Rock (off Start Point).

**Finish Line** Prolongation of the line formed by two white poles adjacent to the hut on south side of river Yealm entrance at Mouthstone Point.

**Shorten Course** Boats should time their transit by GPS of Longitude 3d 46.0' West. (on the East side of the entrance to Salcombe). In the event of no finishers this time may be used to determine the results.

### Yealm to Dart Race

**Date** Sun 22 June 2025

**Start Time** 0930. Warning Signal 0925. Time Limit 8 hours

**Course** Start at R Yealm sail direct to BP Finish Line at Dartmouth, passing to seaward of Blackstone Rock (off Start Point).

**Start Line** As Yealm Finish Line.  
**Finish** BP Line crossed South to North.  
**Shorten Course** Boats should time their transit by GPS of Longitude 3d 46.0' West. (on the East side of the entrance to Salcombe). In the event of no finishers this time may be used to determine the results.

### **Salcombe and Back Race**

**Date** Saturday 5 July 2025  
**Start Time** 10:30. Warning Signal 10:25. Time Limit 6 hours.  
**Course** Start at BP, SHA Speed Buoy (s), Finish at BP..  
**Shorten Course** In the event of calm weather, a shorter course may be specified.  
**SHA Speed Buoy** Approx: 50d 13.098'N, 03d 46.494W. There are three Speed Buoys running NE just offshore of the Bar. This is the central one.

### **Brixham to Salcombe and Salcombe to Dart**

**Date** Saturday 2 August and Sunday 3 August 2025  
See Brixham YC website for Entries, NoR, Sailing Instructions and Courses ([www.brixhamyachtclub.com](http://www.brixhamyachtclub.com))