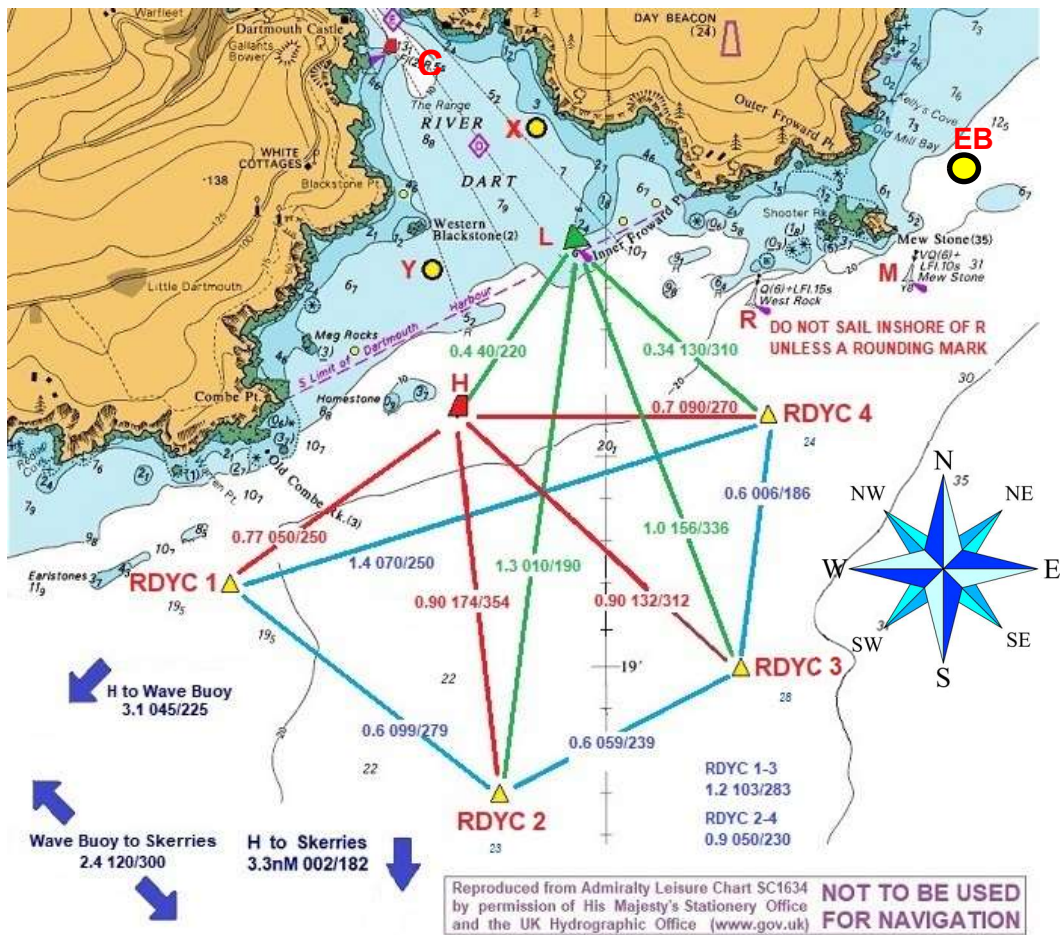


# CORINTHIAN WINTER COURSES 2024



## WT: Winter Courses for 75 minute Pursuit Races

All races start on BP line. Repeat marks in brackets until time expires.

### 1. Wind South West

WT1 Start at BP (Hp Mp Lp)

Lap 1: 2.4nm / Lap 2: 2.4 nm

### 2. Wind South

WT2 Start at BP Hp (Cp Hp Lp)

2.8 / 2.1

Or, if rough at Checkstone: WT1 Start at BP (Hp Mp Lp)

2.4 / 2.4

### 3. Wind South East

WT3 Start at BP (Hs Cs Ls)

2.1 / 2.1

Or, if rough at Checkstone: WT5 Start at BP (Ms Hs Ls)

2.4 / 2.4

### 4. Wind East

WT4 Start at BP (Hp Mp Lp)

2.4 / 2.4

### 5. Wind North East

WT5 Start at BP (Ms Hs Ls)

2.4 / 2.4

### 6. Wind North

WT6 Start at BP (Hs Cs Ls)

2.1 / 2.1

Or WT5 Start at BP (Ms Hs Ls)

2.4 / 2.4

### 7. Wind North West

WT4 Start at BP (Hp Mp Lp)

2.4 / 2.4

### 8. Wind West

WT5 Start at BP (Ms Hs Ls)

2.4 / 2.4

### Dangers

1. At low water Springs, and when beating towards **Homestone Buoy**, beware Homestone Rock which lies 300m to the West of the Buoy. Least depth is charted at 1.5m.
2. Dangers 50m to the West of **Checkstone Buoy** charted at 1.6m.

2.4 / 2.4

2.4 / 2.4

2.1 / 2.1

2.4 / 2.4

2.4 / 2.4

2.4 / 2.4