

CORINTHIAN COURSES APPENDIX 2024

Courses for Start Bay races are shown first, courses for the Coastal Series follow. Words in italics are advisory and do not constitute part of the Course Instructions.

Yachts should listen on VHF Ch 72 for course instructions, changes to SI and starting instructions.

1. Signalling the course: Listed Courses

The course will normally be communicated by VHF Ch 72.

2. Alternative courses

An alternative course may be set by describing the start line, each mark and its rounding direction in sequence and the finish line.

3. Start and Finish Lines

Blackstone Point (BP) Prolongation of the line joining the two white flag staffs at Blackstone Point, with Castle Ledge Buoy as the Outer Distance Mark (ODM).

If a committee boat is present, it will be positioned as the inner distance mark and the line will be between the boat and Castle Ledge.

4. Restrictions on Sailing Area

While racing, boats shall not pass between any of the following and the shore: Western Blackstone Rock, West Rock Buoy, Mew Stone Rocks, Combe Rocks, Dancing Beggars Rocks, Cod Rock (off Berry head) and Blackstone Rock (off Start Point).

West Rock Buoy (R) shall be passed to seaward EXCEPT when it is used as a rounding mark. *When West Rock Buoy (R) is used as a mark of the course, boats should stay close to it when rounding as the West Rock is awash at low tide and lies about 200m NE of the buoy.*

Boats must not impede the Higher or Lower Ferries or any other passenger ferries at any time.

5. Mark Rounding

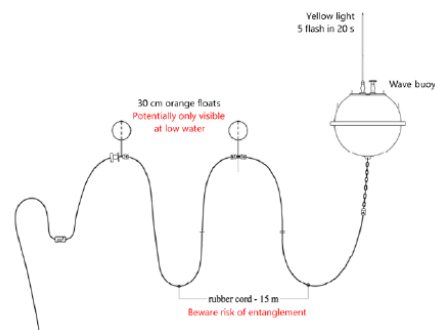
5.1 Direction of Rounding 's' means leave or round mark to starboard, 'p' to port.

5.2 All marks are rounding marks.

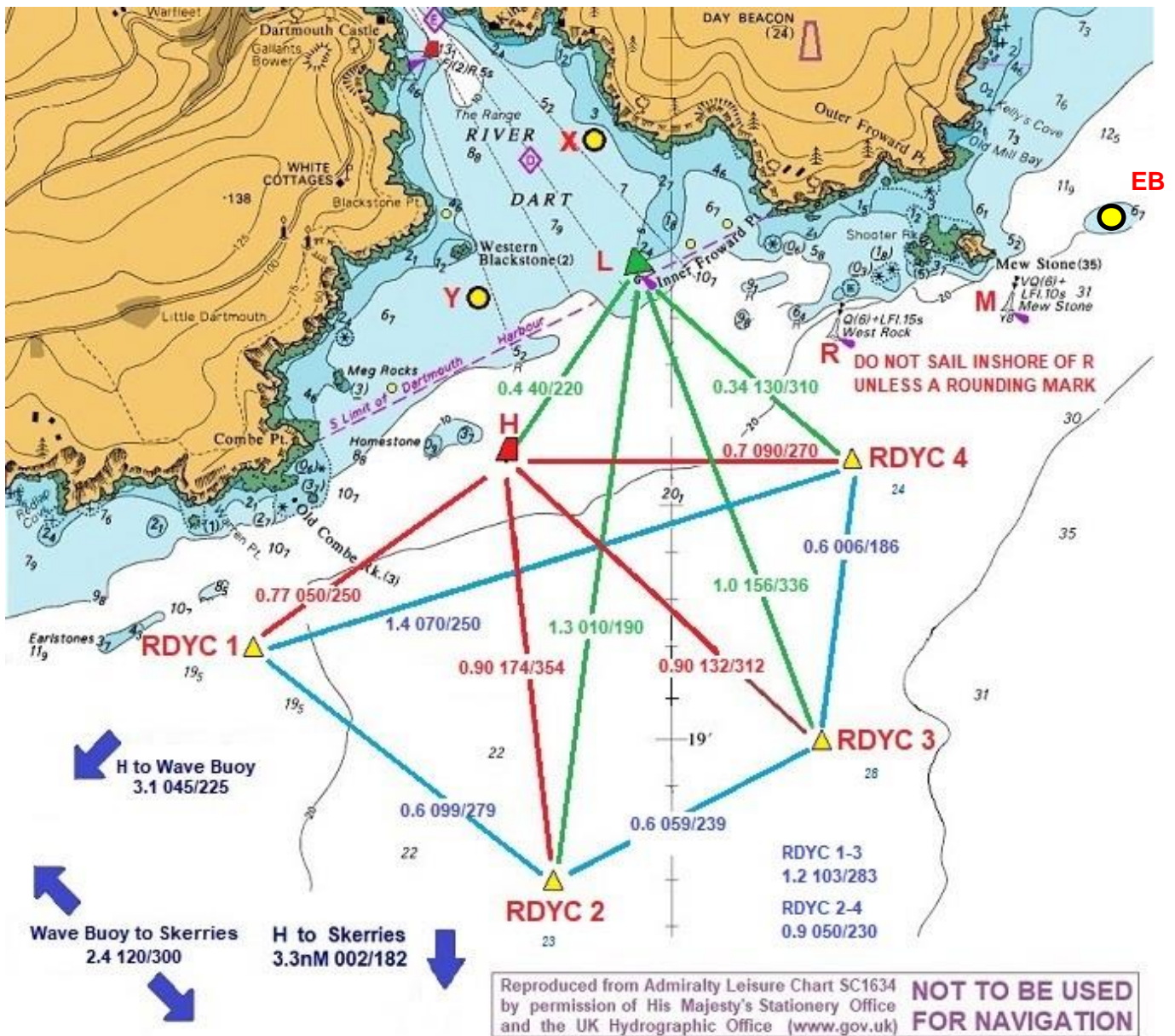
Marks and approximate positions (WGS84).

ODM	Nearest mark to the CB	<i>(which may be H, L, C, T, Y, Z, 1, 2, 3, 4)</i>
H	Homestone, red can buoy,	50d 19.61'N, 3d 33.55'W
M	Mewstone Buoy, south cardinal buoy	50d 19.92'N, 3d 31.89W
EB	Eastern Blackstone Rock	50d 20.20N, 3d 31.18W
R	West Rock Buoy, south cardinal buoy	50d 19.86'N, 3d 32.47'W
L	Castle Ledge Buoy, green conical buoy	50d 19.99'N, 3d 33.11'W
C	Checkstone, red can buoy	50d 20.45'N, 3d 33.81'W
X	Yellow 6 knot buoy <i>(off Wash Point, N of Newf'nd Cove)</i>	50d 20.30N, 3d33.3W
Y	Yellow 6 knot buoy <i>(due N Homestone, close to W. Blackstone)</i>	50d 19.98'N, 3d 33.66'W
1	RDYC 1, yellow conical buoy with number	50d 19.11'N 3d 34.49'W
2	RDYC 2, yellow conical buoy with number	50d 18.7'N 3d 33.4'W
3	RDYC 3, yellow conical buoy with number	50d 19.0'N 3d 32.5'W
4	RDYC 4, yellow conical buoy with number	50d 19.6'N 3d 32.4'W
T	Temporary orange tetrahedral or lozenge buoy	<i>may also replace X or Y.</i>
T1	Temporary orange tetrahedral or lozenge buoy	<i>near Kingswear Castle</i>
T2	Temporary orange tetrahedral or lozenge buoy	<i>laid upriver</i>
S	Skerries, red can buoy	50d 16.3d'N, 3d 33.78'W
W	Wave Buoy <i>(3m SW of Home)*</i>	50d 17.50'N, 3d 36.97'W

**The wave buoy has 2 associated orange floats which may lie 30m from the buoy itself. These floats shall be considered an extension of the Wave Buoy and rounded accordingly.*



COURSE MAP 2024



COURSES IN START BAY

CT: Inshore Courses for 75 minute Pursuit Races

All races start on BP line. Repeat marks in brackets until time expires.

1. Wind South West

CT1 Start at BP Hs 1p (2p 3p 4p)

Lap 1: 3.3nm / Lap 2: 2 .3

2. Wind South

CT2 Start at BP 2p (EBp 4p 3p)

5.1nm / 3.1nm

3. Wind South East

CT3 Start at BP (4p Lp Yp)

1.8nm / 1.9nm

4. Wind East

CT4 Start at BP (EBs Hs Ys)

2.9n / 3.2nm

5. Wind North East

CT5 Start at BP 2p (EBs 3s 2s)

5.1nm / 3.7nm

6. Wind North

CT6 Start at BP (EBs 3s Ls)

3.4nm / 3.4nm

7. Wind North West

CT7 Start at BP (2p 3p Yp)

3.3nm / 3.2nm

8. Wind West

CT8 Start at BP (3p EBp Yp)

3.9nm / 3.9nm