

# RDYC

## Royal Dart Yacht Club



## Sailing Programme 2024



CHANDLERY · MARINE SERVICES · BOAT YARD · MARINA

**DARTHAVEN  
MARINA**



Darthaven Marina · Brixham Road · Kingswear · Devon · TQ6 0SG  
T +44 (0)1803 752 242 · E [chandlery@darthaven.co.uk](mailto:chandlery@darthaven.co.uk)

[DARTHAVEN.CO.UK](http://DARTHAVEN.CO.UK)





**Dolphin  
Boatyard**  
DARTSIDE QUAY

## **Dolphin Boatyard welcomes you**

**We can offer :**

- **Storage ashore for 400 boats including undercover storage**
- **65 tonne travel hoist with a new waiting pontoon**
- **20 tonne slipway hoist and on-site mobile cranes**
- **Trailer sailor and self-launch options**
- **Full range of marine services**
- **New 70 berth marina**
- **Range of workshops and storage units for rent**
- **On site restaurant and holiday accommodation**
- **Beautiful walks, magnificent gardens, and places to visit**

**Please call in or phone or email us to reserve your space**

**Dolphin Boatyard  
01803 842424**

**Galmpton Creek,  
Kiln Road, Galmpton, TQ6 0EH**

**Wednesday Evening Racing 2024**

| Date  | Day | Event   | Start | Race Officer                     | HWDm<br>BST/ht |
|---|-----|---|-------|----------------------------------|----------------|
| <i>Start up and Night Owl Races start at BP line with no Committee Boat</i> |     |   |       |                                  |                |
| <b>Start Up Series</b>  |     |   |       |                                  |                |
| 3rd Apr   | Wed | Start Up 1  | 1815  | Jiggy                            | 1227/3.5       |
| 10th Apr  | Wed | Start Up 2  | 1830  | Bandit                           | 1931/5.0       |
| 17th Apr  | Wed | Start Up 3  | 1830  | Stren                            | 1320/3.3       |
| <b>Dolphin Boatyard Series 1</b>  |     |   |       |                                  |                |
| 24th Apr  | Wed | Series 1 Race 1   | 1830  | Finale                           | 1841/4.6       |
| 1st May   | Wed | Series 1 Race 2   | 1830  | EiderD/Moondance                 | 2320/3.9       |
| 8th May   | Wed | Series 1 Race 3   | 1830  | Ocelot/Corsair                   | 1825/4.9       |
| 15th May  | Wed | Series 1 Race 4   | 1830  | Free spirit (Elan)               | 2256/3.7       |
| 22nd May  | Wed | Series 1 Race 5   | 1830  | Jiggy                            | 1732/4.5       |
| 29th May  | Wed | Series 1 Race 6   | 1830  | Raspberry Jam                    | 2209/4.3       |
| <b>Darhaven Marina Series 2</b>   |     |   |       |                                  |                |
| 5th Jun   | Wed | Ashton Kettle R1  | 1830  | Bl Orca/Madelaine                | 1711/4.7       |
| 12th Jun  | Wed | Series 2 Race 2   | 1830  | Samaki                           | 2144/4.2       |
| 19th Jun  | Wed | Series 2 Race 3   | 1830  | Bandit                           | 1609/4.2       |
| 26th Jun  | Wed | Series 2 Race 4   | 1830  | Xocet                            | 2117/4.7       |
| 3rd Jul   | Wed | Series 2 Race 5   | 1830  | Hendrika/Mimosa                  | 1544/4.3       |
| 10th Jul  | Wed | Series 2 Race 6   | 1830  | Just Magic                       | 2050/4.5       |
| <b>Network Yacht Brokers (Noss) Series 3</b>                                |     |   |       |                                  |                |
| 17th Jul  | Wed | Series 3 Race 1   | 1830  | Sula                             | 1424/3.8       |
| 24th Jul  | Wed | Series 3 race 2   | 1830  | Nikita/Escapade                  | 2027/5.0       |
| 31st Jul  | Wed | Series 3 Race 3   | 1830  | Stren/Off Road                   | 1427/3.9       |
| 7 <sup>th</sup> Aug   | Wed | Series 3 Race 4   | 1830  | Leon                             | 1956/4.7       |
| 14th Aug  | Wed | Series 3 Race 5   | 1830  | Jubilant                         | 1211/3.7       |
| 21st Aug  | Wed | Series 3 Race 6   | 1830  | R Cave-Penny                     | 1926/5.2       |
| 28th Aug  | Wed | <b>Dartmouth Royal Regatta Passage Race (No Wed Racing)</b> |       |                                  |                |
| <b>Night Owl Series</b>   |     |   |       |                                  |                |
| 21 <sup>st</sup> Aug  | Wed | Night Owl 1   | 1830  | Race Officers<br>to be confirmed | 1900/4.8       |
| 11th Sep  | Wed | Night Owl 2   | 1815  |                                  | 2248/3.7       |
| 18th Sep  | Wed | Night Owl 3   | 1800  |                                  | 1819/5.2       |

# Weekend Racing 2024

| Date       | Day     | Event                           | Start   | Organising Club or RO | HW Dm BST/ht |
|------------|---------|---------------------------------|---|-----------------------|--------------|
| 05 May     | Sun     | Goulden's Gallon of Rum         | 1100  | Squibs (TDCCS series) | 1600/4.4     |
|            |         | Day Race 1                      |   |                       |              |
| 18 May     | Sat     | Class 2 & Squib Race 1          | 1400  | Class 2/Squib         | 1434/3.7     |
| 01 Jun     | Sat     | Class 2 & Squib Race 2          | 1400  | Class 2/Squib         | 1315/4.0     |
| 08 Jun     | Sat     | Dart-Yealm Coastal R2           | 1000  | TDCCS /tbc            | 0710/4.5     |
| 09 Jun     | Sun     | Yealm-Dart Coastal R3           | 0930  | TDCSS / tbc           | 0751/4.4     |
| 15 Jun     | Sat     | Class 2 & Squib Race 2          | 1400  | Class 2/Squib         | 1217/3.6     |
| 22 Jun     | Sat     | Bay Race R4                     | 1400  | Free Spirit           | 1043/4.2     |
|            |         | Day Race 2                      |   |                       |              |
| 23 Jun     | Sun     | Inter club racing Quests        | 1000  | RDYC                  | 0655/4.4     |
| 28 Jun     | Fr-Fr   | RTYC Offshore week              |   | RTYC                  |              |
| 29 Jun     | Sat     | Class 2 & Squib Race 4          | 1400  | Class 2/Squib         | 1138/4.1     |
| 06 Jul     | Sat     | Brixham-Salcombe R5             |   | BYC (TDCCS)           | 1827/4.6     |
| 07 Jul     | Sun     | Salcombe-Dartmouth R6           |   | BYC                   | 0658/4.4     |
| 13 Jul     | Sat     | Class 2 & Squib Race 5          | 1400  | Class 2/Squib         | 1539/4.0     |
| 17-25 July | Wed-Sat | <b>Classics Channel Regatta</b> | Classic Channel Regatta Ltd with RDYC, Guernsey YC, Loguivy Canot C |                       |              |
| 20 Jul     | Sat     | Class 2 & Squib Race 6          | 1400  | Class 2/Squib         | 0500/4.2     |
| 03 Aug     | Sat     | Class 2 & Squib Race 7          | 1400  | Class 2/Squib         | 1729/4.5     |
| 10 Aug     | Sat     | Salcombe & Back R7              | 1030  | RDYC/Free spirit      | 0920/4.2     |
|            |         | Day Race 3                      |   |                       |              |
| 10 Aug     | Sat     | Class 2 & Squib Race 8          | 1400  | Class 2/Squib         | 0920/4.2     |
| 17 Aug     | Sat     | Class 2 & Squib Race 9          | 1400  | Class 2/Squib         | 1603/4.3     |
| 27-31 Aug  |         | <b>Dartmouth Royal Regatta</b>  |   | JRSC                  |              |

|                          |                                |                |                                  |                            |
|--------------------------|--------------------------------|----------------|----------------------------------|----------------------------|
| Coastal Series (9 Races) | Day Race Mini Series (3 Races) | Special Events | Class 2 & Squib Series (9 Races) | Corinthian Races dates TBC |
|--------------------------|--------------------------------|----------------|----------------------------------|----------------------------|

|                   |   |                 |                    |
|-------------------|---|-----------------|--------------------|
| Jun-Aug Dates tbc | Friday Evening Family Sailing in Quests | 1730 on terrace | Details on Page xx |
|-------------------|---|-----------------|--------------------|

## Autumn Racing 2024

| Date   | Day | Event                   | Start | Organising Club or Race Officer | HW Dm<br>BST Ht |
|--------|-----|-------------------------|-------|---------------------------------|-----------------|
| 07 Sep | Sat | Dart-Salcombe R8        | 1030  | RDYC Xocet                      | 0820/4.5        |
| 08 Sep | Sun | Salcombe-Dart R9        | 0930  | Xocet                           | 0846/4.4        |
| 13 Sep | Fri | BYC Exe Buoy Race       | 1430  | BYC (TDCCS)                     | 1356/3.7        |
| 14 Sep | Sat | Autumn Race 1           | 1430  | Jiggy                           | 1435/4.0        |
| 21 Sep | Sat | Autumn Race 2           | 1430  | Stren                           | 0811/5.0        |
| 28 Sep | Sat | Autumn Race 3           | 1430  | TBC from entries                | 1509/4.0        |
| 05 Oct | Sat | Autumn Race 4           | 1430  | Jubilant                        | 1229/3.8        |
| 12 Oct | Sat | Autumn Race 5           | 1430  | Free Spirit                     | 0705/5.2        |
| 19 Oct | Sat | Autumn Race 6           | 1430  | Xocet                           | 1323/3.8        |
| 26 Oct | Sat | Frostbite Race 1        | 1400  | RO TBC from Entrants            | 0622/4.8        |
| 09 Nov | Sat | Frostbite Race 2        | 1400  |                                 | 1050/4.1        |
| 23 Nov | Sat | Frostbite Race 3        | 1400  |                                 | 1056/4.0        |
| 23 Nov | Sat | Prizegiving Crew Supper | 18:30 | UTC in Nov and Dec              |                 |
| 07 Dec | Sat | Frostbite Race 4        | 1400  |                                 | 0943/4.4        |
| 14 Dec | Sat | Frostbite Race 5        | 1030  |                                 | 1711/4.7        |
| 28 Dec | Sat | Frostbite FUN RACE      | 1030  |                                 | 1617/4.2        |

## Other Sailing Events in Dartmouth 2024

|              |         |  |          |
|--------------|---------|--|----------|
| 11 May       | Sat     | Torbay-Salcombe Race                       | RTYC     |
| 12 May       | Sun     | Salcombe-Torbay Race                       | RTYC     |
| 18-19 May    | Sat-Sun | 3 Creeks Event                             | Yealm YC |
| 6-8 Jun      | Thu-Sat | Richard Mille Cup Superyachts in Dartmouth |          |
| 29 Jul 2 Aug | Mo-Fri  | Junior Sailing Regatta Week                | JS       |

## RACING DOCUMENTS 2024

**Advisory Note:** *The Notice of Race contains information competitors may require before racing and the Sailing Instructions are principally an 'on the water' document. In general Rules in the NoR and SI are not duplicated, therefore competitors should read both documents prior to racing. Text in these documents in 'Italics' is advisory.*

### **ORGANIZING AUTHORITY.**

The Royal Dart Yacht Club is the Organising Authority (OA) for the races specified in the RDYC 2024 Racing Programme except as noted in Exclusions below.

### **Exclusions**

The following Notice of Race and associated Sailing Instructions do not apply to the RDYC Corinthian Class, Dartmouth Royal Regatta and events organised by other yacht clubs. These events are all subject to separate Notice of Race and Sailing Instructions.

01803 839196

**Dart Sails and Covers**

[www.dartsailsandcovers.co.uk](http://www.dartsailsandcovers.co.uk)

Friendly, professional advice with excellent service

Specialists in all things sails and covers

We create, maintain, refurbish and repair  
with service packages to suit all

Please contact us for details



# NOTICE OF RACE (NoR) 2024

The notation [DP] in a rule in the NOR or SI means that the penalty for a breach of that rule may, at the discretion of the protest committee, be less than disqualification.

The notation [NP] in a rule in the NOR or SI means that a boat may not protest another boat for breaking that rule. This changes RRS 60.1(a).

## 1. RULES

1.1 All races are governed by the rules as defined in **The Racing Rules of Sailing (RRS)**, including Appendix WP (*Permits the use of a Waypoint instead of a Mark*).

Competitors are expected to abide by the RYA Racing Charter.

*Advisory note: RDYC Corinthian Class boats race under the RRS and may be in the same area as boats covered by this NoR. Therefore RRS Part 2 rules apply when boats meet.*

1.2 The RRS are changed as follows:

1.2.1 RRS63 (Hearings) is amended to allow Arbitration.

1.2.2 RRS Appendix RV, Reduced Visibility, replaces RRS Part 2 from sunset to sunrise.

1.2.3 RRS 52 (Manual Power) shall not apply.

1.2.4 RRS 33 is amended (next leg of course may be changed by VHF transmission).

1.3 IRC classes:

1.3.1 IRC part C shall apply (advertising permitted)

1.3.2 IRC Rule 22.4 shall not apply; there will be no limitations on crew number or weight.

1.3.3 IRC rule 15.2(d) shall not apply. Stored power may be used for steering in all races.

1.3.4 IRC Rule 8.2 and 8.2.1(c) – the rating deadline to declare primary or secondary certificate for a series shall be when entering that series.

1.4 National Squibs shall comply fully with their class rules.

1.5 [NP]Safety Regulations

1.5.1 Safety equipment

(a) Races East of Start Point

Squibs, Devon Yawls, Tofinou 7's and other day boats shall comply with their class rules regarding internal buoyancy and safety.

All other boats shall comply with World Sailing Offshore Special Regulations (OSR) Appendix B for inshore Racing.

*OSR Appendix B includes (but is not limited to):*

*Personal flotation to 150N for each crew, bucket, anchor, compass, lifebuoy and heaving line.*

Boats with electrical systems, cookers or engines must carry fire extinguishers.

Full requirements at <http://www.sailing.org/specialregs>

(b) Races Passing West of Start Point

All boats in Coastal Races shall comply with OSR Category 4 equipment. Yachts carrying an EPIRB, or a PLB attached to at least one crewmember, may choose to carry an Electronic Visual Distress Signal in place of pyrotechnic flares in accordance with current RYA advice.

*OSR Category 4 includes (but is not limited to):*

*Navigation Lights, anchor, VHF Radio, lifelines, 2 fire extinguishers, inflatable personal flotation devices to EN150, Bilge Pump, 2 buckets, flares, foghorn and first aid kit.*

#### 1.5.2 Personal Flotation Devices

- RRS 40.1 (Personal Flotation to be worn) applies at all times to National Squibs, open decked boats and boats without guardwires.
- When racing outside the castles, at the race officers discretion, or if the wind strength is expected to be Force 5 or above, RRS40.1 shall apply to all competitors. (Flag Y will be flown ashore and/or afloat)

#### 1.5.3 VHF radio

All boats shall carry a Marine VHF radio, either permanently installed or a waterproof portable. *Boats shall monitor the designated race management channel at all times while intending to, or participating in racing.*

#### 1.5.4 Engines

All boats shall have a working engine and fuel sufficient to get them back into the river against a foul tide and in the absence of wind, or alternatively their own support team.

## 2. SAILING INSTRUCTIONS are on page **XX**



# LR RIGGING

DARTMOUTH • DEVON

**Honest Advice and Accurate Pricing**



## **A FULL RANGE OF RIGGING SERVICES FOR CRUISING, RACING AND CLASSIC YACHTS**

### **SERVICES:**

- Spars
- Deck hardware
- Wire, rope & carbon fibre
- Modern & traditional
- Steel & aluminium fabrication
- Leatherwork
- Winch servicing
- Splicing
- Furling gear
- Guardwires

**01803 840160 • [lee@leerogersrigging.co.uk](mailto:lee@leerogersrigging.co.uk)  
[www.leerogersrigging.co.uk](http://www.leerogersrigging.co.uk)**

### 3. COMMUNICATION

3.1 The online official notice board is located at:

<https://royaldart.co.uk/sail/racing-1/racing-noticeboard>

3.2 Alerts for new postings on the online official notice board and pre race information will be broadcast on the WhatsApp Group 'RDYC Racing'. Membership of the group can be arranged via [racing@royaldart.co.uk](mailto:racing@royaldart.co.uk).

3.3 On the water, the race committee will make broadcasts to competitors on VHF radio channel 37A (M1) (or an alternative channel designated in the Sailing Instructions)

3.4 [DP] While racing, except in an emergency, a boat shall not make voice or data transmissions and shall not receive voice or data communication that is not available to all boats.

### 4. ELIGIBILITY, ENTRY AND FEES

4.1 Races are open to boats entered by a **RDYC full member only**, with the following exception: Coastal Series events are open to members of local clubs subject to completion of the RDYC Entry Form no later than 1800 the day before the race.

4.2 All boats competing in any races in this programme shall complete a Race Entry Form available from the RDYC website or the Sailing Office and either send via email to [racing@royaldart.co.uk](mailto:racing@royaldart.co.uk) or deliver to the club FAO the Sailing Committee no later than 1st April 2024.

4.3 All boats shall, by entering any race, confirm their acceptance of and compliance with the Notice of Race and understanding of the Safety Briefing Appendix (on page XX).

4.4 There are no race fees.

### 5. CLASSES, HANDICAPS AND SERIES

5.1 Class 1 and Class 2

5.1.1 The Racing Committee will allocate boats to Class 1 or 2 at its discretion.

Race results will be calculated using IRC ratings. An additional result may be calculated using TCF-Golf.

5.1.2 IRC Non-Spinnaker

A boat may declare herself 'Non-spinnaker' and race under her non-spinnaker TCC for a series by advising the Sailing Committee before the first race in that series.

A boat may declare herself 'Non-spinnaker' for a race, and obtain a time allowance, provided she declares 'Non-spinnaker' on the 'RDYC Racing' WhatsApp group before the warning signal. The Non-spinnaker time allowance shall be 1 minute for races in Start Bay and 3 minutes for Coastal races.

5.1.3 Class 1 Double-handed Division

A boat can qualify for the double-handed division for a series by notifying the Race Committee that it intends to race double-handed for that entire series.

handed boats will also qualify for the fully crewed series.

5.1.4 Boats without an IRC Rating will be allocated to Class 1 or 2 at the Racing Committee's discretion. Their results may be calculated using the TCF-Golf, but will not be eligible for series trophies.

5.2 Class 3 will comprise Squibs and any similar boats which are below the 5m minimum length for IRC.

for Class 3 will comprise:

- Separate class results for Squibs.
- An overall result based on PY or its local equivalent.
- An additional result may be calculated using TCF-Golf.

### 5.3 TCF-Golf

- Yachts will start with the handicap determined by Halsail from races in 2023.
- Handicaps for Wednesday racing will be revised on completion of each Wednesday series as indicated by Halsail.
- New boats will start with their IRC rating until enough races have been completed to allow a fairer handicap.
- Boats with no rating will start with an estimated rating until enough races have been completed to allow a fairer handicap.

### 5.4 Combined Results for a Series with Insufficient Entries.

Class 1, 2 and 3 results may be combined into a single IRC and a single TCF-Golf result where entries in a series are insufficient to warrant separate class results.

## 6. CREW LIMITATIONS

- IRC – see NoR 1.3.2
- National Squib - see NoR 1.4
- Class 1 Double-handed Division – One helmsman plus one crew permitted.

## 7. ADVERTISING

Advertising may be displayed in accordance with the World Sailing Advertising Code.

## 8. SCHEDULE

The schedule of Races can be found in the **Racing Programme page XX** and at <https://royaldart.co.uk/racing>.

## 9. VENUE

The racing venue is Start Bay and the River Dart. For the Coastal Series the venue is extended to include coastal waters between Teignmouth and Plymouth.

## 10. COURSES

Courses are described in the Sailing Instructions Course Appendix.

## 12. SCORING

12.1 One race is required to be completed to constitute a series.

- Wednesday Series: One discard will be allowed if four or five races are completed and two discards if six, seven or eight races are completed.
- Day Race, Autumn and Frostbite Saturday Series: 50% of completed races rounded up shall count.
- Overall series, where more than one series are combined into a result, 50% of completed races rounded up shall count.

12.2 RRS A5.3 shall apply to all series.

12.3 Results will be posted on the RDYC Website <https://royaldart.co.uk/racing-results>.

12.4 When an owner acts as Race Officer and, as a consequence, his boat is unable to compete, the boat will be scored her average points (less discards) for that series. *(This is entered as 'RDG Av excluding DNC' on the HAL system.)*

### **13. DATA PROTECTION**

The personal information you provide to the organizing authority will be used to facilitate your participation in the event. If you have agreed to be bound by the Racing Rules of Sailing and the other rules that govern the event (the rules), the legal basis for processing that personal information is contract. If you are not bound by the rules, the legal basis for processing that personal information is legitimate interest. Your personal information will be stored and used in accordance with the organizing authority's privacy policy. When required by the rules, personal information may be shared with the RYA, your national authority and/or World Sailing. The results of the event and the outcome of any hearing or appeal may be published.

### **14. RIGHTS TO USE THE NAME AND LIKENESS**

By participating in any race in the schedule, competitors automatically grant to the organising authority the right to make use and show, at their discretion, any photograph, audio and video recordings and other reproduction of them made before, during or after such race, without compensation.

### **15. RISK STATEMENT: All crews shall read this statement.**

Rule 3 of the Racing Rules of Sailing states:

**“The responsibility for a boat’s decision to participate in a race or to continue racing is hers alone.”**

Sailing is by its nature an unpredictable sport and therefore inherently involves an element of risk. By taking part in the event each competitor acknowledges that:

- a. They are aware of the inherent element of risk involved in the sport and accept responsibility for the exposure of themselves, their crew and their boat to such inherent risk while taking part in the event:
- b. They are responsible for the safety of themselves, their crew, their boat and other property when afloat or ashore:
- c. They accept responsibility for any injury, damage or loss to the extent caused by their own actions or omissions:

- d. Their boat is in good order, equipped to sail in the event and they are fit to participate:
- e. The provision of a race management team and other officials and volunteers by the event organiser does not relieve them of their own responsibilities.
- f. Patrol boats and safety boats are not provided.
- g. It is their responsibility to familiarise themselves with any risks specific to this venue or this event drawn to their attention in any rules and information produced for the venue or event and to read the Safety Briefing on page 8.
- h. For offshore races they are responsible for ensuring that their boat is equipped and seaworthy so as to be able to face extremes of weather: that there is crew sufficient in number, experience and fitness to withstand such weather: and that the safety equipment is properly maintained, stowed and in date and is familiar to the crew.

## **16. INSURANCE**

Each participating boat shall be insured with valid third-party liability insurance with a minimum cover of £3 million per incident or the equivalent.

## **17. PRIZES**

Prizes will be awarded to the winner of each series and may also be awarded to second and third places.

## **18. RACE OFFICER DUTY**

Competing boats shall be prepared to supply a team to start and manage a race as indicated in the programme. Allocations for duties are in the **Sailing Programme**. If a boat is unable to fulfil her duty, in the first instance she shall try to arrange a swap with another boat. If a swap is not possible, contact the RDYC office for assistance.

Inexperienced race teams may contact the RDYC office to request help.

## **19. RDYC WEBSITE.**

Copies of this Notice of Race, Sailing Instructions and entry forms are on the RDYC website (<https://royaldart.co.uk/sail/racing-1/racing-information>). In the event of a discrepancy the printed version as amended by any changes to the Sailing Instructions posted on the online official notice board shall be the definitive version.

*(Regatta documents are on Dartmouth Royal Regatta Sailing Week website <http://www.dartmouthsailingweek.com/>.)*

End of Notice of Race

# SAILING INSTRUCTIONS 2024

(These SI apply as defined in the preceding NoR)

## 1. RULES

All races are governed by the rules as defined in **The Racing Rules of Sailing (RRS)**.

## 2. CHANGES TO SAILING INSTRUCTIONS

2.1 Changes to the sailing instructions will be posted on the online official notice board at least one hour prior to the scheduled start time of the first race to which the change applies, with an alert on the 'RDYC Racing' WhatsApp group. Flag L will not be displayed – this changes RRS Race Signals.

2.2. Changes to Sailing Instructions may be made on the water by communicating verbally or on VHF radio by the race committee in accordance with RRS 90.2(c).

## 3 COMMUNICATIONS WITH COMPETITORS

3.1 Notices to competitors will be posted on the online official notice board (<https://royaldart.co.uk/sail/racing-1/racing-noticeboard> ) and alerted via the 'RDYC Racing' WhatsApp group.

3.2 Pre-race information such as postponement, alternative start lines, etc will be communicated via the 'RDYC Racing' WhatsApp group.

3.3 On the water, the race committee intends to monitor and communicate with competitors on VHF radio channel 37a (M1).

If the race committee boat displays flag L, alternative VHF channel 72 will be used.

This adds to the meaning of flag L in Race Signals.

Failure to receive any transmission shall not be grounds for redress. This changes rule 62.1(a).

3.4 The following communications will be made by VHF radio:

- Course information
- Time checks
- Changes to starting sequences

3.5 The following communications may be made by VHF radio:

- Mandatory requirement to wear a personal flotation device.
- Changes to Sailing Instructions.
- Starting signals, recalls, postponement, shorten course and abandonment signals.

3.6 Visual signals may not be used - This changes RRS26 and Race Signals.

## 4 CODE OF CONDUCT

[DP] Competitors and support persons shall comply with reasonable requests from race officials.

## 5 SIGNALS MADE ASHORE

The following pre-race flag signals may be displayed on the RDYC signal mast:

Flag H (with individual class flag(s) where appropriate) - All or designated classes will start from the RDYC club line.

Flag Y – All boat crew shall wear a personal flotation device to EN150 - this amends RRS40.2(b).

Flag N over A (and class flags where appropriate) – Races for all or designated classes are abandoned.

## 7. SCHEDULE OF RACES

6.1 The schedule can be found in the Racing Programme or at [royaldart.co.uk/racing](http://royaldart.co.uk/racing)

6.2 Start times for the first start are in the Racing Programme. (*Note the early start times for Wednesday Evening races at each end of the season*).

6.3 Wednesday Evening starting sequence (except the Start Up series)

| Starting Order | Class   | Class Flag | Time after first start |
|----------------|---------|------------|------------------------|
| First          | Class 3 | NP 3       | 0                      |
| Second         | Class 2 | NP 2       | +5 mins                |
| Third          | Class 1 | NP 1       | +10 mins               |

A general recall, or postponement, may cause the starting interval to be extended. Class(es) subject to a general recall shall start in sequence after the last scheduled start.

6.4 Wednesday Start Up, Coastal, Autumn and Frostbite Series: All classes will start together.

## 7 CLASS FLAGS

7.1 See table in SI 7.3.

7.2 Boats other than Squibs shall display their class flag on their backstay (or close to the stern if no backstay available).

*Advisory note: For identification purposes, RDYC Corinthian class boats will display Numeral 5 – see NoR 1.1.*

## 8 COURSES, MARKS AND RESTRICTED AREAS.

8.1 Courses will be selected from those given in the Courses Appendix.

<https://royaldart.co.uk/sail/racing-1/racing-information>

8.2 Marks are described in the same Appendix.

8.3 Restrictions in the Racing Area are defined in Section 4 of the Courses Appendix. Other hazards to navigation exist and safe navigation is the sole responsibility of a boat's crew.

## 9 THE START

9.1 Races will be started using RRS 26 with the warning signal made 5 minutes before the starting signal.

9.2 Starting arrangements are given in the Courses Appendix.

9.3 When a race committee boat is not available, a designated RDYC competitor will act as the starting boat by broadcasting a time check, course and RRS26 times on VHF Ch M1 (37a). Visual and sound signals will not be made. This changes RRS26 and Race Signals.



9.4 For races involving a series of starts only, a boat that does not start within four minutes after her starting signal will be scored Did Not Start without a hearing. This changes RRS A5.1 and A 5.2

*Advisory note: if the majority of boats have not started after 4 minutes, the RO may Abandon and restart the race – see RRS32.1(d)*

## **10 THE FINISH**

10.1 Finishing arrangements are given in the Courses Appendix.

10.2 When a race committee boat is not available at the finish, boats shall note their own finish time using GPS time. Where practicable, boats ahead and astern shall be noted. Times shall be advised by email to [racing@royaldart.co.uk](mailto:racing@royaldart.co.uk) or WhatsApp as soon as possible after finishing.

## **11. POST-RACE PENALTIES**

RRS Appendix T1 applies..

## **12. TIME LIMITS (Changes RRS 35)**

The following time limits shall apply:

| <b>SERIES</b>           | <b>TIME LIMIT</b>                         | <b>EXTENSION</b>             |
|-------------------------|---|------------------------------|
| Wednesday               | 20:15                                     | 30 minutes, ie to 20:45      |
| Round the cans day race | 3 hours                                   | 1 hour, i.e. to 4 hours      |
| Autumn                  | 3 hours                                   | 1 hour, i.e. to 4 hours      |
| Frostbite               | 2 hours                                   | 30 minutes, i.e. to 2½ hours |
| Coastal                 | Specified in ‘Courses for Coastal Series’ |                              |

The extension shall apply if at least one boat in that class has finished within the time limit.

The Race Officer may, before the start, impose an earlier time limit with a shorter or no extension if conditions require it, e.g. the time limit or it’s extension would be after sunset.

If no boat finishes within the time limit, or the Race Officer decides that it is unlikely that any boat will finish within the time limit, the race may be retrospectively shortened by an announcement on VHF and times for completion of the previous lap may be used to determine results.

## **13. HEARING REQUESTS**

13.1 The protest time limit is two hours after the last boat has finished the race of the day.

13.2 Hearing request forms are available from the online notice board or on request from the sailing committee.

13.3 Notices will be posted on the online notice board no later than 30 minutes after the protest time limit to inform competitors of hearings in which they are parties or named as witnesses.

13.4 When a protest is lodged, a boat may at the same time request Arbitration under RRS Appendix T or the protest committee or race committee may offer it.

# ADDITIONAL SIs FOR COASTAL SERIES

## 1. RACE CONTROL, RDYC REPRESENTATIVE AND VHF RADIO COMMUNICATION

1.1 There will be a single start for Class 1 and Class 2.

1.2 A designated RDYC competitor will act as the starting boat by broadcasting a time check and RRS26 times on VHF Ch M1 (37a). Visual & sound signals will not be made - This changes RRS 26 and Race Signals. Failure to receive any transmission shall not be grounds for redress. This changes RRS 62.1(a).

## 2. SELF-TIMING, TIME LIMITS, REPORTING TIMES

2.1 Boats shall record their finishing time using GPS time. Where practicable, boats ahead and astern shall be noted.

2.2 Time limits are specified in the Courses Appendix. The time limit will be extended by two hours if one or more boats finish the course within the time limit - This changes RRS 35.

2.3 Finishing times shall be notified no later than 14:00 on the Monday following the race by one of the following means:

- email to [racing@royaldart.co.uk](mailto:racing@royaldart.co.uk)
- 'RDYC Racing' WhatsApp group
- Telephone RDYC office (01803 752496)
- Direct to the RDYC representative by VHF or Text Message.

## 3. HEARING REQUESTS

Protests forms must be handed to the RDYC representative, or notified to the RDYC office by e-mail or telephone by 14:00 on the Monday following the race.

## 4. RESULTS AND PRIZES

Results will be displayed on the RDYC website <https://royaldart.co.uk/racing-results>. Prizes will be awarded to the winning yacht and subsequent places at the sailing committee's discretion



**BALTIC WHARF REPAIRS**  
*Osmosis Treatments, Coppercoat, Insurance Repairs, Paint Work, Bowthrusters and Routine Maintenance*

**01803 867 474**  
**07779 022 708**

Please call to discuss your requirements or visit us at [www.balticwharfrepairs.co.uk](http://www.balticwharfrepairs.co.uk)

St. Peter's Quay, Totnes, Devon TQ9 5EW. Email: [dave@balticwharfrepairs.co.uk](mailto:dave@balticwharfrepairs.co.uk)

# SAFETY BRIEFING APPENDIX

## to Notice of Race and Sailing Instructions

- a) All crew must read and acknowledge understanding of the NoR Risk Assessment.
- b) The person in charge and their deputy shall be identified before participating in racing.
- c) Coastal hazards to navigation exist in the racing area(s). Safe navigation of the boat is the crews' responsibility.
- d) Competitors are reminded that patrol boats are not provided; therefore it is a condition of racing that all RDYC boats shall carry a VHF radio and a means of returning to the river (i.e. an engine or support boat).
- e) The safety equipment for the intended race area shall be indentified. All equipment must function properly, be regularly checked, be suitable for the size and intended use of the boat, and the crew appropriately trained in its use.
- f) In the first instance, a yacht shall try to rectify a minor safety incident itself, without recourse to external help.
- g) If the safety incident cannot be rectified immediately by the boat itself, and always in the event of a man overboard, the yacht shall call for help, e.g. by VHF radio Channel 37a (M1).
- h) All competitors are bound to render assistance on receipt of such a call – RRS Rule 1.1.**

(Yachts rendering assistance will be entitled to claim redress (RRS Rule 62.1(c)).

- i) If the victim yacht decides that help from another yacht is unlikely to rectify the situation, or help is not forthcoming, then the yacht shall escalate the situation by calling the Coastguard on Channel 16. A MAYDAY should be used if there is imminent danger to life. A Pan-Pan (urgency) call is appropriate to inform the coastguard of the problem and what you are doing about it, and will speed the response if you later issue a MAYDAY.
- j) If a casualty has to be transferred ashore, unless instructed otherwise, the best access to the shore/ambulance is the inner visitors' pontoon at Darthaven. If giving directions to the ambulance service, postcode **TQ6 0SG** can be used. The Harbour Master has a reserved space here which is kept vacant. DHNA river officers are on duty (until 1900 in April and October and 2300 between May and September) and can be contacted on Channel 11 to help with berthing.

A fuller Safety Briefing with examples of Safety Incidents and their resolution, can be found on the RDYC website <https://royaldart.co.uk/media/files/site/Safety-Briefing.pdf>

# COURSE APPENDIX 2024

*Courses for Start Bay races are shown first, courses for the Coastal Series follow. Words in italics are advisory and do not constitute part of the Course Instructions.*

*Yachts should listen on VHF Ch M1 (37a) for course instructions, changes to SI and starting instructions. Exceptionally VHF Ch 72 may be used for Class 1.*

## 1. Signalling the course: Listed Courses

The course will normally be communicated by VHF Ch M1 (37a). The course may be changed between successive starts. Exceptionally the course may be displayed by boards showing the Class(es), followed by course letter and number.

## 2. Alternative courses

An alternative course may be set by describing the start line, each mark and its rounding direction in sequence and the finish line. Exceptionally, boards indicating the individual marks to round in order may be used. A red board indicates leave to port: a green board indicates leave to starboard.

## 3. Start and Finish Lines

**Blackstone Point (BP)** Prolongation of the line joining the two white flag staffs at Blackstone Point, with Castle Ledge Buoy as the Outer Distance Mark (ODM).

If a committee boat is present, it will be positioned as the inner distance mark and the line will be between the boat and Castle Ledge.

**Committee Boat (CB)** Between the main mast of the Committee Boat and the ODM, which is the nearest adjacent mark. When a mark forms part of the Start or Finish Line it is omitted as a rounding mark on that leg.

**RDYC Club Line (CL)** The transit of the RDYC Flagpole and outermost downriver pontoon pile. An orange tetrahedral or spherical ODM may be laid.

## 4. Restrictions on Sailing Area

While racing, boats shall not pass between any of the following and the shore: Western Blackstone Rock, West Rock Buoy, Mew Stone Rocks, Combe Rocks, Dancing Beggars Rocks, Cod Rock (off Berry head) and Blackstone Rock (off Start Point).

**West Rock Buoy (R) shall be passed to seaward EXCEPT when it is used as a rounding mark.**

*When West Rock Buoy (R) is used as a mark of the course, boats should stay close to it when rounding as the West Rock is awash at low tide and lies about 200m NW of the buoy.*

**Boats must not impede the Higher or Lower Ferries or any other passenger ferries at any time.**

## 5. Mark Rounding

5.1 Direction of Rounding 's' means leave or round mark to starboard, 'p' to port.

5.2 All marks are rounding marks except H which may be a passing mark on certain courses.

## 6. Shorten Course

In Course Groups A-F the Shorten Course will finish at the mark shown in red with square brackets.

However, if conditions require it a Committee Boat may take up station at any mark of the course and announcing Shorten Course on VHF by flying the Shorten Course signal to finish.

## 7. Marks and approximate positions (WGS84)

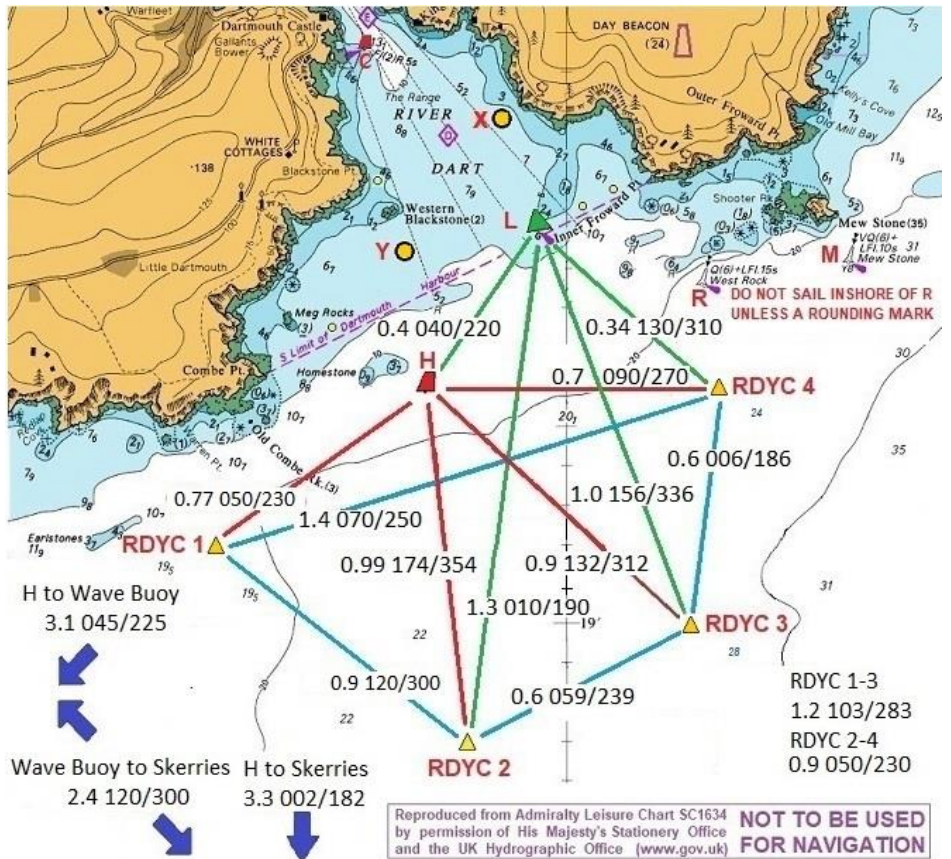
|            |  |  |
|------------|--|--|
| <b>ODM</b> | Nearest mark to the CB   | <i>(which may be H, L, C, T, Y, Z, 1, 2, 3, 4)</i> |
| <b>H</b>   | Homestone, red can buoy,   | 50d 19.61'N, 3d 33.55'W                            |
| <b>M</b>   | Mewstone Buoy, south cardinal buoy                                     | 50d 19.92'N, 3d 31.89'W                            |
| <b>R</b>   | West Rock Buoy, south cardinal buoy                                    | 50d 19.86'N, 3d 32.47'W                            |
| <b>L</b>   | Castle Ledge Buoy, green conical buoy                                  | 50d 19.99'N, 3d 33.11'W                            |
| <b>C</b>   | Checkstone, red can buoy   | 50d 20.45'N, 3d 33.81'W                            |
| <b>X</b>   | Yellow 6 knot buoy<br><i>(off Wash Point, N of Newf'nd Cove)</i>       | 50d 20.30'N, 3d 33.3'W                             |
| <b>Y</b>   | Yellow 6 knot buoy<br><i>(due N Homestone, close to W. Blackstone)</i> | 50d 19.98'N, 3d 33.66'W                            |
| <b>1</b>   | RDYC 1, yellow conical buoy with number                                | 50d 19.11'N 3d 34.49'W                             |
| <b>2</b>   | RDYC 2, yellow conical buoy with number                                | 50d 18.7'N 3d 33.4'W                               |
| <b>3</b>   | RDYC 3, yellow conical buoy with number                                | 50d 19.0'N 3d 32.5'W                               |
| <b>4</b>   | RDYC 4, yellow conical buoy with number                                | 50d 19.6'N 3d 32.4'W                               |
| <b>T</b>   | Temporary orange tetrahedral or lozenge buoy                           | <i>may also replace X or Y.</i>                    |
| <b>T1</b>  | Temporary orange tetrahedral or lozenge buoy                           | <i>near Kingswear Castle</i>                       |
| <b>T2</b>  | Temporary orange tetrahedral or lozenge buoy                           | <i>laid upriver</i>                                |
| <b>S</b>   | Skerries, red can buoy   | 50d 16.3d'N, 3d 33.78'W                            |
| <b>W</b>   | Wave Buoy <i>(3m SW of Home)*</i>                                      | 50d 17.50'N, 3d 36.97'W                            |

*\*The wave buoy has 2 associated orange floats which may lie 30m from the buoy itself. These floats shall be considered an extension of the Wave Buoy and rounded accordingly.*

# COURSE MAP 2024

Course Group advice to Race Officers.

| Series           | Class 1    | Class 2 & 3  | Combined Classes | Light wind |
|------------------|------------|--------------|------------------|------------|
| Wednesday Races  | Group A    | Group B      | -                | Group C    |
| Saturday Races   | Group D, E | Group E or F | Group D, E or F  | Group F    |
| Frostbite Series | -          | -            | Group E or F     | Group F    |



# COURSES IN START BAY & RIVER DART 2024

**A & B: Normal Inshore Courses** with a committee boat.

*A courses are longer courses for Class 1.*

*B courses are shorter ones for Class 2 and Class 3.*

*The Shorten Course will finish at the mark shown in red and square brackets.*

*Shorten course length in brackets. Information in Italics is advisory only.*

## 1. Wind South West

|    |                                      |              |
|----|--------------------------------------|--------------|
| A1 | Start at L 1p 2p [Lp] 1p finish at L | 5.8 (3.3) NM |
| B1 | Start at L 1p 2p [Lp] Hp finish at L | 4.3 (3.3) NM |

## 2. Wind South

|    |   |              |
|----|---|--------------|
| A2 | Start at L 2s 1s [Hs] Ls 2s finish at H | 5.7 (3.0) NM |
| B2 | Start at L 2s 1s [Hs] 2s finish at H    | 4.9 (3.0) NM |

## 3. Wind South East

*Start between 'T' and Committee Boat placed NW of Home to create a longer beat*

|    |   |              |
|----|---|--------------|
| A3 | Start at T 3s 1s Ts [Hs] 3s finish at H | 5.8 (3.7) NM |
| B3 | Start at T 3s Ts [Hs] 3s finish at H    | 4.5 (2.7) NM |

## 4. Wind East

*Start between 'T' and Committee Boat placed W of Home to create a longer beat.*

*If swell severe consider E4/F4 from CB on BP line.*

|    |  |              |
|----|--|--------------|
| A4 | Start at T 4s 3s Ts [Hs] 4s Ts finish at H | 5.0 (3.0) NM |
| B4 | Not used. All classes sail A4              |              |

## 5. Wind North East

|    |  |              |
|----|--|--------------|
| A5 | Start at H Ls 3s 1s [Hs] Ls 1s finish at H | 6.2 (3.6) NM |
| B5 | Start at H Ls 3s 1s [Hs] 1s finish at H    | 5.1 (3.6) NM |

## 6. Wind North

|    |  |              |
|----|--|--------------|
| A6 | Start at H Yp 1p 2p [Hp] Tp 2p finish at H | 5.5 (3.0) NM |
| B6 | Start at H Yp 1p 2p [Hp] 2p finish at H    | 4.9 (3.0) NM |

## 7. Wind North West

*'T' placed NW of Home to give a short first windward leg.*

|    |  |              |
|----|--|--------------|
| A7 | Start at H Tp 1p 3p [Hp] Tp 3p finish at H | 5.7 (3.3) NM |
| B7 | Start at H Tp 2p 3p [Hp] 3p finish at H    | 4.9 (3.0) NM |

## 8. Wind West

*'T' placed W of Home to create a longer beat. May use 1 instead of 'T' A8X).*

|     |  |              |
|-----|--|--------------|
| A8  | Start at 4 Tp 2p 4p [Hp] Tp 4p finish at H | 5.8 (3.8) NM |
| A8X | Start at 4 1p 2p 4p [Hp] 4p finish at H    | 5.5 (3.8) NM |
| B8  | Start at 4 Hp 3p 4p [Hp] 4p finish at H    | 4.5 (3.0) NM |

## 9. All Directions: Windward - Leeward Course

CB start line at Leeward Mark (LM). Windward Mark (WM) advised by VHF.

|    |   |  |
|----|---|--|
| A9 | Start at LM, repeat lap WMp LMP until shorten course signal, finish at [LM] |  |
|----|---|--|

## **C: Short Inshore Courses with a Committee Boat, for light winds**

*C courses must be used for all classes as start and finish lines may not be compatible with A and B courses.*

|                           |   |              |
|---------------------------|---|--------------|
| <b>1. Wind South West</b> |   |              |
| C1                        | Start at H 1p 2p [Hp] 1p Finish at H                              | 4.2 (2.6) NM |
| <b>2. Wind South</b>      |   |              |
| C2                        | Start at H 2s 1s [Hs] 2s Finish at H                              | 4.4 (2.6) NM |
| <b>3. Wind South East</b> |   |              |
| C3                        | Start at H 3p 4p [Hp] 3p Finish at H                              | 4.0 (2.2) NM |
| <b>4. Wind East</b>       |   |              |
| C4                        | Start at H 4s 3s [Hs] 4s Finish at H                              | 3.7 (2.2) NM |
| <b>5. Wind North East</b> |   |              |
| C5                        | Start at H Ls 3s Hs [Ls] Hs Finish at L (can also Finish at [H] ) | 4.0 (3.0) NM |
| <b>6. Wind North</b>      |   |              |
| C6                        | Start at H Tp 2p [Hp] 2p Finish at H                              | 4.3 (2.4) NM |
| <b>7. Wind North West</b> |   |              |
| C7                        | Start at H Tp 3p [Hp] 3p Finish at H                              | 4.2 (2.4) NM |
| <b>8. Wind West</b>       |   |              |
| C8                        | Start at 4 Hp 3p [4p] Hp Finish at 4 (can also Finish at H)       | 3.7 (2.2) NM |

## **D: Longer Courses with no committee boat**

*D Courses are suitable for all classes in the Day Race Series in steady winds.*

|                           |                                   |        |
|---------------------------|-----------------------------------|--------|
| <b>1. Wind South West</b> |                                   |        |
| D1                        | Start at BP Wp Sp Finish at BP    | 9.7 NM |
| <b>2. Wind South</b>      |                                   |        |
| D2                        | Start at BP Ss Ws Finish at BP    | 9.7 NM |
| <b>3. Wind South East</b> |                                   |        |
| D3                        | Start at BP 3s 1p Sp Finish at BP | 9.2 NM |
| <b>4. Wind East</b>       |                                   |        |
| D4                        | Start at BP Wp Sp Finish at BP    | 9.7 NM |
| <b>5. Wind North East</b> |                                   |        |
| D5                        | Start at BP Ss Ws Finish at BP    | 9.7 NM |
| <b>6. Wind North</b>      |                                   |        |
| D6                        | Start at BP Wp Sp Finish at BP    | 9.7 NM |
| <b>7. Wind North West</b> |                                   |        |
| D7                        | Start at BP Ss Ws 4p Finish at BP | 9.7 NM |
| <b>8. Wind West</b>       |                                   |        |
| D8                        | Start at BP Ss Ws Finish at BP    | 9.7 NM |



## **E & F: Inshore Courses with no committee boat**

*E courses are for all Classes in the Wednesday, Day Race and Frostbite series in steady winds.*

*F courses are for all Classes in the Wednesday, Day Race and Frostbite series in light winds.*

*All races start and finish on BP line.*

*When a Shorten Course has been broadcast (VHF Ch M1 (37a)), finish on the BP line as the boat approaches the mark in Red and Square Brackets which becomes the ODM and is left to Starboard.*

### **1. Wind South West**

|    |  |              |
|----|--|--------------|
| E1 | Start at BP 1p 2p [Lp] 1p Finish at BP | 5.9 (3.4) NM |
| F1 | Start at BP 1p 2p [Lp] Hs Finish at BP | 4.3 (3.4) NM |

### **2. Wind South**

|    |  |              |
|----|--|--------------|
| E2 | Start at BP 2s 1s [Ls] 2s Finish at BP | 6.0 (3.4) NM |
| F2 | Start at BP 3s Hs [Ls] 3s Finish at BP | 4.7 (2.4) NM |

### **3. Wind South East**

|    |   |              |
|----|---|--------------|
| E3 | Start at BP 1p 2p [Lp] Hp 3p Finish at BP | 6.0 (3.8) NM |
| F3 | Start at BP Hp 3p [Lp] Hp 3p Finish at BP | 4.7 (2.5) NM |

### **4. Wind East**

|    |   |              |
|----|---|--------------|
| E4 | Start at BP 1p 3p [Lp] Hp 4p Finish at BP       | 5.4 (3.5) NM |
| F4 | Start at BP Hp 4p Hp 4p [Lp] Hp 4p Finish at BP | 4.9 (3.0) NM |

### **5. Wind North East**

|    |  |              |
|----|--|--------------|
| E5 | Start at BP 1p Hs 2p 4p [Lp] Hs Finish at BP | 5.6 (4.6) NM |
| F5 | Start at BP 2p 4p [Lp] Hs Finish at BP       | 4.0 (3.0) NM |

### **6. Wind North**

|    |  |              |
|----|--|--------------|
| E6 | Start at BP 2p [Ls] 4s 2s Finish at BP | 5.7 (2.6) NM |
| F6 | Start at BP 2p [Ls] 4s 3s Finish at BP | 4.9 (2.6) NM |

### **7. Wind North West**

|    |  |              |
|----|--|--------------|
| E7 | Start at BP 2s 1s 3p [Ls] 4s Finish at BP    | 5.7 (4.5) NM |
| F7 | Start at BP Hp 3p Hs 4p [Ls] 4s Finish at BP | 4.9 (3.7) NM |

### **8. Wind West**

|    |  |              |
|----|--|--------------|
| E8 | Start at BP 3s 1s [Ls] 4s Hs Finish at BP    | 5.4 (3.6) NM |
| F8 | Start at BP Hp 4s Hs [Ls] 4s Hs Finish at BP | 4.2 (2.5) NM |

## **Z: Courses using Buoys H, 1, 2, Y and T**

*These courses are designed to be used when a cruise ship is scheduled to leave the river during racing.*

The course will be communicated on VHF 37 (M1) and may not have a windward start. All boats must keep clear of the fairway East of Buoys Y and H while the ship is exiting the river.



---

# Goulden & Sons

2 The Old Workshops, St Johns Terrace, Totnes, TQ9 5JH  
01803 867359 | enquiries@gouldenandsons.co.uk

[gouldenandsons.co.uk](http://gouldenandsons.co.uk)

## R: River Courses

*For use when there is either no wind, fog or heavy weather in the range.*

*River courses may be run from the RDYC Terrace or a Committee Boat.*

**Safety Note:** *It is important to minimise the number of times the fleet will cross the ferry tracks.*

### Sea Breeze Course and Strong NW Breeze

*In sea breeze conditions, the best wind is found between the club and Dartmouth Castle. Lay T1 on the inland side of Dartmouth Castle as the wind in the entrance is inconsistent.*

In strong winds, Class1 are prohibited from using spinnakers in the river.

**T1 laid near Kingswear Castle, T2 upstream from CL but well downstream from lower Ferry.**

**R1** Start on CL T1p Lap (T2p T1p) Finish on CL.

*Wind SE*

Repeat the Lap until the Shorten Course is signalled.

### **Breeze further up the river**

*Set the CB start line opposite yellow Ship Buoy MS1 and lay T2 just below the Higher Ferry.*

**R2** Start at MS1 Lap (T2p MS1p) finish at MS1.

Repeat the Lap until the Shorten Course is signalled.

## COURSES FOR COASTAL SERIES RACES 2024

RDYC races in this series are open to RDYC members and members of local yacht clubs provided an RDYC entry form is completed.

RDYC members entering RTYC or BYC races in the series shall complete an entry form for the organising club of the relevant race.

Paragraph 4 (Restrictions on Sailing Area) of the Course Instructions applies to all races.

### Goulden's Gallon of Rum Race of Rum Race

**Date** Sunday 5 May 2024

**Start Time** 11:00. Warning Signal 10:55. Time Limit 6 hours).

**Course** **A:** Start at BP Homestone (p) Skerries (p) Orestone (p) Finish

**B:** Start at BP Homestone (p) Finish

**C:** as communicated by the Committee Boat.

**Finish Line** Between the Race Box on Battery Point and Brixham YC Red Finish Mark (Buoy with red flag 50 d 24'.424N 03 d 31'.33W) crossed from East to West.

### Dart to Yealm Race

**Date** Sat 8 June 2024

**Start Time** 10:00. Warning Signal 0955. Time Limit 8 hours.

**Course** Start at BP, sail direct to Finish Line at Yealm, passing to seaward of Blackstone Rock (off Start Point).

**Finish Line** Prolongation of the line formed by two white poles adjacent to the hut on south side of river Yealm entrance at Mouthstone Point.

**Shorten Course** Boats should time their transit by GPS of Longitude 3d 46.0' West. (on the East side of the entrance to Salcombe). In the event of no finishers this time may be used to determine the results.

### **Yealm to Dart Race**

**Date** Sun 9 June 2024

**Start Time** 0930. Warning Signal 0925. Time Limit 8 hours

**Course** Start at R Yealm sail direct to BP Finish Line at Dartmouth, passing to seaward of Blackstone Rock (off Start Point).

**Start Line** As Yealm Finish Line.

**Shorten Course** Boats should time their transit by GPS of Longitude 3d 46.0' West. (on the East side of the entrance to Salcombe). In the event of no finishers this time may be used to determine the results.

### **Salcombe and Back Race**

**Date** Saturday 10 August 2024

**Start Time** 10:30. Warning Signal 10:25. Time Limit 6 hours.

**Course** Start at BP, SHA Speed Buoy (s), Finish at BP..

**Shorten Course** In the event of calm weather, a shorter course may be specified.

**SHA Speed Buoy** Approx: 50d 13.098'N, 03d 46.494W. There are three Speed Buoys running NE just offshore of the Bar. This is the central one.

### **Dart to Salcombe**

**Date** Saturday 7 September 2024

**Start Time** 1030. Warning Signal 1025. Time Limit 6 hours.

**Course** Start at BP Line, sail direct to Finish Line at Salcombe, passing to seaward of Blackstone Rock (off Start Point).

**Finish Line** Prolongation of the transit between the red and white striped pole on Sandhill Point and the red and white striped beacon on the Poundstone (50d 13.651'N 3d 46.666'W) bearing 000T from seaward limited by the Mew Stone bearing 270T from seaward at seaward end.

### **Salcombe to Dart**

**Date** Sunday 8 September 2024

**Start Time** 0930. Warning Signal 09:25. Time Limit 8 hours.

**Course** Start at Salcombe, sail direct to BP Finish Line at Dartmouth, passing to seaward of Blackstone Rock (off Start Point).

**Start Line** as Salcombe Finish Line crossed from West to East.

**Finish Line** BP line at Dartmouth.



**PREMIER**  
MARINAS ~ NOSS ON DART

Marine Spares Specialists ~ Safety Beacon & Lifejacket Servicing



01803 607299

sales@sparesmarine.co.uk

**www.sparesmarine.co.uk**

Spares Marine, Unit 5F, Noss On Dart Marina, Bridge Road,  
Kingswear, Dartmouth TQ6 0EA, UK

# Ladies Afloat 2024

Ladies Afloat is a very popular section of the Club, which thrives due to the enthusiasm and commitment of its members. We meet at the Club on Thursdays from early spring to October. With experience varying from complete novice to blue-water sailor, we all share a common enthusiasm for being afloat.

Our remit has remained the same over the years: to encourage female members of the RDYC to build skills and confidence, enabling active participation in all Club events. Whether you are new to sailing or have loads of experience, this is a wonderful opportunity to 'get out on the water' and make new friends. Many of our skippers have built confidence through bringing their own boats.

We do not provide formal training courses but there is the opportunity to learn from the wide diversity and depth of skills of our members. Our regular activities include yachting and dinghy sailing with support boats

We co-ordinate our events via a WhatsApp Group and online. To be included in these circulations please contact the RDYC Office or send us an email ([ladiesafloat@royaldart.co.uk](mailto:ladiesafloat@royaldart.co.uk)). If you need help please let us know!

Do join us and you will receive a very warm welcome.

| Date   | Activity                 | Date   | Activity              |
|--------|--------------------------|--------|-----------------------|
| 29 Feb | Winter Workshop          | 11 Jul | Mix And Match Day     |
| 21 Mar | Welcome Day              | 18 Jul | Day Out To Plymouth   |
| 28 Mar | Crewing Skills           | 25 Jul | Mix And Match Day     |
| 4 Apr  | Support Boats            | 1 Aug  | Yachting (Over-Night) |
| 11 Apr | Support Boats            | 8 Aug  | Mix And Match Day     |
| 18 Apr | Safety Day               | 15 Aug | Dinghy 'Regatta' Day  |
| 25 Apr | Support Boat Assessments | 22 Aug | Mix And Match Day     |
| 2 May  | Upriver Flotilla Day     | 5 Sep  | Yachting Day          |
| 9 May  | Mix And Match* Morning   | 12 Sep | Mix And Match Morning |
| 16 May | Yachting Day             | 19 Sep | Cruise To Salcombe    |
| 23 May | Overnight Cruise         | 20 Sep | Home From Salcombe    |
| 24 May | Overnight Cruise         | 26 Sep | Yachting Day          |
| 30 May | Mix And Match Morning    | 3 Oct  | Yachting Day          |
| 6 Jun  | Yachting Day             | 10 Oct | Mix And Match Day     |
| 13 Jun | Mix And Match Day        | 17 Oct | Cruise To Torbay      |
| 20 Jun | Mid Summer Overnight     | 18 Oct | Home From Torbay      |
| 27 Jun | Mix And Match Morning    | 24 Oct | Review 24 And Plan 25 |
| 4 Jul  | Yachting Day             | 12 Dec | Christmas Lunch       |

\* MIX and MATCH events = dinghy half days, day boat half days and yachting.

All timings and locations to be confirmed via 'WhatsApp' group before each event.

All subject to weather and availability of boats)

## BOYS IN BOATS

**Boys in Boats** welcomes all club members for a morning's relaxed sailing usually out in Start Bay on member's boats, encouraging more use of our boats and for everyone, boat owner or not, to sail more.

**We meet on the terrace at 10:00 on Tuesdays** and choose a boat or three from those attending, usually getting back to the club for a bring your own lunch.

**Some weeks** we get up to one of our more adventurous jaunts:

Brixham for Fish and Chips, a day on Lulotte, a Swan 55 yawl and veteran of several Fastnets; a Gaffer Day; Lunch by Launch to the Maltsters at the head of Bow Creek and a Seascape Day.

**Cruising:** In May we go further on a week-long cruise to various watering holes around the coast. This year our target is the Channel Islands.

**Boys in Boots** in December is a thinly disguised excuse to go to a pub or end up back at the club for lunch. We find a walk in the local area first, to justify this.

**Do feel free just to turn up,** but to get details of our events join our mailing list. We also have a WhatsApp group for last minute messages.

**Organiser:** Norman Doidge 07968 375528 [norman.doidge@hotmail.com](mailto:norman.doidge@hotmail.com)

| Date 2024  | Time      | Activity (Tuesdays). All dates provisional.   |
|--|-----------|---|
| Late Mar-Apr   | ¾ day     | Working Party if needed to assist the bosun.  |
| 23 April   | ½ day     | First Day Sailing of the year                 |
| 30 April   | ½ day     | Day Sailing                                   |
| 2, 7, 14 May   | ½ day     | Day Sailing                                   |
| 16-21 May  | Thu-Tue   | Week Cruise to Channel Islands                |
| 28 May, 4 June                                       | ½ day     | Day Sailing                                   |
| 11 June  | ¾ day     | Brixham Fish and Chips HW Dover 1518 BST      |
| 18, 25 June  | ½ day     | Day Sailing                                   |
| 02 July  | Whole day | Back up Torbay for lunch! HW Dover 1539 BST   |
| 9 July   | ½ day     | Day Sailing                                   |
| 16 July  | ¾ day     | Lunch by Launch at Maltsters HW Dmth 1411 BST |
| 23, 30 July  | ½ day     | Day Sailing                                   |
| 6, 13, 20 Aug  | ½ Day     | Day Sailing                                   |
| Gaffer day, Seascape Day to be arranged if possible. |           |   |
| Sept-Oct   |           | Will sail depending on weather                |
| Sept-Oct   |           | End of season working party as needed         |
| 7 December   | 3/4 day   | Christmas Walk and Lunch (Wednesday)          |

# 2024 Sailing Calendar - Cruising & Motorboat Group



|  |  |
|--|--|
| 10 <sup>th</sup> - 11 <sup>th</sup> February           | - Cruising Weekend Forum and Socials, RDYC                     |
| 20 <sup>th</sup> - 21 <sup>st</sup> April              | - Shakedown Cruise to Salcombe                                 |
| 4 <sup>th</sup> - 12 <sup>th</sup> May <sup>WW</sup>   | - Cruise to Fowey and Helford                                  |
| 1 <sup>st</sup> - 2 <sup>nd</sup> June                 | - English Riviera Air Show, Torbay                             |
| 15 <sup>th</sup> June                                  | - Eddystone Charity Sailing Pursuit, Plymouth                  |
| 10 <sup>th</sup> - 20 <sup>th</sup> June <sup>WW</sup> | - Cruise to Isles of Scilly (onward option to S. Ireland)      |
| 30 <sup>th</sup> Jun - 5 <sup>th</sup> July            | - Merlin Rocket Week, Salcombe                                 |
| 12 <sup>th</sup> - 13 <sup>th</sup> July               | - Tunes on the Sands, Blackpool Sands                          |
| 10 <sup>th</sup> - 20 <sup>th</sup> July <sup>WW</sup> | - Cruise to the Channel Islands                                |
| 17 <sup>th</sup> - 25 <sup>th</sup> July               | - Channel Classics Regatta (Dartmouth, St Peter Port, Paimpol) |
| 14 <sup>th</sup> - 15 <sup>th</sup> August             | - British Fireworks Championships, Plymouth                    |
| 24 <sup>th</sup> - 1 <sup>st</sup> September           | - Dartmouth Royal Regatta Sailing Week                         |
| 20 <sup>th</sup> - 21 <sup>st</sup> September          | - Cruise to Salcombe   |

NB. <sup>WW</sup> = Weather Window (to suit Skipper & Crew)

... together with spontaneous local sailing in company, to suit weather and tides.

Informal Friday Night Suppers occur during the season, on weekends that don't clash with other organised events in the clubhouse.

## CRUISING & MOTORBOAT GROUP

Our members enjoy regular cruising along the stunning Devon and Cornwall coast, with occasional hops across the channel. Others venture for longer periods to the Channel Islands and Northern France, Southern Brittany, Ireland, the West Coast of Scotland, or even the Baltic.

**Corinthian Class - *New for 2024***. A racing class for cruisers, but not racing as we have known it. With a separate start away from the jostle of the IRC fleet, white sails only and longer legs, there will be both Double-Handed and Family & Friends classes, to suit all interested in getting out on the water for some friendly competition on Wednesday evenings and Saturdays, with a social and prize giving immediately following in the clubhouse. Some coastal races are also included in the calendar. Details of dates and courses to follow.

Whether we sail as families, friends, couples or single-handed, a busy sailing and social programme is organised throughout the year, so members can get the most from their boats and their RDYC membership. If you would like to receive timely postings to Cruising members, with the odd bit of cruising chat, do join the RDYC Cruising WhatsApp Group, by emailing: [cruising@royaldart.co.uk](mailto:cruising@royaldart.co.uk). Richard Balfry, Cruising Group Co-Ordinator



## **JUNIOR SAILING 2024**

Bringing the joys of sailing to a new generation, the RDYC Junior Sailing Programme remains ever popular with children aged 9-16 yrs. Held every year under the auspices of the RYA, the formal training still allows plenty of time for fun and games. Numbers are limited and priority is given to club members. Junior sailing provides a showcase and vibrant focus for the club each Saturday morning with typically 40 children out on the water. Inevitably, this requires a large pool of volunteers. There are plenty of opportunities for helpers with or without experience to get involved. Contact: Suzanne at [admin@royaldart.co.uk](mailto:admin@royaldart.co.uk)

### **Ready the Boats on Saturday Apr 6th & 13th**

Parents and volunteers are asked to come and help get the boats ready for the sailing season. It takes an lot of work to get the dinghies ready for the season and many hands make it a fun activity.

### **Taster morning Saturday 20th April**

For new sailors who have a place on the course, designed primarily to whet appetites for sailing and allow our RYA approved Instructors to assess abilities and ensure that new sailors are placed in the right training group.

### **Saturday morning course Saturdays May 4th to July 20th**

The full programme runs for 12 weeks on Saturday mornings. Sailors are able to progress through the RYA stages 1-4, with a certificate at the end of each stage. Last year we introduced the "Senior Juniors" to keelboat sailing. They will do RYA Day Sailing, Sailing with Spinnakers, Seamanship and Start Racing Modules in keelboats utilising the two RDYST Seascope 18 Sportsboats for this purpose and we are hopeful of getting more youngsters joining the Club's Yacht racing Fleet. We also provide Assistant Instructors (and any keen parents!) with the opportunity to crew on racing boats on a Saturday afternoons or Wednesday evenings (helming, mainsheet, jib and spinnaker trimming, foredeck work, tactics and navigation).

### **Mini Racing Points Series**

Tue & Thu evenings in July provides junior sailors with a chance to put into practice some of their new-found skills and compete with their peers

### **RDYC Junior Sailing Week**

The RDYC Junior Sailing Week, a fun and action-packed time for all ability levels, runs from 31<sup>st</sup> Jul for 5 days. Please visit <https://royaldart.co.uk/junior-sailing/junior-sailing-week> for full details.

The season finishes in style with the Falling Leaves mini regatta in early September with invitations sent to the other sailing clubs on the Dart.

## Junior Sailing & RDYST Schools Programme 2024

| Dates                         | Time                  | Event                                  |
|-------------------------------|-----------------------|--|
| Sat 6 Apr                     | 9:30-13:00            | Preparing the boats for the season     |
| Sat 13 Apr                    | 9.30-13:00            | Preparing the boats for the season     |
| Sat 20 Apr                    | 10:00- 13:00          | Taster morning & instructor training   |
| 4 May to 20 Jul               | Every Sat 09:30-12:30 | Juniors RYA Training (12 wks)          |
| Dates tbc                     | Friday 17:30          | Friday Family Dinghy Evenings          |
| 4, 11, 18, 25 Jun             | 09:30 – 14:30         | Dartmouth Academy                      |
| Weeks of 1,8, 15 Jul          | Mon-Fri 09:30-14:30   | Local primary schools Yr 6 Taster Days |
| 9, 11, 16, 18, 23, 25, 27 Jul | Tue & Thu 17:00-20:00 | Junior Points Race series              |
| 22 Jul to 4 Aug               | Mon-Fri 09:30-15:00   | RDYC Junior Sailing Week               |
| 7 Sept                        | Sat 09:30-13:30       | Falling Leaves end of season Regatta   |

## FAMILY DINGHY EVENINGS

These evenings are run in the summer months for members to have an informal evening of fun on the water in Quest dinghies with support boat cover. Skill level is varied and parents are welcome to bring their junior sailors along. These evenings are very dependent on weather and having support boat cover and are usually organised via a WhatsApp group. If you would like to take part please contact [office@royaldart.co.uk](mailto:office@royaldart.co.uk) to be sent the joining form and be included in the WhatsApp group. Dates to be confirmed. For more information and dates of courses contact [admin@royaldart.co.uk](mailto:admin@royaldart.co.uk)

## RYA TRAINING

The club is keen that members both increase their skills and keep them up to date, so runs a series of training courses each year, discounted for members. Application forms, details and times are on the website. Check the website <https://royaldart.co.uk/train> for current information.

To drive a club safety boat, members must hold the RYA Powerboat 2 certificate (or an equivalent qualification) and undertake a boat-specific test with Colin Bower or Paul Jewell, our Power Boat Instructors. Safety Boat Drivers for Junior Sailing events, need to do the RYA Safety Boat course. Full details can be found at <https://royaldart.co.uk/rdyc-approved-drivers>

## ROYAL DART YOUTH SAILING TRUST

The RDYST was formed in 2016 as part of the 150th anniversary celebrations of The Royal Dart Sailing Club.

The Dart is a busy, vibrant and integral part of life in South Devon, but it is inaccessible to many local people who should be enjoying its many attractions, especially children from disadvantaged backgrounds who simply cannot afford to get on the water.

The RDYST was founded to enable local youth from less privileged backgrounds to enjoy sailing on the waters of the Dart, under the care and guidance of RYA registered organisations and instructors. We want them to have an opportunity that many of us take for granted.

Sailing in small boats is exciting. It gives children the chance to take responsibility for their craft, learn the mechanics of sailing and enjoy healthy competition. It builds confidence, teamwork and leadership skills in a fun and safe environment. Our programme includes water based activities for youngsters in the age range 10-16 years.

As in earlier years, 150 children from 8 local primary schools enjoyed their first taste of sailing during Schools Weeks in July, along with older pupils taking part in weekly dinghy sailing. We'll be running this programme again in 2024.

**New last year** the Trust launched Career Opportunities Through Sailing (COTS), a sponsored scheme to train and develop youngsters from 11 years old to gain their qualification as Dinghy Instructors over a period of 4 years. Our first 2 candidates completed their 1st year within the 12 weeks of Junior Sailing at RDYC. In 2024 they will return for Year 2 and we will take in more youngsters into Year 1.

Also in 2024, we will be sponsoring fifteen teenagers aboard 'Prolific', owned by the Ocean Youth Trust. The 2023 voyage was very successful in building skills and relationships among those who took part. Our aim for these trips is to engage the participants in all aspects of sailing a large vessel and encourage interest in working in the marine industry.

We also hope to repeat last year's paddleboarding and kayaking sessions for over 100 Year 7 and 8 pupils from Dartmouth Academy.

All the above activities rely heavily upon the support of RDYC Volunteers, Junior Assistant Instructors, Safety Boat drivers and of course generous supporters and donors who help to fund them.

**We do need your support** please. Visit our web site for more information on how you can help this worthwhile cause or ask at the Club Office to contact one of our Trustees.

**Draft version of advertisemnt**

