

COURSE ADDENDUM 2021

Courses for Start Bay races are shown first, courses for the Long Day Races follow. Words in italics are advisory and do not constitute part of the Course Instructions.

Yachts should listen on VHF Ch M1 (37a) for course instructions, changes to SI and starting instructions.

1. Signalling the course: Listed Courses

The course may be displayed at the start by boards showing the Class(es), followed by course letter and number. More than one Class and course may be shown, and the course may be changed between successive starts. If no committee boat is present the course will be communicated by VHF Ch M1 (37a).

2. Alternative courses

An alternative course may be indicated at the Club or on the Committee Boat using boards indicating the individual marks to round in order. A red board indicates leave to port: a green board indicates leave to starboard.

3. Start and Finish Lines

Blackstone Point (BP) Prolongation of the line joining the two white flag staffs at Blackstone Point, with Castle Ledge Buoy as the Outer Distance Mark (ODM).

If a committee boat is present, it will be positioned as the inner distance mark and the line will be between the boat and Castle Ledge.

Committee Boat (CB) Between the main mast of the Committee Boat and the ODM, which is the nearest adjacent mark. When a mark forms part of the Start or Finish Line it is omitted as a rounding mark on that leg.

RDYC Club Line (CL) The transit of the RDYC Flagpole and outermost downriver pontoon pile. An orange tetrahedral or spherical ODM may be laid.

Dayboat River Series The Race Officer may specify other suitable start and finish lines.

4. Restrictions on Sailing Area

While racing, boats shall not pass between any of the following and the shore: Western Blackstone Rock, West Rock Buoy, Mew Stone Rocks, Combe Rocks, Dancing Beggars Rocks, Cod Rock (off Berry head) and Blackstone Rock (off Start Point).

West Rock Buoy (R) shall be passed to seaward EXCEPT when it is used as a rounding mark. When West Rock Buoy (R) is used in a course, boats should stay close to it when rounding as the West Rock is awash at low tide and lies about 200m NW of the buoy.

Boats must not impede the Higher or Lower Ferries or any other passenger ferries at any time.

5. Mark Rounding

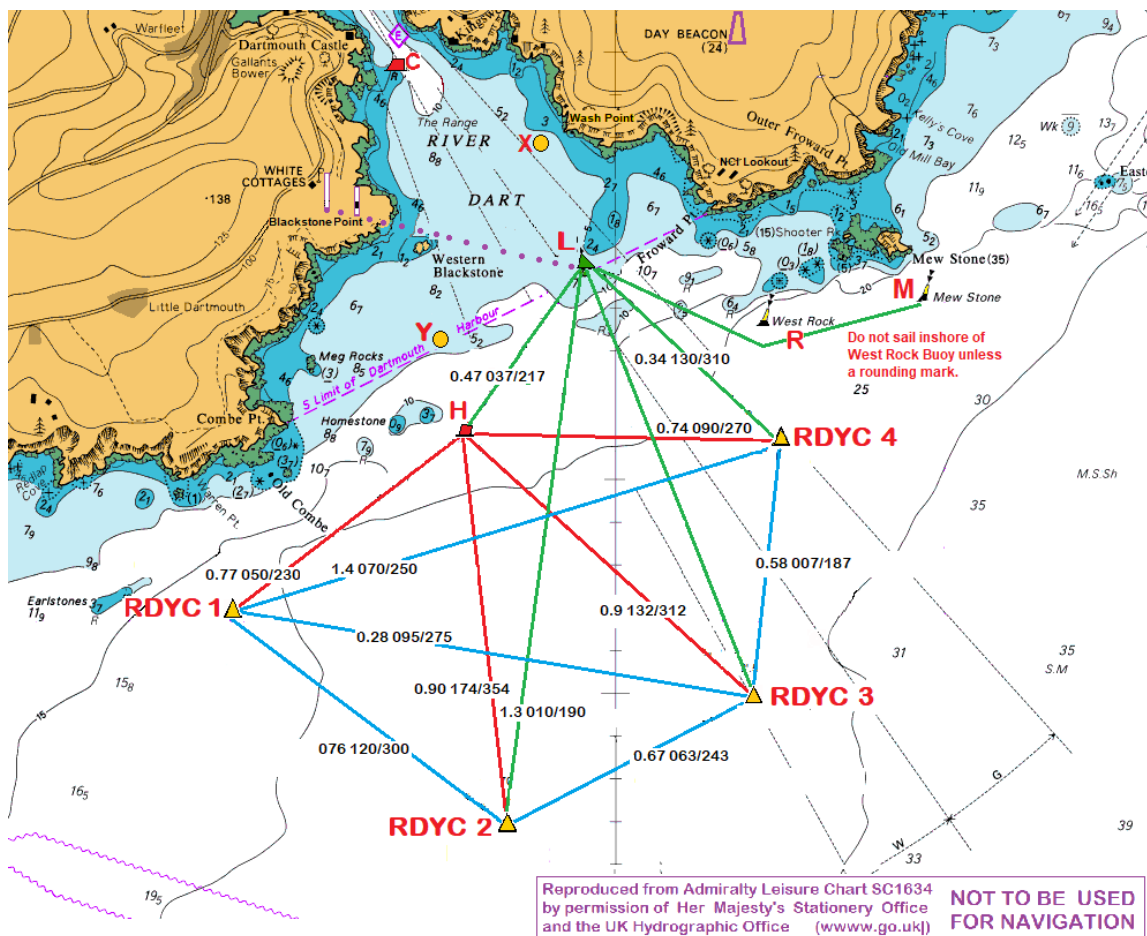
5.1 Direction of Rounding 's' means leave or round mark to starboard, 'p' to port.

5.2 All marks are rounding marks except H in courses A2 – A8 and B3.

6. Shorten Course

In Course Groups A-F the Shorten Course will finish at the mark shown in red with square brackets. However, if conditions require it a Committee Boat may take up station at any mark of the course flying a Shorten Course signal to finish.

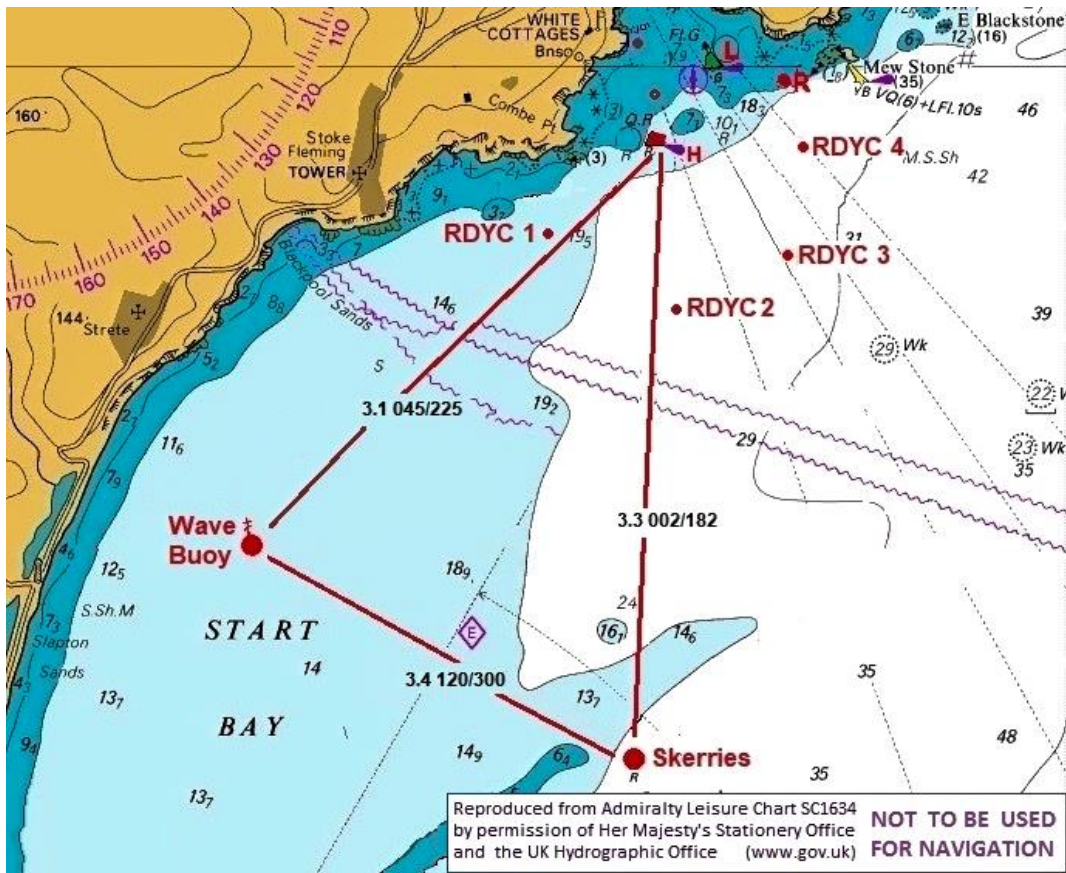
COURSE MAP (Inshore Buoys)



Marks and approximate positions (WGS84).

- | | | |
|------------|---|-------------------------|
| H | Homestone, red can buoy, | 50d 19.61'N, 3d 33.55'W |
| M | Mewstone Buoy, south cardinal buoy | 50d 19.92'N, 3d 31.89'W |
| R | West Rock Buoy, south cardinal buoy | 50d 19.86'N, 3d 32.47'W |
| | (an obstruction which must always be passed to seaward) | |
| ODM | Nearest mark to the CB (which may be H, L, C, T, Y, Z, 1, 2, 3, 4) | |
| L | Castle Ledge Buoy, green conical buoy | 50d 19.99'N, 3d 33.11'W |
| C | Checkstone, red can buoy | 50d 20.45'N, 3d 33.81'W |
| X | Yellow 6 knot buoy (Wash Point, N of Newf'nd Cove) | 50d 20.30'N, 3d 33.3'W |
| Y | Yellow 6 knot buoy (due N Homestone) | 50d 19.85'N, 3d 33.60'W |
| 1 | RDYC 1, yellow conical buoy with number | 50d 19.11'N 3d 34.49'W |
| 2 | RDYC 2, yellow conical buoy with number | 50d 18.7'N 3d 33.4'W |
| 3 | RDYC 3, yellow conical buoy with number | 50d 19.0'N 3d 32.5'W |
| 4 | RDYC 4, yellow conical buoy with number | 50d 19.6'N 3d 32.4'W |
| T | Temporary orange tetrahedral or lozenge buoy may also replace X or Y. | |
| T1 | Temporary orange tetrahedral or lozenge buoy near Kingswear Castle | |
| T2 | Temporary orange tetrahedral or lozenge buoy | laid upriver |

COURSE MAP (Offshore Buoys)



| | | |
|---|----------------------------|-------------------------|
| S | Skerries, red can buoy | 50d 16.3d'N, 3d 33.78'W |
| W | Wave Buoy (3m SW of Home)* | 50d 17.50'N, 3d 36.97'W |

****The wave buoy has a 2m triangular metal frame around the visible portion of the buoy and should be given adequate room.***



COURSES IN START BAY & RIVER DART

Course Group advice to Race Officers.

| Series | Class 1 | Class 2 & 3 | Combined Classes | Very Light wind only |
|------------------------|-------------------|------------------------|-------------------------|-----------------------------|
| <i>Wednesday Races</i> | <i>Group A</i> | <i>Group B</i> | - | <i>Group C</i> |
| <i>Saturday Races</i> | <i>Group D, E</i> | <i>Group E or F</i> | <i>Group D, E or F</i> | <i>Group F</i> |
| <i>Frostbite</i> | - | - | <i>Group E or F</i> | <i>Group F</i> |

A & B: Normal Inshore Courses with a committee boat.

A courses are longer courses for Class 1. B courses are shorter ones for Class 2 and Class 3.

The Shorten Course will finish at the mark shown in red and square brackets.

Shorten course length in brackets. Information in Italics is advisory only.

1. Wind South West

A1 Start at L 1p 2p **[Lp]** 1p finish at L 5.8 (3.3) NM

B1 Start at L 1p 2p **[Lp]** Hp finish at L 4.3 (3.3) NM

2. Wind South

A2 Start at L 2s 1s **[Hs]** Ls 2s finish at H 5.7 (3.0) NM

B2 Start at L 2s 1s **[Hs]** 2s finish at H 4.9 (3.0) NM

3. Wind South East

Start between 'T' and Committee Boat placed NW of Home to create a longer beat

A3 Start at T 3s 1s Ts **[Hs]** 3s finish at H 5.8 (3.7) NM

B3 Start at T 3s Ts **[Hs]** 3s finish at H 4.5 (2.7) NM

4. Wind East

Start between 'T' and Committee Boat placed W of Home to create a longer beat.

A4 Start at T 4s 3s Ts **[Hs]** 4s Ts finish at H 5.0 (3.0) NM

B4 Not used. All classes sail A4

5. Wind North East

A5 Start at H Ls 3s 1s **[Hs]** Ls 1s finish at H 6.2 (3.6) NM

B5 Start at H Ls 3s 1s **[Hs]** 1s finish at H 5.1 (3.6) NM

6. Wind North

'T' placed N of Home to give a short first windward leg.

A6 Start at H Tp 1p 2p **[Hp]** Tp 2p finish at H 5.5 (3.0) NM

B6 Start at H Tp 1p 2p **[Hp]** 2p finish at H 4.9 (3.0) NM

7. Wind North West

'T' placed NW of Home to give a short first windward leg.

A7 Start at H Tp 1p 3p **[Hp]** Tp 3p finish at H 5.7 (3.3) NM

B7 Start at H Tp 2p 3p **[Hp]** 3p finish at H 4.9 (3.0) NM

8. Wind West

'T' placed W of Home to create a longer beat. May be able to use 1 instead of 'T'.

A8 Start at 4 Tp 2p 4p **[Hp]** Tp 4p finish at H 5.8 (3.8) NM

B8 Start at 4 Hp 3p 4p **[Hp]** 4p finish at H 4.5 (3.0) NM

C: Short Inshore Courses with a Committee Boat, for very light winds

C courses must be used for all classes as start and finish lines may not be compatible with A and B courses.

| | | |
|---------------------------|--|--------------|
| 1. Wind South West | | |
| C1 | Start at H 1p 2p [Hp] 1p Finish at H | 4.2 (2.6) NM |
| 2. Wind South | | |
| C2 | Start at H 2s 1s [Hs] 2s Finish at H | 4.4 (2.6) NM |
| 3. Wind South East | | |
| C3 | Start at H 3p 4p [Hp] 3p Finish at H | 4.0 (2.2) NM |
| 4. Wind East | | |
| C4 | Start at H 4s 3s [Hs] 4s Finish at H | 3.7 (2.2) NM |
| 5. Wind North East | | |
| C5 | Start at H Ls 3s Hs [Ls] Hs Finish at L (can also Finish at [H]) | 4.0 (3.0) NM |
| 6. Wind North | | |
| C6 | Start at H Tp 2p [Hp] 2p Finish at H | 4.3 (2.4) NM |
| 7. Wind North West | | |
| C7 | Start at H Tp 3p [Hp] 3p Finish at H | 4.2 (2.4) NM |
| 8. Wind West | | |
| C8 | Start at 4 Hp 3p [4p] Hp Finish at 4 (can also Finish at H) | 3.7 (2.2) NM |

D: Longer Courses (with no committee boat)

D Courses are suitable for all classes in the Saturday Series in steady winds.

All races start and finish on BP line.

| | | |
|---------------------------|-----------------------------------|--------|
| 1. Wind South West | | |
| D1 | Start at BP Wp Sp Finish at BP | 9.7 NM |
| 2. Wind South | | |
| D2 | Start at BP Ss Ws Finish at BP | 9.7 NM |
| 3. Wind South East | | |
| D3 | Start at BP 3s 1p Sp Finish at BP | 9.2 NM |
| 4. Wind East | | |
| D4 | Start at BP Wp Sp Finish at BP | 9.7 NM |
| 5. Wind North East | | |
| D5 | Start at BP Ss Ws Finish at BP | 9.7 NM |
| 6. Wind North | | |
| D6 | Start at BP Wp Sp Finish at BP | 9.7 NM |
| 7. Wind North West | | |
| D7 | Start at BP Ss Ws 4p Finish at BP | 9.7 NM |
| 8. Wind West | | |
| D8 | Start at BP Ss Ws Finish at BP | 9.7 NM |

E & F: Inshore Courses with no committee boat

E courses are for all Classes in the Wednesday, Saturday and Frostbite series in steady winds.

F courses are for all Classes in the Wednesday, Saturday and Frostbite series in light winds.

All races start and finish on BP line.

When a Shorten Course has been broadcast (VHF Ch M1 (37a)), finish on the BP line as the boat approaches the mark in Red and Square Brackets which becomes the ODM and is left to Starboard.

1. Wind South West

E1 Start at BP 1p 2p [Lp] 1p Finish at BP 5.9 (3.4) NM

F1 Start at BP 1p 2p [Lp] Hs Finish at BP 4.3 (3.4) NM

2. Wind South

E2 Start at BP 2s 1s [Ls] 2s Finish at BP 6.0 (3.4) NM

F2 Start at BP 3s Hs [Ls] 3s Finish at BP 4.7 (2.4) NM

3. Wind South East

E3 Start at BP 1p 2p [Lp] Hp 3p Finish at BP 6.0 (3.8) NM

F3 Start at BP Hp 3p [Lp] Hp 3p Finish at BP 4.7 (2.5) NM

4. Wind East

E4 Start at BP 1p 3p [Lp] Hp 4p Finish at BP 5.4 (3.5) NM

F4 Start at BP Hp 4p Hp 4p [Lp] Hp 4p Finish at BP 4.9 (3.0) NM

5. Wind North East

E5 Start at BP 1p Hs 2p 4p [Lp] Hs Finish at BP 5.6 (4.6) NM

F5 Start at BP 2p 4p [Lp] Hs Finish at BP 4.0 (3.0) NM

6. Wind North

E6 Start at BP 2p [Ls] 4s 2s Finish at BP 5.7 (2.6) NM

F6 Start at BP 2p [Ls] 4s 3s Finish at BP 4.9 (2.6) NM

7. Wind North West

E7 Start at BP 2s 1s 3p [Ls] 4s Finish at BP 5.7 (4.5) NM

F7 Start at BP Hp 3p Hs 4p [Ls] 4s Finish at BP 4.9 (3.7) NM

8. Wind West

E8 Start at BP 3s 1s [Ls] 4s Hs Finish at BP 5.4 (3.6) NM

F8 Start at BP Hp 4s Hs [Ls] 4s Hs Finish at BP 4.2 (2.5) NM

R: River Courses

For use when there is either no wind, fog or heavy weather in the range.

Repeat the Lap until the Shorten Course Flag is flown.

River courses may be run from the RDYC Terrace or a Committee Boat.

T1 laid near Kingswear Castle, T2 upriver.

In sea breeze conditions, the best wind is found between the club and Dartmouth Castle.

It is strongly recommended to lay T1 on the inland side of Dartmouth Castle as the wind in the entrance is inconsistent.

Sea Breeze Course. T2 above CL but below lower Ferry

R1 Start on CL Lap (T1p T2p) Finish on CL.

Wind SE

NW Breeze. T2 above CL but below lower Ferry

R2 Start on CL Lap (T2p T1p) Finish on CL.

Wind NW

If there is breeze further up the river, then lay T2 close to Noss Marina

R3 Start CL T2p Finish CL

COURSES FOR COASTAL SERIES RACES

RDYC races in this series are open to RDYC members and members of local yacht clubs provided an RDYC entry form is completed.

RDYC members entering RTYC or BYC races in the series shall complete an entry form for the organising club of the relevant race.

Paragraph 4 (Restrictions on Sailing Area) of the Course Instructions (page 6) applies to all races.

| Date | Event | Organising Authority | TDDCS Qualifying Race | NOR / SI / Entry |
|--|-----------------------|----------------------|-----------------------|---|
| 9 May | Gallon of Rum | RDYC | Yes | https://royaldart.co.uk/sail/racing-1/racing-noticeboard Course information below |
| 19 June | Dart - Teignmouth | RDYC | | |
| 20 June | Teignmouth - Dart | RDYC | | |
| 10 July | Dart – Brixham - Dart | RDYC | | |
| 11 September | Dart - Yealm | RDYC | Yes | |
| 12 September | Yealm - Dart | RDYC | | |
| 18 April | Smugglers Run | RTYC | Yes | |
| 4 June | Night Race | RTYC | Yes | |
| 12 June | 2 Stones Race | BYC | | www.brixhamyachtclub.co.uk |
| 7 August | Brixham - Salcombe | BYC | Yes | |
| 8 August | Salcombe - Dart | BYC | | |
| Not Part of RDYC Coastal Series | | | | |
| 1 October | Exe Buoy Race | BYC | Yes | www.brixhamyachtclub.co.uk |

Gallon of Rum Race of Rum Race

Date Sunday 9 May 2021

Start Time 11:00. Warning Signal 10:55. Time Limit 6 hours).

Course **A:** Start at BP Homestone (p) Skerries (p) Orestone (p) Finish

B: Start at BP Homestone (p) Finish

C: as communicated by the Committee Boat.

Finish Line Between the Race Box on Battery Point and Brixham YC Red Finish Mark (Buoy with red flag

50 d 24'.424N 03 d 31'.33W) crossed from East to West.

Dart-Teignmouth/Teignmouth-Dart Races

Dart to Teignmouth Race

Date Sat 19 June 2021
Start Time 11:00. Warning Signal 10:55. Time Limit 6 hours.
Course Start at BP, Finish.
Finish Line Teignmouth Outfall Buoy (Yellow, 50d 31.76N 03d 27.07W) left to Starboard and bearing 090

Teignmouth to Dart Race

Date Sun 20 June 2021
Start Time 1030. Warning Signal 1025. Time Limit 6 hours
Course Start at Teignmouth Line, Teignmouth Buoy E (p), Finish at BP. Buoy E is yellow, marked TCYC and is close SW of the Start Line.
Start Line TCYC club line crossed North to South (Orange transit on TCYC yacht club

Dart-Brixham-Dart Race

Date Saturday 10 July 2021
Start Time 10:30. Warning Signal 10:25. Time Limit 8 hours.
Course Start at BP, H (s) 1(p) Brixham Mark 'E' (p), Homestone (s) Finish at BP.
Shorten Course In the event of calm weather, a shorter course may be specified.
Brixham Mark E 50d 25.00'N, 03d 30.20'W

Dart-Yealm/Yealm-Dart Races

Dart to Yealm

Date Saturday 11 September 2021
Start Time 10:00. Warning Signal 09:55. Time Limit 8 hours.
Course Start at BP, sail direct to Finish Line at Yealm, passing to seaward of Blackstone Rock (off Start Point).
Finish Line Prolongation of the line formed by two white poles adjacent to the hut on south side of river Yealm entrance at Mouthstone Point
Shorten Course Boats should time their transit by GPS of Longitude 3d 46.0' West. (on the East side of the entrance to Salcombe). In the event of no finishers this time may be used to determine the results

Yealm to Dart

Date Sunday 12 September 2021
Start Time 10:00. Warning Signal 09:55. Time Limit 8 hours.
Course Start at R Yealm sail direct to BP Finish Line at Dartmouth, passing to seaward of Blackstone Rock (off Start Point).
Start Line Prolongation of the line formed by two white poles adjacent to the hut on south side of river Yealm entrance at Mouthstone Point
Shorten Course Boats should time their transit by GPS of Longitude 3d 46.0' West. (on the East side of the entrance to Salcombe). In the event of no finishers this time may be used to determine the results